

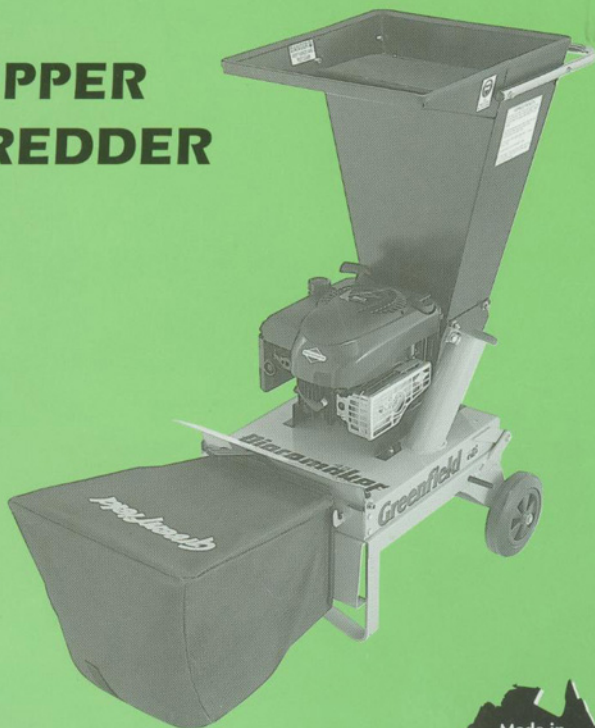
# Greenfield

"Excellence through Innovation"



The **Piecemaker** <sup>45</sup>™

**CHIPPER  
SHREDDER**



BRIGGS & STRATTON

Made in  
**AUSTRALIA**  
Since 1966

**OWNER'S MANUAL**  
INSTRUCTIONS AND SPARE PARTS

**Greenfield** Products Pty Ltd

172 Ingram Rd, Acacia Ridge, Qld. Australia 4110. Fax (07) 3344 1161. Phone: (07) 3345 6100  
Web Site: <http://www.greenfield.com.au> - Email: [greenfld@gil.com.au](mailto:greenfld@gil.com.au)

PIECEMAKER - CHIPPER SHREDDER

# CHIPPER - SHREDDER

Thank you for buying an Australian made Greenfield Shredder. Follow the manufacturers safety, operating and maintenance instructions and many years of excellent trouble free service can be expected.

## CONTENTS

<b>Safety Instructions</b>	<b>2</b>
<b>Operating Instructions</b>	<b>3</b>
<b>Maintenance</b>	
Fuel and Oil	5
<b>Maintenance</b>	
Cleaning and Storing	6
<b>Maintenance</b>	
Blades	6
<b>Spare Parts</b>	
Disc Assembly	8
<b>Spare Parts</b>	
Chassis	9
<b>To Clear a Blockage</b>	<b>10</b>
<b>For Best Results</b>	<b>11</b>



**Greenfield** Products Pty Ltd

All details are correct at time of printing but are subject to change without notice.

GF33551298

**Read these instructions carefully before using this GREENFIELD shredder. We remind you that a shredder is a cutting device, used incorrectly or without due respect it could cause personal injury.**

## SAFETY INSTRUCTIONS

- Do not allow any person unfamiliar with the safe operating procedure to operate the shredder.
- Do not allow children to operate the shredder.
- Do not place hands or any other body parts inside feeding chambers or discharge chute.
- Do not place your head over either feeding chamber or look in while shredder is running.
- Remove all bystanders and pets from the operating area, particularly children.
- Do not wear loose clothing or jewellery.
- Use protective eye wear and hearing protection. ( Safety Glasses are provided )
- Wear heavy gardening gloves and safety footwear.
- Stay clear of the discharge area when the shredder is operating.
- Keep the shredder in good working condition. Before every use check for loose nuts & bolts, missing parts and that guards and deflectors are fitted and functioning properly.
- Do not run the engine in a confined space where poisonous exhaust fumes, carbon monoxide can collect. Carbon monoxide is a colourless, odourless, deadly poisonous gas.
- Never place any garden tool or any object not required to be shred in either feed chamber. Damage to the shredder will occur and possible personal injury.
- Refuel outdoors only. Do not smoke while fuelling engine, or fuel near a source of ignition such as electrical switches or a gas hot water heater.
- Never remove the cap of the fuel tank or add petrol while the engine is running or if the engine is hot, allow it to cool. Remove fuel cap slowly to relieve any tank pressure.
- Do not overfill the fuel tank. If petrol is spilled do not attempt to start the engine but move the machine away from the area of the spill and wipe the machine dry with a rag. Do not attempt to start the machine till all petrol vapours have dissipated.
- Use only an approved container for storing fuel. Never store the fuel container or the fuelled machine in an unventilated area or near a source of ignition such as electrical switches or a gas hot water heater.
- Replace any unreadable warning or safety decals.
- The operator of this shredder should be in good physical and mental health and not under the influence of any drug or alcohol which might impair vision, co-ordination or judgement.
- Do not transport the machine while the engine is running.
- Do not lend or sell this shredder without the safety and operating instructions.
- **! Warning** - The blades on your Greenfield shredder are very sharp and could cause lacerations if not handled with utmost care.
- **! Warning** - Remove the spark plug lead to avoid accidental starting and allow moving parts to come to a complete stop before attempting any maintenance or inspection of the shredder.

# OPERATION

- Operate the shredder on stable, level ground other than paved or gravel surfaces.

## TO START:

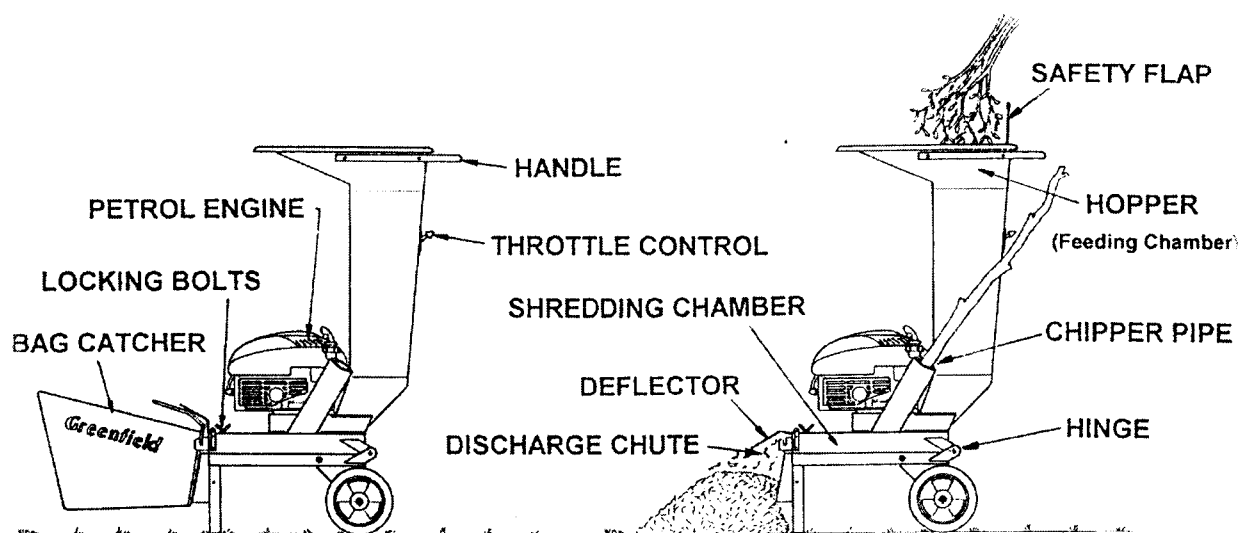
- Before starting, remove the spark plug lead to prevent accidental starting then inspect that all fasteners are secure and safety guards are operating correctly. Also check the cutting blades are secure and in good condition.
- Check the oil level. Refer "ENGINE OIL" in this book.
- Before starting make sure that both feeding chambers are empty.
- Operate the shredder only in good daylight and on good level ground.
- Your Greenfield Shredder is powered by a Briggs & Stratton engine fitted with a fuel primer for starting. Replace spark plug lead.  
Set throttle control to the fast position. Push primer bulb 3 times firmly before starting.  
When started move the throttle control to a fast idle position for 1 minute to warm the engine.  
Set the throttle control to the "F" fast position to operate.
- If the shredder vibrates or makes any uncommon noises, stop the engine immediately. Disconnect the spark plug lead and wait for all the moving parts to come to a complete stop before inspecting the machine. Do not touch the engine when it is running or when surfaces are still hot from operating. Refer to "TO CLEAR A BLOCKAGE" in this book.
- Do not attempt any repair to the shredder unless you have the correct tools and are competent to repair machinery of this nature.

## TO OPERATE:

- Never stand on the discharge side of the machine when operating and keep your face and body away from the entries to the feeding chambers.
- Do not allow processed material to accumulate at the discharge chute. The shredder will cease to process material and possibly stall because of congestion in the shredder chamber.
- This situation will occur more often when using the catcher. An extra large palm frond would provide more mulch than the catcher can hold. Refer "FOR BEST RESULTS" in this book.
- Stop the engine before removing or attaching the catcher.
- If the shredder does become clogged, switch off the engine and wait for all moving parts to stop, then remove the spark plug lead to prevent accidental starting before attempting to clear the blockage. Use a wooden stick only to clear blockage, not hands or fingers. The blades on this shredder are very sharp and personal injury could occur if any body part came in contact with the blades. Before restarting ensure both feeding chambers are empty.

## OPERATION CONTINUED ...

- For the proper clearing procedure refer to the "TO CLEAR A BLOCKAGE" section in this book.
- Ensure there is no foreign matter in the material to be shred. Remove any stones, glass, metal, brick or any other material foreign to garden mulch. Failure to do so could result in damage to the shredder and possible personal injury.
- Never place any garden tool or any object not required to be shred in either feed chamber. Damage to the shredder will occur and possible personal injury.



## TO STOP:

- Before switching off ensure the shredding chamber has completely cleared and there is no material left in either feed chamber.
- Shift the throttle control to a fast idle position for 20 seconds to cool the engine.
- Shift the throttle control to "S" to stop the engine.
- Refer "CLEANING & STORAGE" in this book.

# MAINTENANCE

**! WARNING** - Remove the spark plug lead to prevent accidental starting before attempting any maintenance or inspection of the machine.

## FUEL

Before starting top with clean regular unleaded petrol only. Don't overfill. Make sure the petrol is free from impurities, particularly water.

If the machine is not to be used for an extended period, turn fuel tap off and run the engine till it stops from lack of fuel.

Refer engine manufacturers booklet.

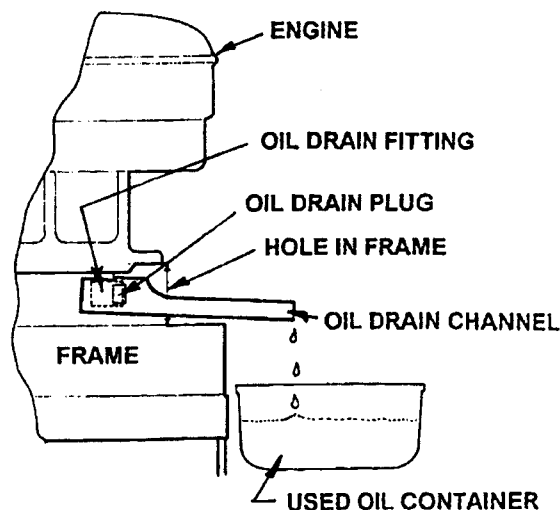
## ENGINE OIL

Check engine oil by positioning machine on level ground. Remove the dipstick and wipe clean. Replace the dipstick screwing correctly into position. Remove again and sight the oil level. Fill to the full mark, do not overfill. The dipstick must be firmly in place when the engine is running.

Change engine oil after the first 5 hours of operation then every 6 months or 25 working hours whichever comes first. Change more often in dusty conditions. Drain engine oil whilst engine is warm then replace with a high quality detergent oil classified for service SF, SG such as Briggs & Stratton warranty certified SAE 30 oil available from Briggs & Stratton service dealers.

To drain the oil - Plug the drain channel provided onto the extended oil drain fitting then remove the drain plug using a standard 3/8" square drive socket extension piece. Catch the oil in a suitable container and dispose of in a proper manner. Do not tilt the machine over, the engine oil will drain properly when the engine is level. See illustration.

Refer engine manufacturers booklet.



## AIR FILTER

Inspect regularly. Replace if dirty or damaged. Never operate the shredder without the filter fitted or with the filter incorrectly fitted.

Refer engine manufacturers booklet.

## CLEANING

Never wash your Greenfield shredder with a high pressure hose. Water and dirt could be forced past the seals in the bearings causing premature failure.

Use a brush to remove any build up of debris then wipe with a cloth. Do not hose engine. Clear grass from the finger guard on top of the engine, the engine head fins and around the muffler. Clean the catcher bag by hosing. For further engine cleaning instructions refer to the engine manufacturers booklet.

## STORING

Before storing clean the machine and check for any loose or missing parts. Check if the blades are in good condition for the next use.

Inspect feeding chambers and discharge chute, removing any debris. Make sure all the material fed into the machine has completely passed through before shutting it off.

Store in a well ventilated area protected from dampness and the weather.

Do not store the shredder near any source of ignition such as electrical switches or gas hot water heaters.

Store out of reach of children.

Remove the spark plug lead to prevent accidental starting.

For extended storing periods, run the fuel out of the carburettor. See the "FUEL" section in this book and the engine manufacturers book.

## BLADES

**! WARNING** - The blades on your Greenfield shredder are very sharp and could cause lacerations if not handled with utmost care.

The blades on your Greenfield shredder have two cutting edges for twice the life. When the first edge of both blades becomes worn they can be turned over and used again before needing sharpening or replacement.

When blades do require sharpening return them to your local dealer who will arrange a regrind. Do not attempt to sharpen blades without the proper equipment needed to grind blades in pairs to retain correct balance.

When removing blades to turn over be very careful as the unused edge is very sharp which could cause personal injury. Remove any build up of mulched material on the blade before turning it over and re-bolting it to the disc.

## TO REMOVE AND REPLACE BLADES

- 1 Disconnect the spark plug lead to prevent accidental starting.
- 2 Open the shredding chamber by unscrewing both locking bolts then with a foot on a stirrup peg hinge the complete top of the shredder backwards and rest the handle bars on something stable, approximately half a metre high. If the fuel tank is not completely full the handle bars can be rested on the ground. See illustration.

- 3 With the spark plug lead disconnected rotate the disc to bring a blade to the top, discharge chute area. The blade securing bolts are easier to remove if the disc is first restrained from rotating by inserting a piece of timber through the blade hole at the bottom of the disc and into the hopper base hole.

To remove or replace the blades it is not necessary to touch the five bolts in the centre pattern which secures the disc to the disc boss and the crankshaft or the four bolts securing the labyrinth blades.

Use a 13mm or 1/2 AF spanner or socket to remove the three (3) blade retaining bolts from the top blade only.

**! WARNING** - The unused edge of the blade will be very sharp and could cause lacerations if not handled carefully.

If the blade is to be turned over, remove any build up of mulched material on the blade with a wire brush or scraper before bolting that face down. Failure to do so could cause the blade to come loose at a later time. The used spring washers should be replaced with new spring washers, GT3334, every time the blade is removed. Tighten the M8 x 16 high tensile bolts to 22Nm (16ft.lbs.). To change the second blade, repeat step No. 3 of these instructions.

Always replace blades in pairs to preserve balance. When replacing blades always use GENUINE GREENFIELD spare parts.

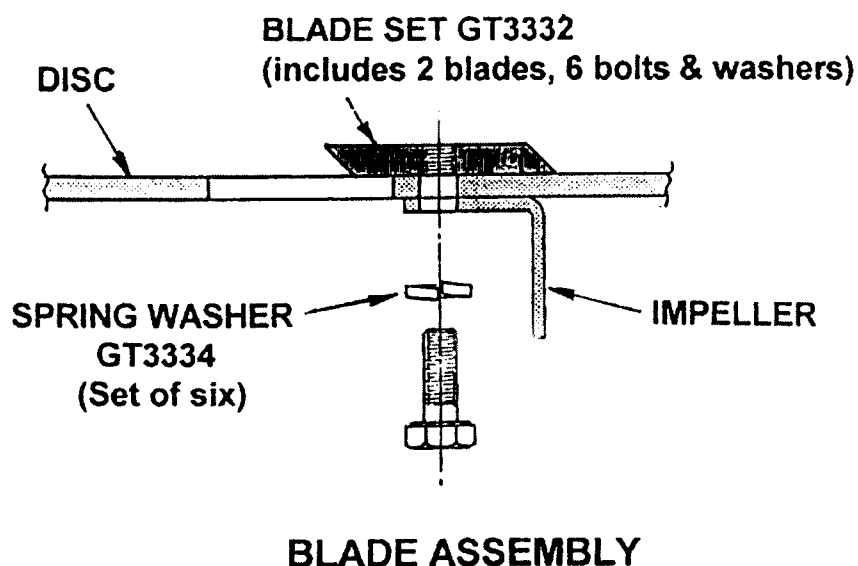
**! WARNING** - Use of inferior non-genuine service parts on your Greenfield Shredder could result in costly damage and even personal injury. Insist on GENUINE parts branded Greenfield or Briggs & Stratton.

Do not attempt any maintenance or repairs to this shredder unless you have the correct tools and are competent to work on machinery of this nature.

**Your part numbers are:-**

Blade, Bolt & Washer Set	- GT3332
Washer Set	- GT3334

Upon restarting, if the shredder vibrates or makes any uncommon sounds, stop the engine immediately and return the complete machine to your local Greenfield agent.

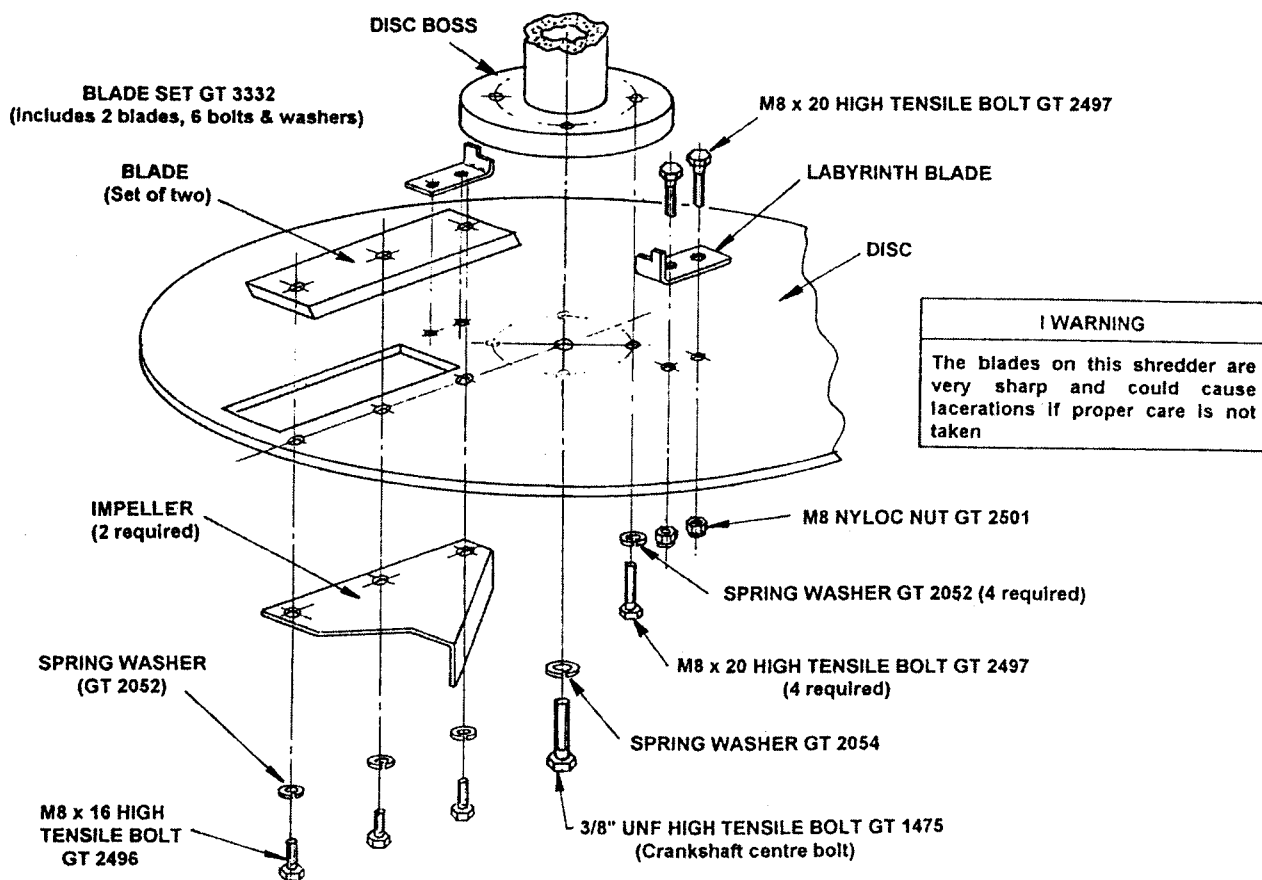




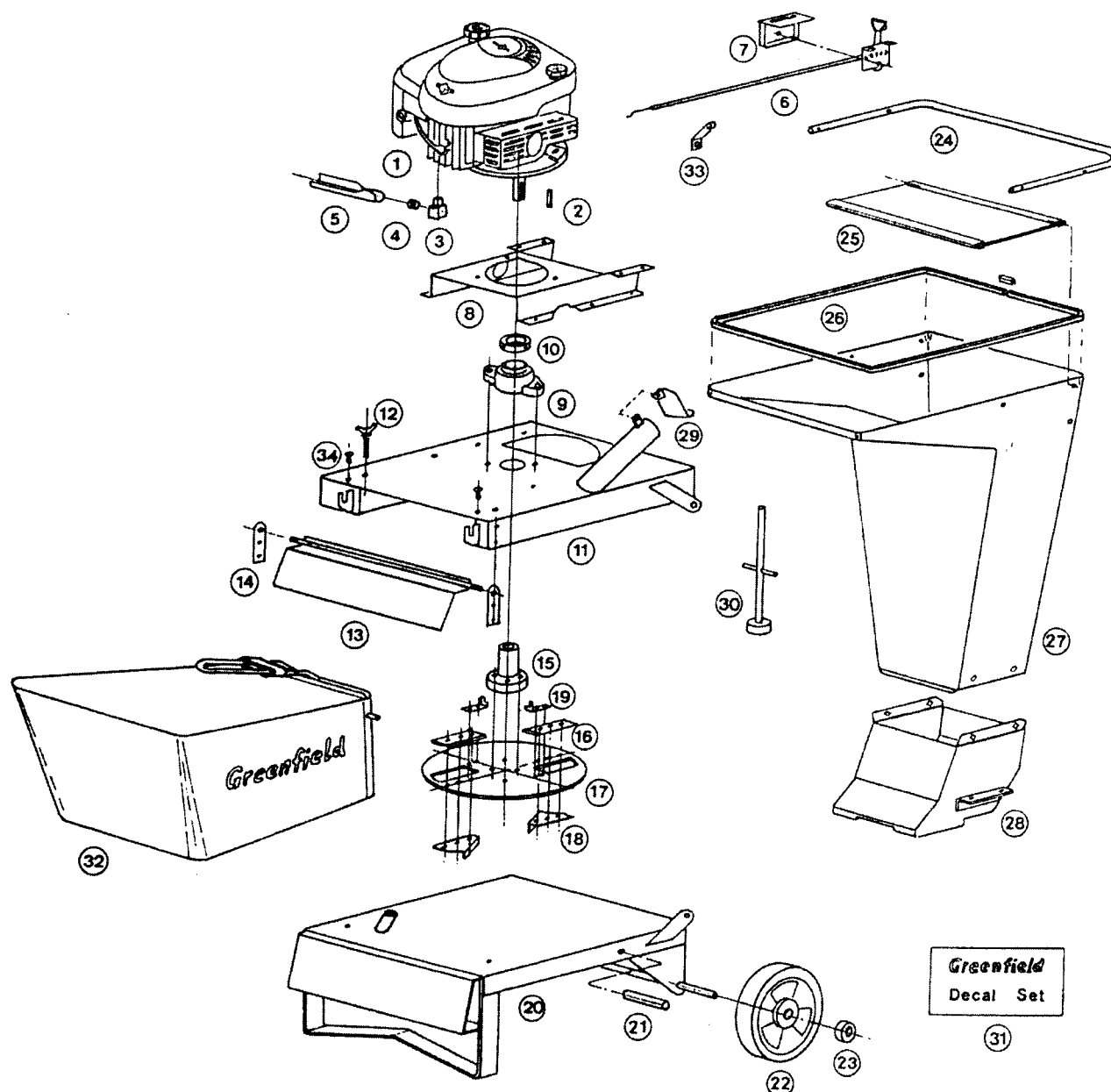
## THE DISC

Should it be necessary to remove the disc, new spring washers, should be used when refitting. The 3/8" High Tensile centre bolt should be tensioned to 58 Nm (43 ft.lbs.) and the four (4) M8 x 20 High Tensile bolts into the disc boss should be tensioned to 22 Nm (16 ft.lbs.). See illustration "DISC ASSEMBLY".

The disc boss is keyed to the crankshaft internally and is captured in a self aligning cam lock bearing externally. There is a number of operations to be performed in the correct order for both removal and replacement of the engine, the bearing or the boss and should only be done by a person experienced and qualified with the correct tools to do so.



**DISC ASSEMBLY**



## SPARE PARTS

INDEX	PART NO.	DESCRIPTION	INDEX	PART NO.	DESCRIPTION
1	GD 5796	4 Cycle Petrol Engine	18	GT 3273	Impeller (2 required)
2	GT 3291	key	19	GT 3404	Labyrinth Blade (2 required)
3	GT 2258	Oil Drain Fitting	20	GT 3274	Base Assembly
4	B&S 691680	Oil Drain Plug	21	GT 3322	Peg (2 required)
5	GT 3293	Oil Drain Channel	22	GT 2255	Wheel (2 required)
6	CT 1774	Throttle Control	23	GT 7009	Collar (2 required)
7	GT 3294	Cover Throttle Control	24	GT 3289	Handle
8	GT 3287	Engine Mount	25	GT 3323	Rubber Safety Flap
9	GT 2260	Bearing Unit	26	GT 3284	Rubber Edging
10		Bearing Cam Lock Collar	27	GT 3339	Hopper
11	GT 3315	Drive Head Assy	28	GT 3327	Hopper Base
12	GT 3316	Locking Bolt (2 required)	29	GT 3364	Metal Safety Flap
13	Gt 3317	Deflector	30	GT 3328	Feed Ram
14	GT 3318	Bracket (2 required)	31	GT 3329	Decal Set
15	GT 3271	Disc Boss	32	GD 5811	Bag Catcher
16	GT 3269	Blade (2 required)	33	GT 3393	Bracket
17	GT 3270	Disc	34	GT 1760	Nylon Button

Parts and specifications subject to change without notice. Standard hardware items are not shown.

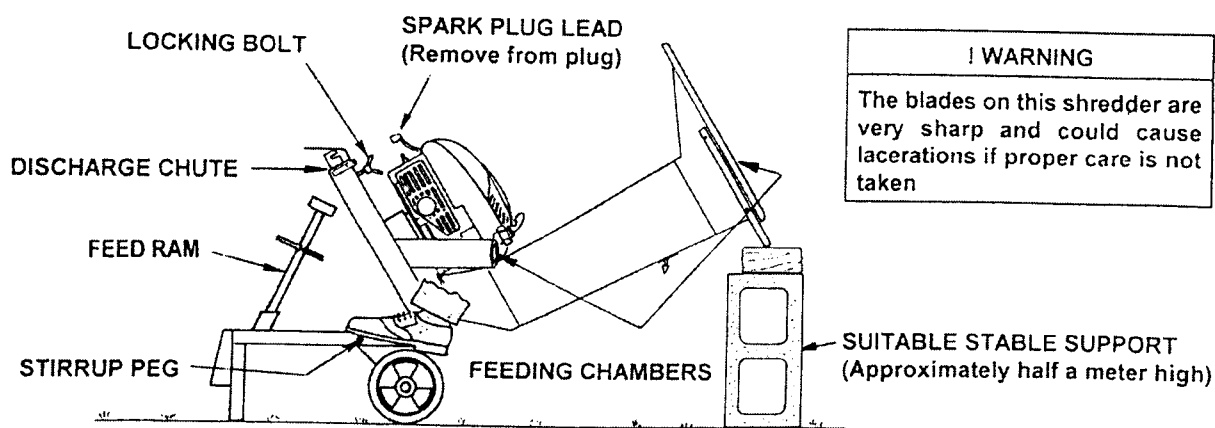
## TO CLEAR A BLOCKAGE

If material fails to clear the shredding chamber or the machine is under abnormal labour or making uncommon noises or vibrating -

- 1 Stop the engine and wait for all moving parts to come to a complete stop.
- 2 **!WARNING** - Remove the spark plug lead to prevent accidental starting.
- 3 Open the shredding chamber by unscrewing both locking bolts then, with a foot on a stirrup peg, hinge the complete top of the shredder backwards and rest the handle bars on something sturdy approximately 1/2 metre high. If the fuel tank is not completely full the handle bars can be rested on the ground. Before attempting any maintenance or inspection of the shredder use the feed ram as a safety prop by inserting it into the tube on the base to prevent accidental closure of the chamber. See illustration
- 4 Check the build up of foreign material attached to the disk in the shredding chamber. Use only a wooden stick to remove material after a blockage, not hands or fingers.

**!WARNING** - The blades on the shredder are very sharp and could cause lacerations if proper care is not shown.

- 5 Remove all material out of both feed chambers before attempting to restart.
- 6 Close the shredding chamber and screw in both locking bolts and replace the spark plug lead.
- 7 Restart the engine. If the shredder still vibrates or makes any uncommon sound, stop the engine immediately and return the complete machine to your local dealer.



# FOR BEST RESULTS

- Garden prunings shred better when they are green. Dry material takes longer to process and causes excessive blade wear.
- Combine excessively green material with drier prunings and conversely dried prunings with green ones.
- Feed material in at a steady rate to maintain maximum engine speed. If engine slows, restrict feeding till maximum engine speed returns. If the engine continues to labour, stop the engine and refer to "TO CLEAR A BLOCKAGE" in this book.
- Prunings shred better when fed in leafy end first.
- Vines need to be combined with branches or prunings in the hopper or preferably fed through the chipper.
- Your GREENFIELD shredder comes with a fabric catcher which is interchangeable with that of a GREENFIELD domestic mower. Empty the catcher just as you would your mower catcher. Don't allow it to overfill as this hinders the machines performance. Always stop the shredder to empty or replace the catcher.
- An extra large palm frond can produce more shredded mulch than the catcher can hold. Also when a large quantity of material is to be processed it may be more practical to remove the catcher and direct the mulch onto the ground or directly into the garden. Do not allow mulch to build up in the discharge area.
- Your GREENFIELD shredder will process green branches up to 20mm in the hopper and larger branches in the 70mm diameter chipper pipe.
- Due to time absorbing preparation, slow processing and excessive blade wear, materials such as larger sections of old dried timber and the base section of palm fronds are best disposed of in another manner.
- Keep the blades sharp and the machine in top operating condition.
- Ensure there is no foreign matter in the material to be shred. Remove any stones, glass, metal, brick or any other material foreign to garden mulch. Failure to do so could result in damage to the shredder and possible personal injury.
- Your GREENFIELD shredder comes with a wooden feed ram to assist the passage of branches through the chipper pipe.

It is not intended for use in the hopper. If material doesn't feed easily through the hopper we suggest reducing size of prunings and or the quantity till a sustainable feed rate is developed.

Never place any garden tool or any object not required to be shred in either feed chamber. Damage to the shredder will occur and possible personal injury.

- Read and understand the safety, operating and maintenance sections of this book.

## GUARANTEE

Greenfield Mowers Pty Ltd, the manufacturer, guarantee their product to be free of faulty workmanship and material only. This period is 12 months for domestic use. The Piecemaker Chipper Shredder is built solely for domestic use. Machines hired out are not covered by the manufacturers guarantee. The manufacturer cannot accept any claim for damage that may occur due to irresponsible use or abuse by the hirers. Engines and batteries used on Greenfield equipment carry the respective manufacturers warranty.

This guarantee will not apply to:

- Fair wear and tear, Blades and Blade Bolts, Blade Holder, and damage caused by misuse, neglect and accidents.
- Repairs rendered necessary or arising from use of other than genuine Greenfield parts, or the relevant genuine engine manufacturers parts.
- Any work performed by other than an authorised Greenfield Dealer, or damages arising from parts that have been dismantled, modified or incorrectly fitted.

Products and parts considered faulty should be returned intact to the authorised Greenfield dealer, or direct to Greenfield with all necessary information, freight paid for inspection. In all warranty claims the manufacturers decision is final and binding.

The benefits conferred by the above guarantee are in addition to all other rights and remedies in respect of the product which the consumer has under existing laws in Australia and New Zealand.

Greenfield Mowers Pty Ltd, the manufacturer reserves the right to change parts and specifications without notice.

### Guarantee Registration Details

Owner \_\_\_\_\_

Address \_\_\_\_\_

\_\_\_\_\_  
Postcode \_\_\_\_\_

Purchase Date \_\_\_\_ / \_\_\_\_ / \_\_\_\_ Model \_\_\_\_\_

Chassis No. \_\_\_\_\_ Engine No. \_\_\_\_\_

Dealer Name \_\_\_\_\_

Dealer Signature \_\_\_\_\_

Please complete this record which should be held by the purchaser and presented should service under guarantee be required. To register your guarantee please complete the enclosed guarantee card and return to Greenfield Mowers

**Greenfield**  
**Mowers Pty Ltd**

172 Ingram Road, Acacia Ridge, QLD 4110

PO Box 155 Archerfield QLD 4108

Fax: (07) 3344 1161. Tel: (07) 3345 6100

Web Site: <http://www.greenfield.com.au> Email: [greenfld@gil.com.au](mailto:greenfld@gil.com.au)