

# SP117 GREENFIELD

FARM and GARDEN TRACTOR  
SPARE PARTS and INSTRUCTIONS

## MINI TRACTOR

8HP BRIGGS and STRATTON — 5HP BRIGGS and STRATTON  
VICTA INDUSTRIAL 2STROKE ENGINES



MANUFACTURED BY  
GREENFIELD PRODUCTS PTY. LTD.  
212 BEATTY ROAD  
ARCHERFIELD, BRISBANE,  
AUSTRALIA, Q.4108.

TELEPHONE 46 1711

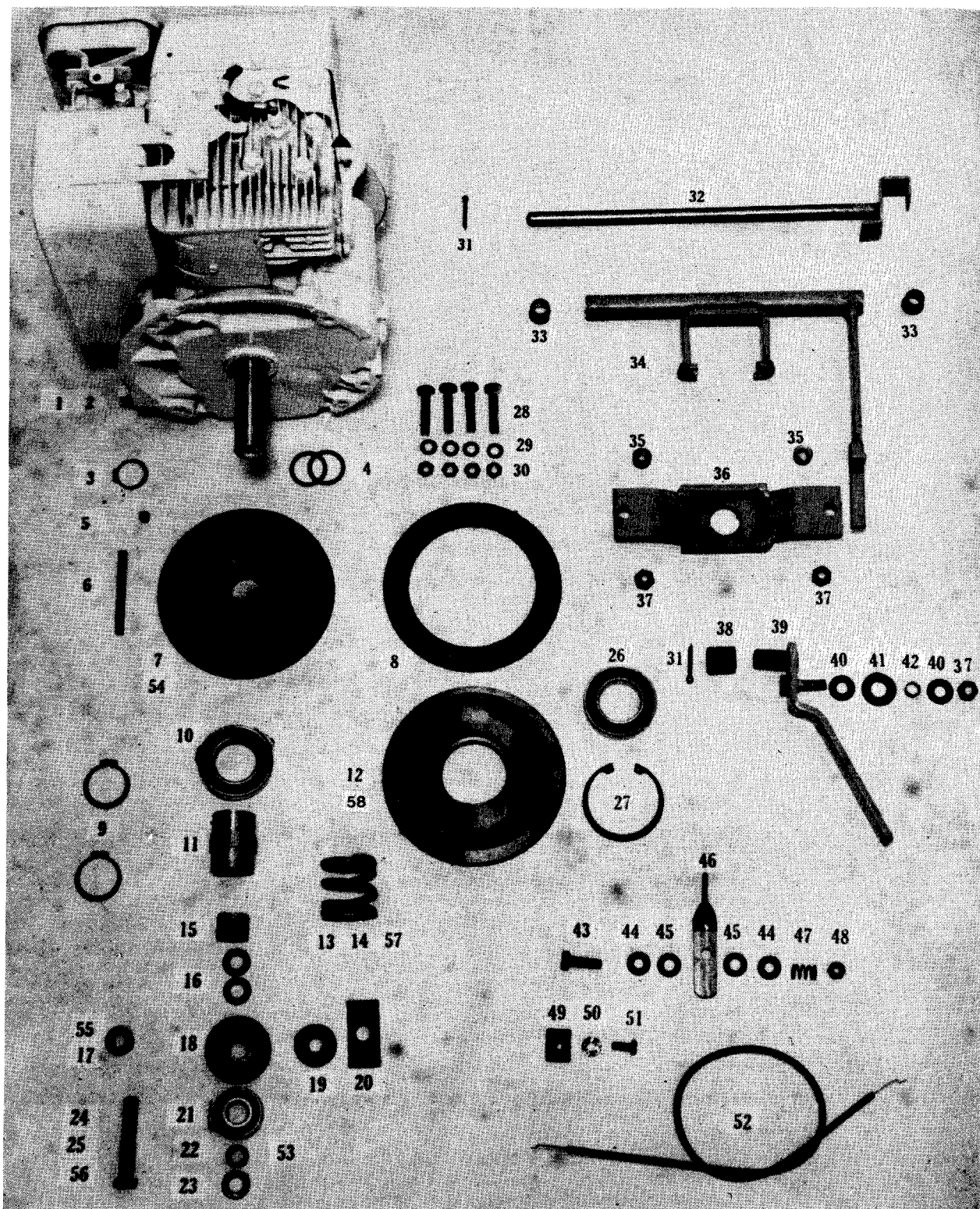
# MINI TRACTOR

**8HP BRIGGS and STRATTON — 5HP BRIGGS and STRATTON  
VICTA INDUSTRIAL 2STROKE ENGINES**

## INDEX

MOTOR & CLUTCH	PAGE 3
ENGINE & CLUTCH	5
CHASSIS PARTS	7
FRONT AXLE ASSEMBLY	9
REAR AXLE	11
REAR DRIVE	13
HEIGHT ADJUSTMENT & IDLER PULLEYS	15
CUTTER HOUSING & BLADES	17
COVERS, SEAT, STEERING WHEEL AND DECALS	19
INSTRUCTIONS ON OPERATION	20
HINTS TO HELP YOU	21
GUARANTEE	22

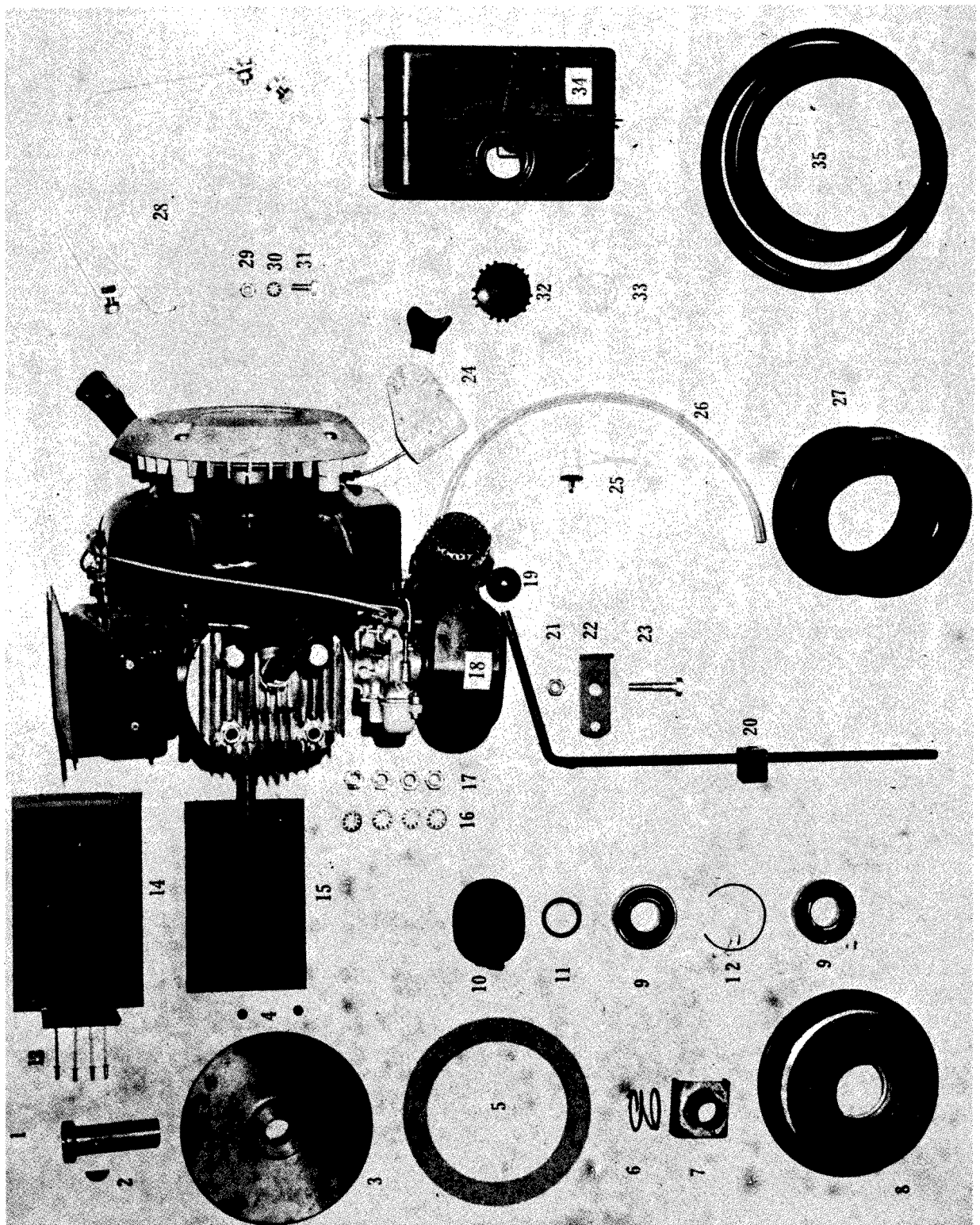
# ILLUSTRATION 1





INDEX	PART NO.	DESCRIPTION
1	GT 797	8HP 191702 Briggs & Stratton Engine
2	GT 798	5HP 130902 Briggs & Stratton Engine
3	GT 860	Circlip 1" ex 5HP B & S Only
4	GT 1045	Spacers 8HP B & S Only
5	GT 538	Grub Screw ¼ x 5/16 SAE Socket Head
6	GT 583	Key Crank Shaft to Clutch Plate
7	GT 850	Clutch Plate and Pulley 5 & 8HP B & S
8	GT 552	Clutch Lining
9	GT 856	Circlip-Bearing Retainer
10	GT 936	Bearing 6007 2RS and Clip
11	GT 852	Key Sleeve
12	GT 851	Clutch Pulley Bore
13	GT 366	Spring-Clutch Tension 8HP B & S Only
14	GT 368	Spring-Clutch Tension 5HP B & S Only
15	GT 853	Crankshaft Extension 5 & 8HP B & S
16	GT 1039	Washers - Spacer 5 & 8 B & S
17	GT 666	Bush - Spacer 8HP B & S Only Replaced by GT 674
18	GT 665	Retainer - Clutch Spring
19	GT 686	Spacer )
20	GT 843	Retainer - Clutch Spring ) Replaced by GT 665
21	GT 934	Bearing & Clip Clutch Thrust
22	GT 682	Spacer Clutch Thrust Bearing 8HP B & S Only Replaced by GT 674
23	GT 1039	Washer
24	GT 1038	Bolt - Clutch Retaining 8HP B & S Only
25	GT 1037	Bolt - Clutch Retaining 5HP B & S Only
26	GT 855	Bearing - 6007 2RS Clutch Pulley
27	GT 857	Circlip - Bearing Retainer
28	GT 1029	Bolt - Engine Holding 1½ x 5/16 W
29	GT 85	Washer - Shakeproof 5/16"
30	GT 73	Nut 5/16"
31	GT 164	Split Pin
32	GT 845	Rod - Clutch Fork Pivot
33	GT 529	Bush - Clutch Fork Pivot Tube
34	GT 844	Clutch Fork
35	GT 683	Sleeve Nut - Round
36	GT 680	Plate - Bearing Support
37	GT 4	Nut 3/8W Nyloc
38	GT 530	Bush
39	GT 846	Clutch Engaging Lever
40	GT 1012	Washer 7/8 x 3/8
41	GT 581	Washer - Tension
42	GT 260	Bush - Pivot
43	GT 72	Bolt 1" x 5/16" W
44	GT 1035	Washer ¾ x 5/16 Steel
45	GT 1046	Washer ¾ x 5/16 Fibre
46	GT 847	Throttle Control Lever
47	GT 354	Spring - Tension
48	GT 1020	Nut - 5/16" Nyloc
49	GT 848	Plate - Throttle Cable Clamp
50	GT 1022	Washer - ¼ Steel
51	GT 102	Bolt 5/8 x ¼ W
52	GT 586	Throttle Cable
53	GT 684	Sleeve - Clutch Thrust Bearing 5HP B & S Only Replaced by GT 675
54	GT 854	Plate & Pulley VICTA 2 Stroke Only
55	GT 667	Bush - Spacer 5HP B & S Only use GT 675
56	GT 1043	Bolt - Clutch Retaining Victa 2 Stroke Only
57	GT 365	Spring - Clutch Tension Victa 2 Stroke Only
58	GT 935	Clutch Pulley with Lining

# ILLUSTRATION 2



## ILLUSTRATION NO. 2

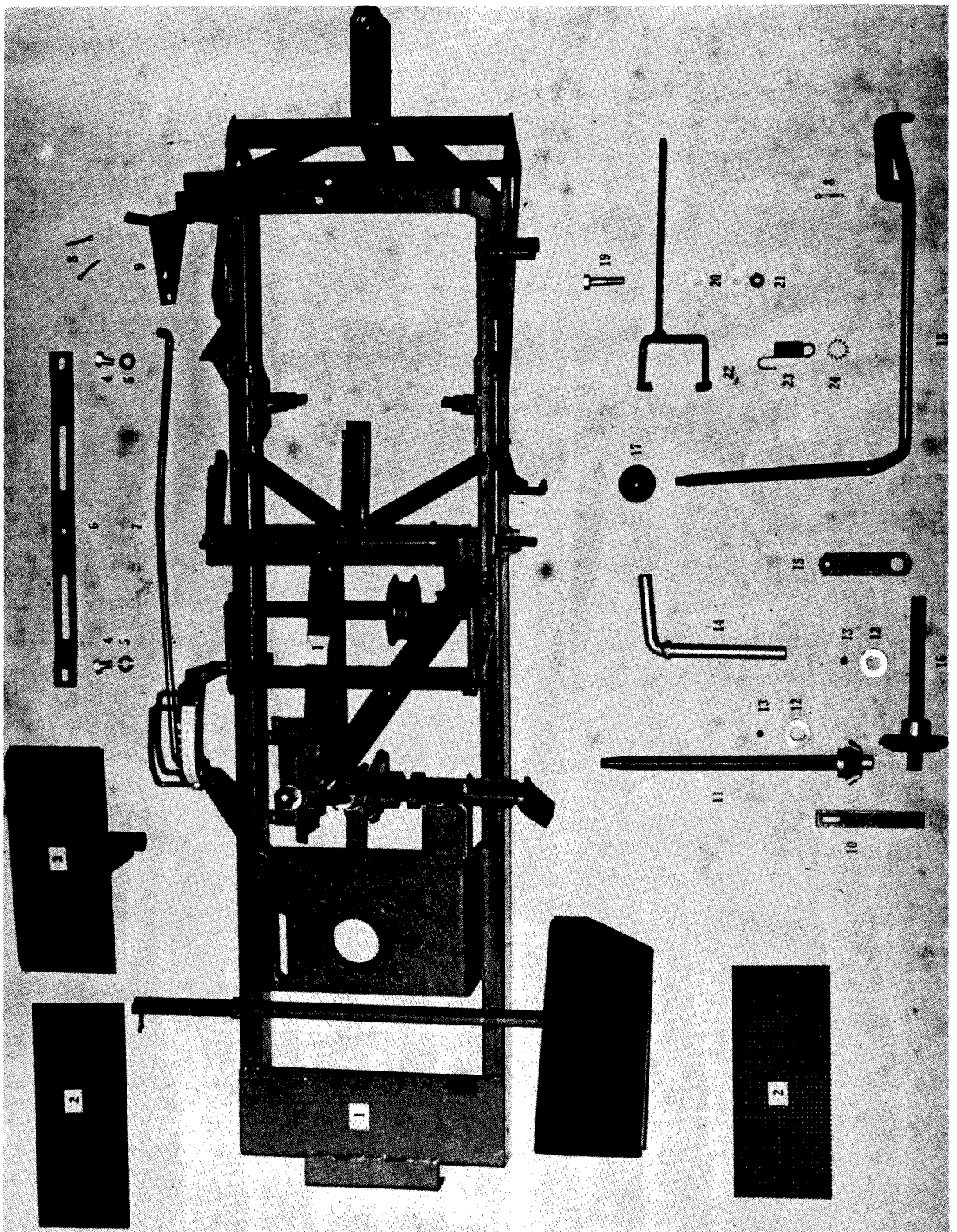
## MINI

## ENGINE &amp; CLUTCH

INDEX	PART NO	DESCRIPTION
1	GT 804	Crankshaft Adaptor
2	GT 518	Key No.6
3	GT 819	Clutch Plate & Pulley
4	GT 519	Grub Screw 5/16 x 5/16 SAE
5	GT 552	Clutch Lining
6	GT 357	Spring Clutch Release
7	GT 902	Key Sleeve
8	GT 403	Front Clutch Pulley Only
9	GT 394	Bearing Front Clutch
10	GT 904	Clutch Button
11	GT 546	Spacer Fibre
12	GT 45	Circlip Bearing Spacer
13	GT 576	Pop Rivets
14	GT 878	Muffler Shield
15	GT 838	Heat Insulator
16	GT 37	Shakeproof Washer 3/8
17	GT 36	Nut 3/8 W
18	Victa 160/ Code 102	Engine — Victa Industrial
19	GT 524	Knob 1 1/8 x 5/16 W
20	GT 929	Clutch Engaging Rod and Cam Block
21	GT 1020	Nut 5/16W Nyloc
22	GT 880	<b>Clutch Rod Holding Bracket</b>
23	GT 1029	Bolt 1½ x 5/16 W
24	Victa 4E—	Throttle Cable & Control
25	Victa 25/269	Fuel Tap
26	Victa 25/291	Fuel Line
27	GT 370	V Belt Blade Drive
28	Victa 1/1242	Tank Straps
29	GT 17	Nut ¼ W
30	GT 1026	Shakeproof Washer ¼
31	GT 102	Bolt 5/8 x ¼ W
32	Victa 1/064	Fuel Cap
33	Victa 25/178	Cap Seal
34	Victa 1/1247	Fuel Tank
35	GT 371	V Belt Rear Drive

Note: Modified Cutter Engaging Clutch introduced 23.9.73 from Frame Serial No. 3510257

# ILLUSTRATION 3



## ILLUSTRATION NO. 3

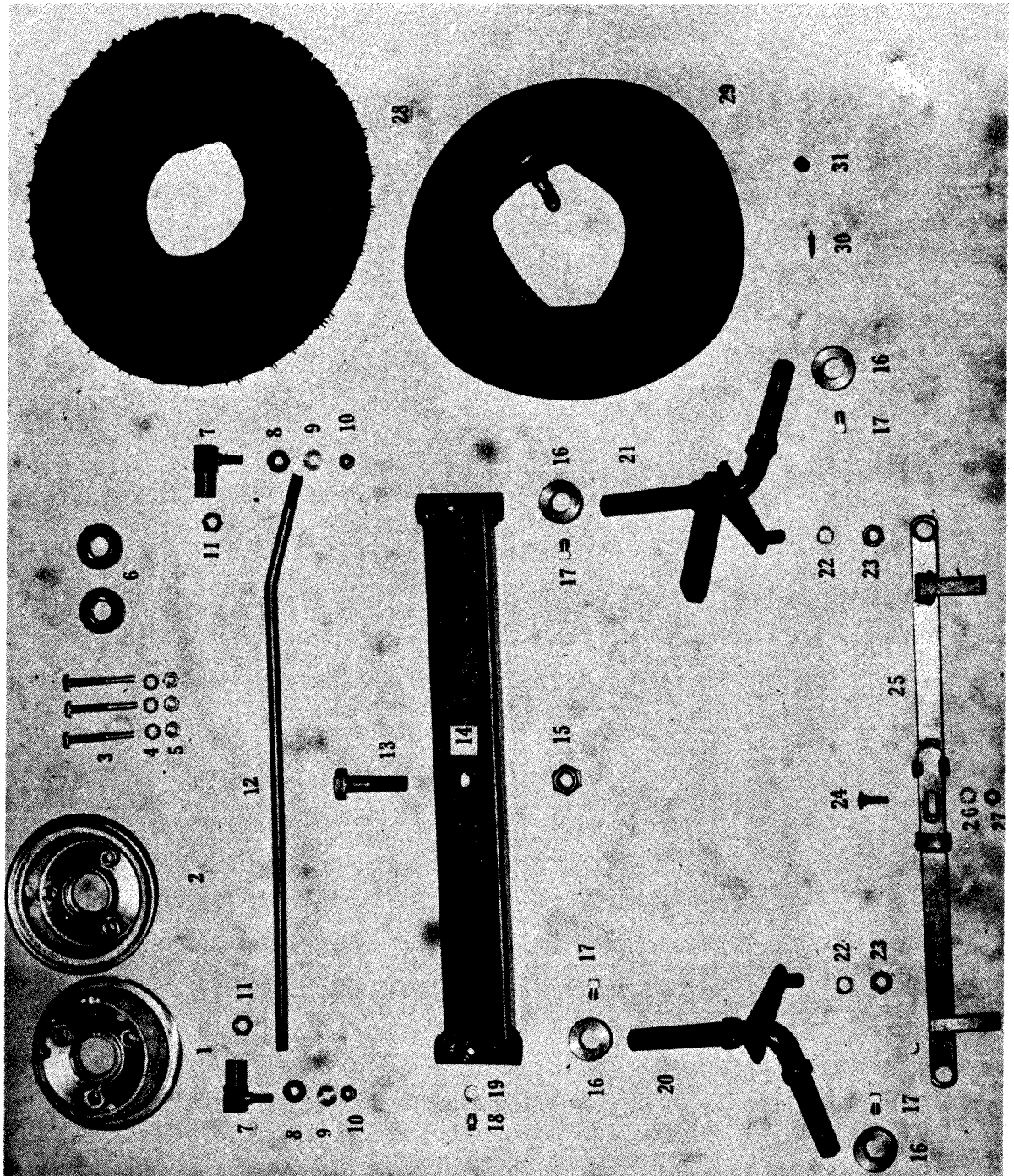
MINI

CHASSIS PARTS

INDEX	PART NO.	DESCRIPTION	
1	GT 871	Frame Assembly	Mini Tractor
2	GT 560	Foot Pedal Rubber	
3	GT 872	Foot Pedal	
4	GT 1028	Bolt $\frac{1}{2}$ x $\frac{3}{8}$ W	
5	GT 65	Washer Flat $\frac{3}{4}$ x $\frac{3}{8}$ x 18G	
6	GT 873	Seat Mounting Bar	
7	GT 874	Clutch Operating Rod	
8	GT 164	Split Pin	
9	GT 1005	Pivot Plate	
10	GT 875	Steering Gear Support Strap	
11	GT 911	Steering Gear Vertical	
12	GT 628	Shaft Collar 7/8	
13	GT 218	Grub Screw 5/16 x 5/16 W	
14	GT 218	Tow Bar Pin	
15	GT 876	Plate — Drag Link	
16	GT 910	Steering Shaft and Gear Horizontal	
17	GT 523	Knob	
18	GT 877	Hand Brake Lever	
19	GT 118	Bolt $1\frac{1}{4}$ x $\frac{3}{8}$ W	
20	GT 1012	Washer $\frac{3}{8}$ x $\frac{7}{8}$ x 18G	
21	GT 4	Nut $\frac{3}{8}$ W Nyloc	
22	GT 139	Rear Drive Fork	
23	GT 351	Spring — Hand Brake Engaging	
24	GT 22	Washer — Spring Retaining	



# ILLUSTRATION 4



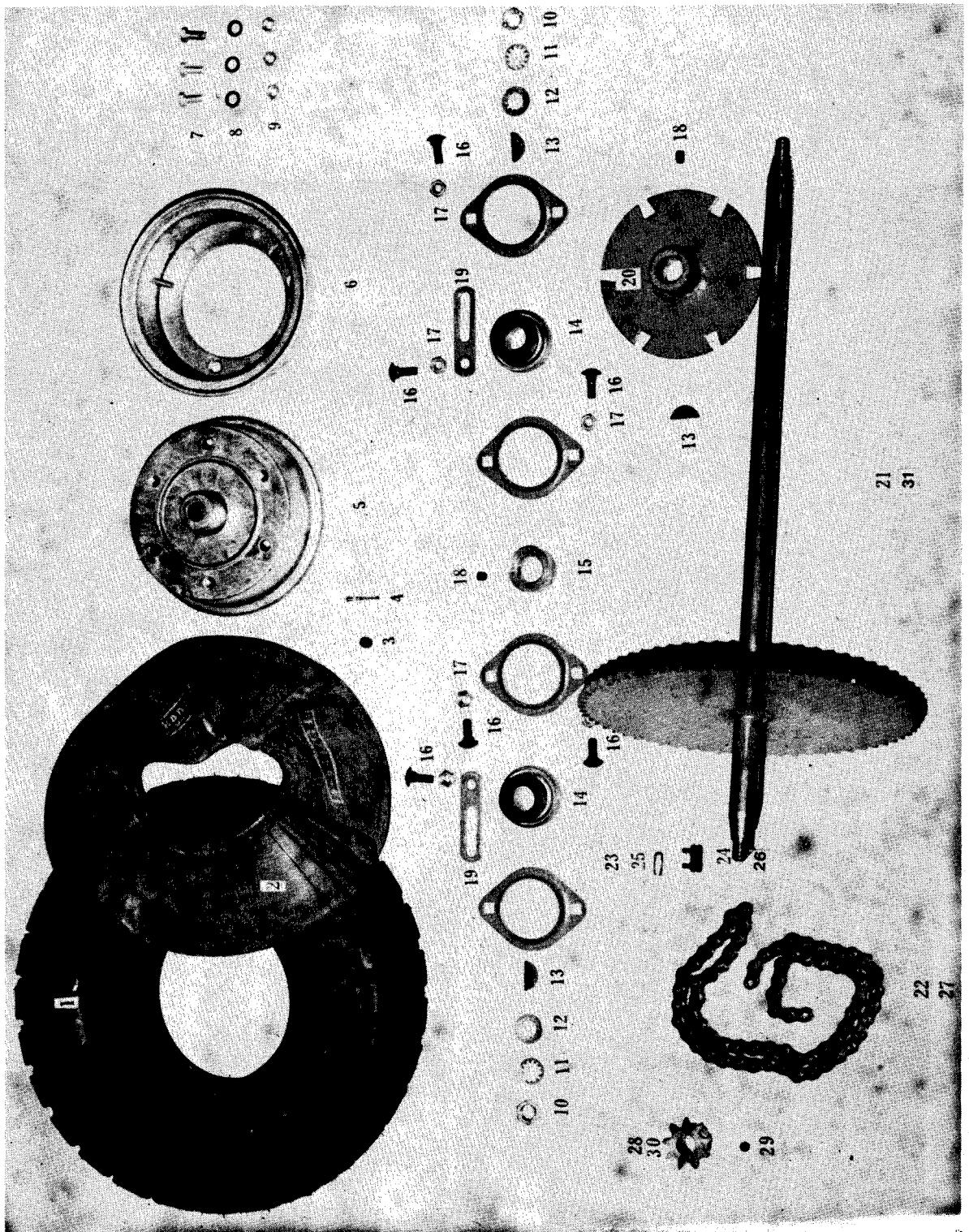
## ILLUSTRATION NO. 4

MINI

FRONT AXLE ASSEMBLY

INDEX	PART NO.	DESCRIPTION
1	GT 437	Wheel Hub 4" Outer
2	GT 437	Wheel Hub 4" Inner
3	GT 1030	Bolts 2 x 1/4 W
4	GT 1026	Shakeproof Washer 1/4
5	GT 17	Nut 1/4 W
6	GT 398	Wheel Bearing
7	GT 923	Drag Link Ball Joint
8	GT 535	Felt Seal
9	GT 1022	Flat Washer 1/4 x 5/8 x 18G
10	GT 79	Nut 1/4 SAE Nyloc
11	GT 78	Nut 3/8 SAE Lock
12	GT 881	Drag Link
13	GT 1031	Pivot Bolt 1 3/4 x 1/2 W
14	GT 882	Front Axle Beam
15	GT 1032	Nut 1/2 W Nyloc
16	GT 628	Shaft Collar 5/8
17	GT 526	Grub Screw Square Head
18	GT 571	Grease Nipple
19	GT 1033	Washer 1/4 Flat
20	GT 883	King Pin R.H.
21	GT 884	King Pin L.H.
22	GT 260	Pivot Bush
23	GT 4	Nut 3/8 W Nyloc
24	GT 124	Bolt 1/4 Cup Head
25	GT 925	Tie Rod
26	GT 1026	Shakeproof Washer 1/4
27	GT 97	Nut 1/4 W Nyloc
28	GT 466	Front Tyre 4" 410 x 350 x 4
29	GT 467	Tube 4" 410 x 350 x 4
30	GT 470	Valve Core
31	GT 471	Valve Cap

# ILLUSTRATION 5



## ILLUSTRATION NO. 5

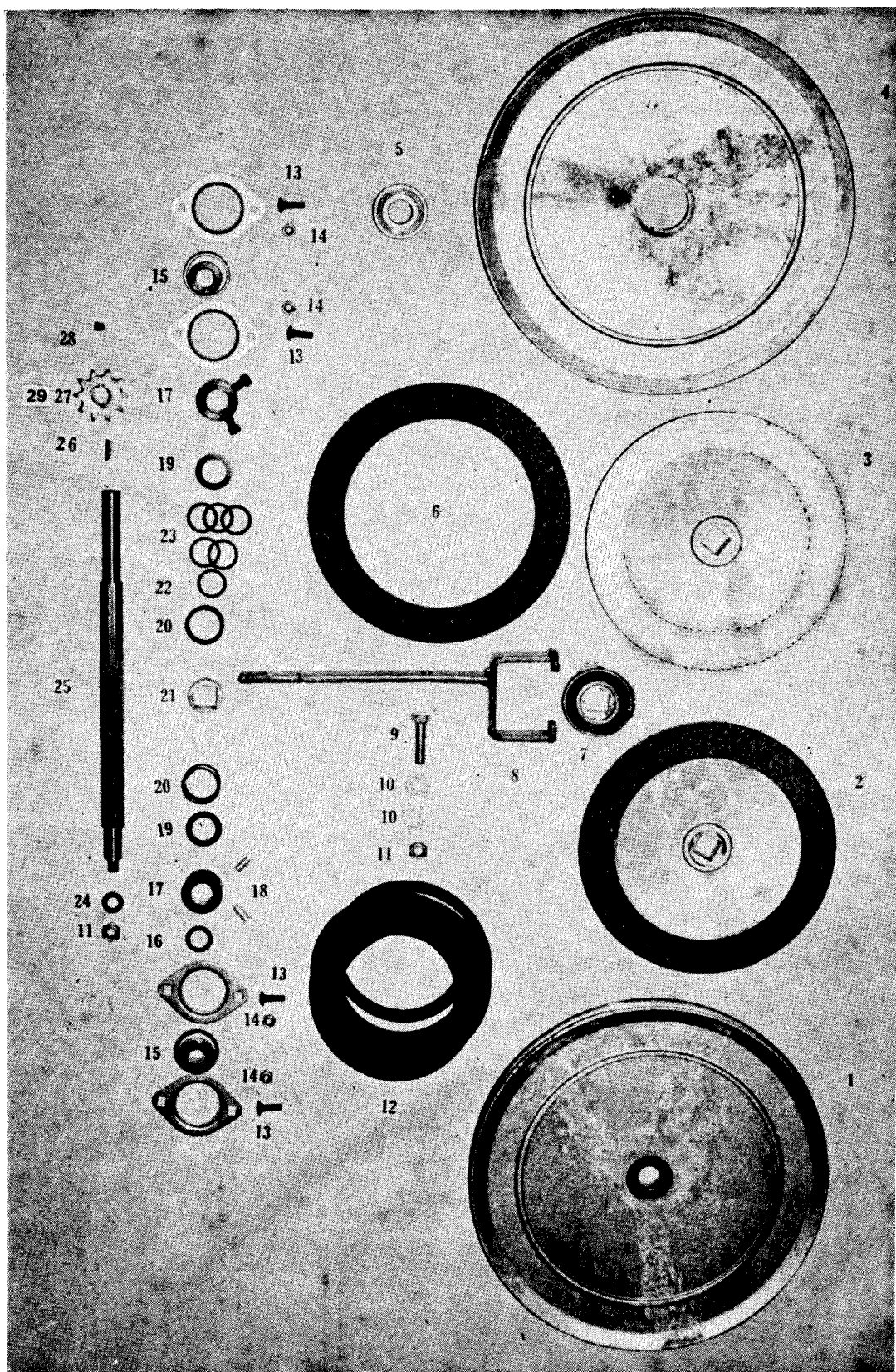
MINI

REAR AXLE

INDEX	PART NO.	DESCRIPTION
1	GT 464	Tyre Rear 6" 5.30 x 6
2	GT 465	Tube Rear 6" 5.30 x 6
3	GT 471	Valve Cap
4	GT 470	Valve Core
5	GT 438	Wheel Hub Inner 6"
6	GT 439	Wheel Rim Outer 6"
7	GT 1034	Bolt 1" x 5/16 W
8	GT 85	Shakeproof Washer 5/16
9	GT 73	Nut 5/16 W
10	GT 177	Nut 1/2" SAE
11	GT 22	Shakeproof Washer 1/2
12	GT 23	Washer Flat 1/2
13	GT 516	Key No,13
14	GT 391	Rear Axle Bearing & Plates 7/8"
15	GT 549	7/8 Collar
16	GT 1021	Bolt Bearing Mounting
17	GT 1020	Nut 5/16 W Nyloc
18	GT 520	Grub Screw 5/16 x 5/16 W
19	GT 156	Plate-Chain Adjusting
20	GT 924	Brake Plate 7/8
21	GT 918	Rear Axle Suit .335 BSS Roller Chain
22	GT 500	Chain .335 BSS Roller
23	GT 506	Con Link Clip Suit .305 ASA Roller
24	GT 501	Con Link Suit .335 BSS Roller
25	GT 507	Con Link Clip Suit .335 BSS Roller
26	GT 504	Con Link Suit .305 ASA Roller
27	GT 512	Chain .305 ASA Roller
28	GT 809	9 Tooth Pinion Suit .335 BSS Roller
29	GT 519	Grub Screw 5/16 SAE
30	GT 835	9 Tooth Pinion Suit .305 ASA Roller
31	GT 919	Rear Axle & Sprocket Suit .305 ASA Roller Chain



# ILLUSTRATION 6



## ILLUSTRATION NO. 6

MINI

REAR DRIVE

INDEX	PART NO.	DESCRIPTION
1	GT 920	Drive Pulley 12" — Complete
2	GT 926	Drive Plate & Lining
3	GT 404	Drive Plate Only
4	GT 401	Drive Pulley 12" Only
5	GT 295	Bearing-Drive Pulley 20 mm.
6	GT 567	Clutch Lining Rear
7	GT 927	Thrust Bearing Complete
8	GT 139	Rear Drive Fork
9	GT 1007	Bolt 1½ x 3/8 W
10	GT 1012	Washer 3/8 x 7/8 x 18G
11	GT 4	Nut 3/8 W Nyloc
12	GT 371	Rear Belt
13	GT 124	Cup Head Bolt ¼ W
14	GT 97	Nut ¼W Nyloc
15	GT 392	Flange Bearing Complete 5/8
16	GT 543	Spacer Fibre
17	GT 618	Collar
18	GT 526	Grub Screw 5/16 W
19	GT 539	Shim — Bearing Protector
20	GT 357	Neutral Spring
21	GT 405	Thrust Bearing Inner
22	GT 542	Shim Steel
23	GT 544	Adjustment Shim Fibre 1/16 & 1/32 Thick
24	GT 65	Washer 3/8 x ¾ x 18G
25	GT 803	Square Drive Shaft
26	GT 517	Key No.9
27	GT 809	(9 Tooth Pinion Suit .335 BSS Roller
28	GT 519	(Grub Screw 5/16 SAE
29	GT 835	(9 Tooth Pinion Suit .305 ASA Roller

This diagram illustrates the exploded view of a mechanical assembly, likely a pump or engine component. The parts are numbered 1 through 36. The assembly includes a main frame (1), a crankshaft (2), a connecting rod (3), a piston (4), a flywheel (5), a camshaft (6), a valve train (7, 8, 9, 10, 11, 12, 13, 14, 15, 16, 17, 18, 19, 20, 21, 22, 23, 24, 25, 26, 27, 28, 29, 30, 31, 32, 33, 34, 35, 36). The diagram shows the relative positions and assembly sequence of these components.

## ILLUSTRATION NO 7

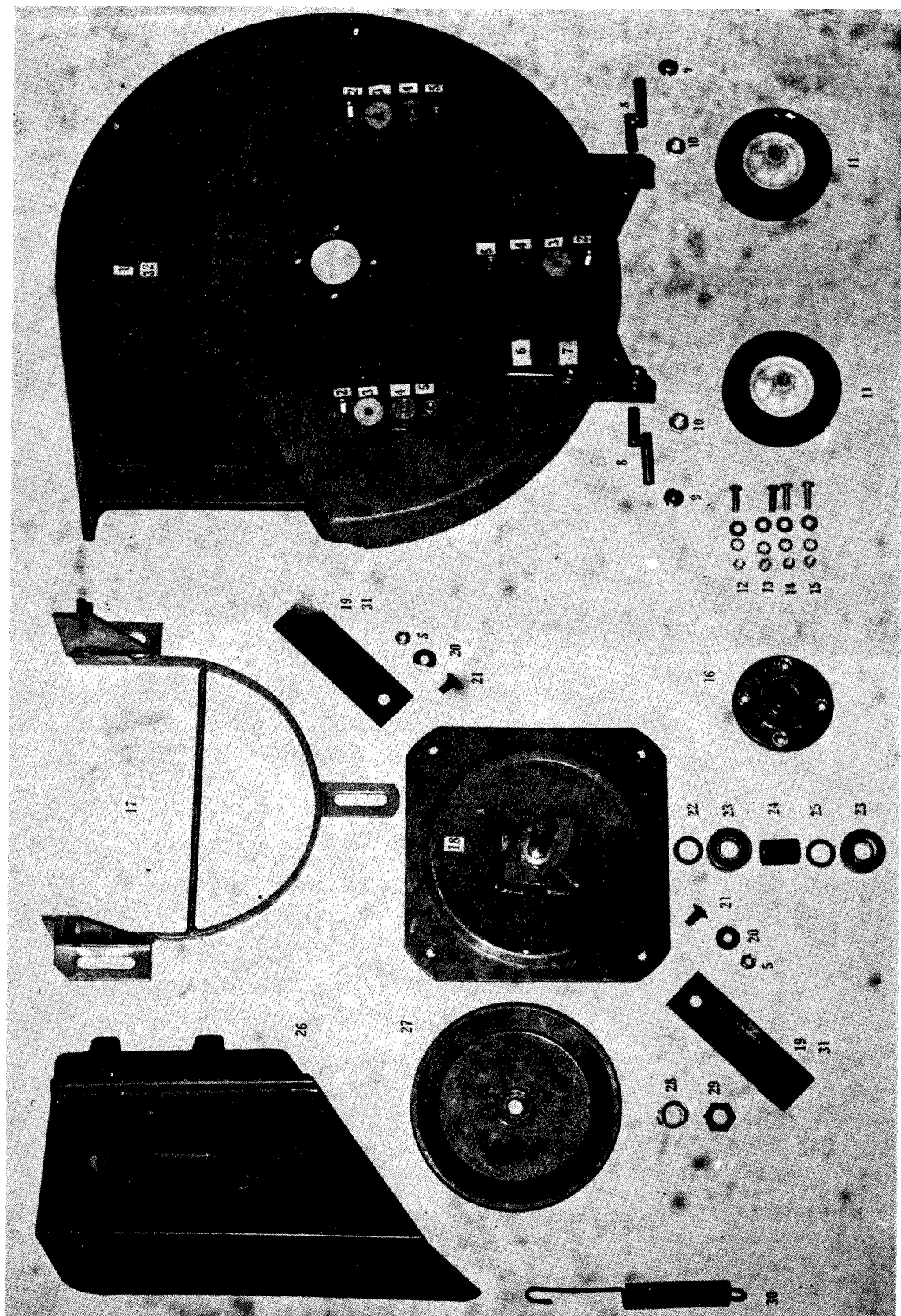
MINI

## HEIGHT ADJUSTMENT &amp; IDLER PULLEYS

INDEX	PART NO.	DESCRIPTION
1	GT 885	Rear Idler Pulley Mounting Bracket
2	GT 118	Bolt — Rear Idler Mounting $1\frac{1}{4}$ x 3/8W
3	GT 329	Bearing Adaptor 17 mm
4	GT 363	Spring — Rear Belt Tension
5	GT 396	Bearing — Rear Idler 17 mm
6	GT 1012	Washer 3/8 x 7/8 x 18G
7	GT 4	Nut Nyloc 3/8 W
8	GT 65	Washer 3/8 x $\frac{3}{4}$ x 18G
9	GT 1008	Steel V Idler Pulley & Bearing 15 mm
10		
11	GT 1009	Steel Flat Idler Pulleys & Bearing 15 mm
12	GT 565	Retainer
13	GT 802	Idler Shaft
14	GT 1020	Nut 5/16 W Nyloc
15	GT 85	5/16 Shakeproof Washer
16	GT 1035	Washer 5/16" x $\frac{3}{4}$ x 18G
17	GT 157	Bolt 5/16" x 1"
18	GT 367	Spring — Rack Tension
19	GT 886	Rack
20	GT 260	Pivot Bush
21	GT 579	Tension Washer 3/8
22	GT 96	Bolt 1 x $\frac{1}{4}$ W
23	GT 514	Lifting Chain
24	GT 17	Nut $\frac{1}{4}$ W
25	GT 1022	Washer $\frac{1}{4}$ x 5/8 x 18 G
26	GT 97	Nut $\frac{1}{4}$ W Nyloc
27	GT 523	Knob
28	GT 887	Height Adjustment Lever
29	GT 102	Bolt 5/8 x $\frac{1}{4}$ W
30	GT 97	Nut Nyloc $\frac{1}{4}$ W
31	GT 599	Spring Plate
32	GT 889	Top Link
33	GT 888	Bottom Link
34	GT 171	Bolt 1 x 3/8 W
35	GT 74	Idler Pulley Complete 17 mm
36	GT 201	Rubber Tension Sleeve



# ILLUSTRATION 8



## ILLUSTRATION NO. 8

MINI

CUTTER HOUSING &amp; BLADES

INDEX	PART NO.	DESCRIPTION
1	GT 419	Cutter Housing 25"
2	GT 3	Stud 3/8 W x 1 1/4 W
3	GT 1025	Washer 3/8 x 1 1/4 x 16G
4	GT 608	Slide Bush
5	GT 4	Nut 3/8 W Nyloc
6	GT 1023	Bolt-Spring Anchor 2 x 5/16 W
7	GT 73	Nut 5/16 W
8	GT 921	Wheel Axle
9	GT 564	Hub Cap
10	GT 194	Lock Nut 1/2 W
11	GT 460	5" Wheel
12	GT 73	Nut 5/16 W
13	GT 85	Shakeproof Washer 5/16
14	GT 1035	Washer Flat 5/16 x 3/4 x 18 G
15	GT 157	Bolt 1 x 5/16 W
16	GT 417	Spindle Housing Only
17	GT 890	Cutter Attachment Frame
18	GT 930	Blade Holder & Spindle
19	GT 892	Blade 25"
20	GT 579	Tension Washer
21	GT 578	Blade Bolt
22	GT 540	Shim .040" Thick
23	GT 395	Spindle Bearing 20 mm.
24	GT 241	Spacer — Spindle Housing
25	GT 539	Shim .010" Thick
26	GT 891	Deflector
27	GT 450	Pulley 8" L.H. Thread
28	GT 811	Spacer
29	GT 1036	Nut 3/4 SAE L.H.
30	GT 361	Belt Tension Spring
31	GT 894	Blade 28"
32	GT 441	Cutter Housing 28" (Not Illustrated)
33	GT 985	Blade 28" Fluted (Not Illustrated)
34	GT 589	Bearing Shield (Not Illustrated)
35	GT 590	Spacer Fibre (Not Illustrated)
36	GT 893	25" Blade Fluted (Not Illustrated)



## ILLUSTRATION NO. 9

MINI

COVERS, SEAT, STEERING WHEEL AND DECALS

INDEX	PART NO.	DESCRIPTION
1	GT 870	Bonnet
2	GT 869	Seat Frame
3	GT 868	Rear Cover
4	GT 1006	Washer $\frac{1}{4}$ x $\frac{1}{2}$ x 18G
5	GT 1026	Shakeproof Washer $\frac{1}{4}$
6	GT 102	Bolt $\frac{5}{8}$ x $\frac{1}{4}$ W
7	GT 429	Steering Wheel
8	GT 21	Nut — Steering Wheel
9	GT 22	Shakeproof Washer $\frac{1}{2}$
10	GT 23	Flat Washer $\frac{1}{2}$ x 1 x 16G
11	GT 518	Key No.6
12	GT 103	Bolt — Seat Lock $\frac{3}{8}$ W x $\frac{3}{4}$ W
13	GT 1012	Washer $\frac{3}{8}$ x $\frac{7}{8}$ x 18G
14	GT 553	Foam Insulation Strip
15	GT 867	Grille
16	GT 582	Wire — Seat Cover Securing
17	GT 573	Seat Cover
18	GT 491	Instruction Decal 2 Stroke
19	GT 476	Greenfield Tractor Decal R.H.
20	GT 476	Greenfield Tractor Decal L.H.
21	GT 484	"Important" Decal
22	GT 478	25" Models Decal
23	GT 485	Belt Sizes Decal
24	GT 488	"In—Out" Decal
25	GT 486	Height Decal
26	GT 479	28" Decal



# OPERATING INSTRUCTIONS

## 8 HP & 5 HP 4 CYCLE BRIGGS & STRATTON ENGINE

### BEFORE STARTING:

- |             |  |
|-------------|--|
| Fuel Tank   | — Top up with standard petrol. Make sure the petrol is free of impurities or water.  |
| Crank Case  | — Check oil level. Top up to the mark indicated on the dip stick (8 H.P.) or to overflowing (5 H.P.). Engine oil should be changed after the first 3 hours operation and every 15 hours thereafter. Change engine oil more often if operating in heavy or dusty conditions. Use B.P. Super Visco-Static Oil. |
| Air Cleaner | — Clean periodically and refit as per engine instruction leaflet. Air cleaner pad must be re-oiled. If operating in dusty conditions frequent servicing will be necessary  |
| Drive Belts | — Inspect belts for damage. Check the operation of the automatic tensioners.   |
| Blades      | — Check the condition of the blades and bolts. Replace if damaged or worn.   |
| Tyres       | — Check tyre pressures. Correct pressure 20 P.S.I. All 4 wheels must be equal.   |

### START:

- |               |  |
|---------------|--|
| Hand Brake    | — Release  |
| Engine Clutch | — Disconnect (Out)   |
| Fuel          | — Turn on petrol tap (if fitted). Refer engine instructions for location.  |
| Throttle      | — Set control to start position.   |
| Starter       | — Pull cord steadily. When engine starts allow the cord to retract slowly. |

### EVERY 15 HOURS:

- |            |  |
|------------|--|
| Crank Case | — Drain oil whilst hot and refill to correct level. Use BP Super Visco-Static Oil. <b>Do not overfill.</b> Refer to engine maker's instructions. |
|------------|--|

### TO STOP:

- |               |  |
|---------------|--|
| Hand Brake    | — Apply.   |
| Engine Clutch | — Disconnect fully.  |
| Engine        | — Allow to fast idle and cool down for a minute or two before switching off.   |
| Throttle      | — Set control to stop position.  |
| Fuel          | — Turn petrol tap off (if fitted).   |
| Cleaning      | — Clean the grass and debris from the top of the blade housing after mowing. When washing the machine do not use high pressure hose as this will force water into the bearings, clutches etc. Wipe over with a damp cloth. |
| Storing       | — Store in a cool, clean, dry place. If storing for any length of time drain fuel from tank etc.   |

.....

## INSTRUCTIONS

### VICTA ENGINE 2—STROKE MODEL

#### BEFORE STARTING:

- |                  |  |
|------------------|--|
| Petrol           | — Top up tank with B.P. Zoom TWO STROKE mixture. Use funnel and tube provided. |
| Air Cleaner      | — Clean or replace when choked.  |
| Drive Belts      | — Check tension and condition.   |
| Blades and Bolts | — Check condition, if worn or cracked replace with genuine parts.              |
| Tyres            | — Check pressure 20 P.S.I. All 4 wheels must be equal.                         |
| Check            | — For loose nuts and bolts or anything that is not normal.                     |

#### TO START: Ensure engine clutch lever is in out position

- |          |   |
|----------|---|
| Fuel     | — Turn tap on.  |
| Throttle | — Open half way   |
| Tickler  | — Hold down for several seconds. Don't tickle carby when hot.                         |
| Starter  | — Pull cord smartly. Do not pull cord out to its limit, allow cord to retract slowly. |

#### TO STOP: Halt by gentle use of foot pedal.

- |               |   |
|---------------|---|
| Engine Clutch | — Move lever to Out position  |
| Engine        | — Move throttle to slow position.   |
| Fuel Tap      | — Turn tap to off position and allow the engine to run at a fast idle until the carburettor is empty. |

- Storing — Store in a cool, clean, dry place.  
Winter Storage — Run engine with fuel tap in off position to drain carby. Drain fuel from the tank.
- Spark Plug — For removal for cleaning or replacing, use the spanner provided. Spark plug is accessible from left side without removing the bonnet. For full engine access remove steering wheel, black throttle knob and then bonnet. Use only genuine spark plugs.

\*\*\*\*\*

## GENERAL INSTRUCTIONS

### All Models

- Operating — Your Greenfield can be driven with or without the blades turning. The pivoted foot pedal controls forward and reverse movement. The pedal also doubles as a brake, but sudden direction reversal and wheel spinning should be avoided. Increased toe or heel pressure provide speed variations from 0–6 m.p.h. as required.  
REMEMBER — Don't stand on the pedal. A light toe or heel pressure is all that is necessary. If a higher pressure appears necessary suspect fractured cords in the drive belt.
- Hand Brake — Release from lock. Do not force the lever. It will spring into a locking notch if moved slightly forward or backwards.
- Belts — Greenfields are fitted with 2 independent drives. One drive belt propels the unit and the other drives the attachments through the engine clutch. Both belts are self-adjusting. If the belts are ever replaced use genuine belts only, branded Greenfield.
- Belt Replacement — Drive belt — remove front and rear cover. Remove split pin securing blade clutch rod (left side near foot pedal). Remove rod and clutch fork. Fit belt to engine pulley first, then over idler pulley around bottom of large rear pulleys then spring loaded pulley (lift ratchet rack and pull spring loaded pulley towards large pulleys). Avoid winding tight belt over pulleys. This fractures the internal cords of the belt.
- Seat Adjustment — Seat adjustment stud is located under the seat cover. Loosen stud and slide seat forward or back as desired. This adjustment stud also secures the back cover.

\*\*\*\*\*

## HINTS TO HELP YOU

- Engine Clutch — From the seated position — the lever forward on right hand side is the engine clutch lever. This must be applied slowly (like a clutch on a car). To release — just pull the lever back, it takes about 10 seconds for the drive to stop.
- Height Adjustment — The height adjustment lever is located near your right knee, pull out and up to high, and down to low. This can be done on the move or stationary.
- Rear Drive — The foot pedal on the right hand side is the control pedal, toe pressure will move the machine forward, heel pressure backwards. Only light pressure is required. Avoid rapid reversal of direction and "wheelies". Rough usage will shorten the operating life. Oil pedal pivots when required.
- Brake — Left hand side of machine and to the rear is located the parking brake. This must be pushed down and out to engage. It locks into one of six slots located on a disc on the rear axle. The machine may sometimes have to be moved a few inches to engage these slots. To disengage, push the lever down and inwards.  
Check to see that wheel nuts are secure, also nut on steering wheel.
- Lubrication — Grease the foot pedal pivot, king pin pivot and steering shafts. Use B.P. Energrease L2.
- Rear Chain — Rear chain adjustment is located on the rear axle. Loosen off the 5 clamp bolts on each side of the axle. Tension axle backwards on both sides until chain is correctly tensioned, then secure clamp bolts. CAUTION: Its important that the two sprockets be in correct alignment. Check carefully. Once a year, the chain should be removed, thoroughly cleaned with kerosene and lubricated with B.P. Chain Lubricant.

- Belt Adjustment — The mower attachment is spring loaded for automatic belt adjustment. To replace the blade driving belt insert a lever behind the left foot pedal support and engage the front edge of the mower attachment casting, apply pressure forward to counter the spring tension, fit belt and remove lever. DO NOT force the belts over the pulley edge, this could fracture the internal cords of the belt. Use only genuine Greenfield belts. Avoid mowing over sticks and debris, as sticks etc., following the belts through the pulleys will shorten belt life or break them. Keep the top of blade housing clean.
- Steering Adjustment — The steering gear mesh is adjustable by relocating the Stop collar on the horizontal shaft and lowering the vertical steering tube; when the tops of the gears are level the mesh is correct. Make sure the lock screws are tight.
- Seat Adjustment — The seat adjusts and slides by loosening the centre mounting stud under the seat cover. Check tyre pressure regularly — all 4 wheels must be the same. If the unit is used as a towmotor for long periods, remove the cutter housing and blade clutch assembly.
- .....

## GUARANTEE

*Greenfield Products Pty. Ltd., the manufacturer, guarantee their product free of faulty workmanship and material for a period of six months. Rear Drive Clutch Linings are guaranteed for 2 [two] years to the original purchaser. Blades, Belts, Tyres, Tubes are excluded. Fair wear and tear, damage caused by misuse, neglect and accidents are not covered. Engines used on Greenfield Tractors carry the respective manufacturer's warranty. Parts considered to be faulty should be returned to the factory either direct or through the local dealer with all necessary information, freight paid, for inspection. In all warranty claims the Manufacturer's decision is final and binding.*

P.O. BOX 155,  
ROCKLEA, ....4106

*Greenfield Products Pty. Ltd.,*  
212 BEATTY ROAD,  
ARCHERFIELD,  
BRISBANE, Q.  
AUSTRALIA, 4108

