

Greenfield

Evolution

MODELS



14 OHV **32**

HONDA **13** OHV **32**



Instructions & Spare Parts

Greenfield Products Pty Ltd
172 Ingram Rd, Acacia Ridge, Q 4110 Australia
Fax (07) 344 1161 Phone (07) 345 6100

Greenfield

Evolution

MODELS Briggs & Stratton 14 OHV 32
Honda 13 OHV 32

Thank you for buying an Australian made Greenfield mower. Follow the manufacturer's operating and maintenance instructions and many years of excellent trouble free service can be expected.

Before operating the mower read the owner's manual carefully. Do not allow children or any person unfamiliar

with the safe operating procedure to operate this mower. Your Greenfield mower has been designed to meet stringent safety standards — but we remind you that a mower is a cutting device — used incorrectly it could cause personal injury.

SAFETY INSTRUCTIONS

1. Do not carry passengers.
 2. Know your controls. Read the operating instructions carefully. Learn how to stop the mower and the engine quickly in an emergency.
 3. Do not mow whilst people, especially children or pets are in the mowing area.
 4. Make sure the area to be mown is clear of sticks, stones, bottles, bones, wire and other debris which could be thrown by the blades.
 5. Do not operate the machine without first inspecting the blades, blade bolts and blade holder for wear or damage.
- DAMAGED BLADES AND WORN BOLTS ARE MAJOR HAZARDS**
- Always replace blades and blade bolts in sets to preserve balance. Replace worn or damaged parts with **GENUINE GREENFIELD** replacement parts only.
- N.B. Use of inferior non-genuine service parts on your Greenfield mower could result in costly damage and even personal injury.
- Refer "Maintenance Instructions", for replacement part numbers and fitting instructions.
6. Check that grass catcher, guards and switches provided by the manufacturer are operating properly and fitted securely. Regularly check all the components on the mower to ensure the machine is in a safe operating condition.
 7. Never mow while barefoot or wearing open sandals or thongs. Wear long trousers and heavy shoes. It is also advisable to wear suitable eye protection.
 8. A mower operator should be in good physical and mental health and not under the influence of any drug or alcohol which might impair vision, co-ordination or judgement.
 9. Replace worn or faulty silencers.
 10. Keep the engine free of grass, leaves or excessive grease. These can be a fire hazard.
 11. Refuel outdoors only. Do not smoke while fuelling engine. Never remove the cap of the fuel tank or add petrol while the engine is running or the engine is hot. Remove fuel cap slowly to relieve any tank pressure. If petrol is spilled do not attempt to start the engine but move the machine away from the area of the spill and avoid creating any source of ignition until petrol vapours have dissipated.
 12. Check for fuel leaks, while refuelling or using the mower. If a fuel leak is detected, do not start the engine until the fuel leak is fixed and the spilled fuel is wiped away.
 13. Do not operate the engine in a confined space where poisonous exhaust fumes (Carbon Monoxide) can collect.
 14. Always disengage the cutting means before starting the engine.
 15. Always mount the mower from the opposite side to the discharge chute.
 16. Exercise extreme caution when on slopes. Reduce speed particularly when making sharp turns to prevent overturning or loss of control. Do not stop or start suddenly when mowing uphill or downhill.
 17. Never operate a ride-on mower across the face of a slope.
 18. Stay alert for holes in the terrain and other hidden hazards.
 19. Before crossing paths, driveways or any other area foreign to mowers, disengage cutting blades and lift cutting attachment to maximum height.
 20. Watch out for traffic when crossing or operating the mower near roadways.
 21. When using any attachment, never direct discharge of material toward bystanders nor allow anyone near the machine while in operation.

22. Before leaving the operator's position —
 - a. disengage all clutches and secure cutting units.
 - b. apply the parking brake
 - c. stop the engine and remove the key.
23. Stop the engine and disengage the drive to the attachments —
 - a. before refuelling.
 - b. before removing grass catcher or any attachment.
 - c. before making a height adjustment unless adjustment is being made from the operator's position.
 - d. before cleaning blockages.
 - e. before inspecting, cleaning or working on the mower.
 - f. after striking a foreign object (inspect the mower for damage and make necessary repairs before restarting and operating the machine)
 - g. If the machine starts to vibrate abnormally (check immediately).
24. Disengage drive to attachments when not in use or in transporting.
25. Do not over-speed the engine or alter governor settings. Excessive speed is dangerous and shortens the mower's life.
26. Use care when pulling loads or using attachments.
 - a. use only approved drawbar hitch points
 - b. limit loads to those you can safely control
 - c. do not turn sharply. Use care when backing up.
27. Store the mower in a well ventilated room away from naked flames such as may be found in hot water heaters.
28. Do not lend or sell the mower without the owner's manual.
29. **WARNING** — Remove spark plug lead to avoid accidental starting **BEFORE** attempting any maintenance or inspection of the mower.

OPERATING INSTRUCTIONS

Do not allow children or any person unfamiliar with the safe operating procedure to use this mower.

Know your controls. Read the following instructions carefully. Learn how to stop the mower and the engine quickly in an emergency.

BEFORE STARTING

Fuel: Top with clean regular UNLEADED petrol only. Make sure the petrol is free from impurities. The petrol tank is located inside the engine compartment of your Greenfield. Raise the bonnet for access.

Engine Oil: Fill to the mark indicated on the dipstick. Don't overfill. Use Castrol GTX or S.A.E. 30 motor oil.

Tyres: Inflate to the pressure indicated on the tyres. Don't over inflate.

TO START:

Disengage blade clutch (Cutters Out) Apply park brake. Turn on fuel tap. For cold starting set throttle control to "CHOKE", push starter button. If engine does not start set throttle control half way then press button again.

IMPORTANT — This Evolution Model Greenfield mower is fitted with a safety 'cut-out' switch activated by the seat. The operator must be seated to start the engine and remain seated while operating the mower.

TO OPERATE:

A simple pivoted foot pedal controls forward, neutral and reverse. Increased toe or heel pressure provides speed variation in forward or reverse respectively. Allow pedal to centralise for neutral. The drive pedal can be used to reduce the speed of the mower by applying toe or heel pressure opposite to the directional movement of the mower. Sudden directional changes and / or wheel spinning must be avoided.

Although, in general use, the drive pedal can be used to brake the mower a foot operated emergency brake is also fitted. It is located on the right side over the drive pedal. To apply the parking brake first push the emergency brake then lift the parking brake knob. To release the parking brake push the brake pedal down and allow parking brake knob to drop. Release parking brake before attempting to drive the mower. To engage the cutting blades or alter the cutting height shift the respective levers in the control console.

For maximum belt life engage and disengage cutters with cutter height selector in the green band or a mid height position.

The operator's seat is adjustable front to rear. To adjust lift rear cover, loosen locking bolts, slide seat to position required, retighten bolts.

MAINTENANCE


Crankcase Lubrication — Change engine oil after first 5 hours of operation then every 15 working hours thereafter. Change more often in heavy or dusty conditions. Drain engine oil whilst engine is hot then replace with CASTROL GTX or CASTROL S.A.E. 30 motor oil. Fill to mark indicated on the dipstick. **DON'T OVERFILL.** Refer engine manufacturer's leaflet.

IMPORTANT — The Briggs & Stratton Vanguard engine is fitted with a 'spin on' oil filter cartridge. Change this filter after first 5 working hours (with first service) then every 50 working hours thereafter. B&S part number is 491056.

The Honda O.H.V. engine is fitted with an 'Oil Alert' system which sounds a warning buzzer whenever the oil drops below the safe level. Stop and add oil to the engine.

Air Filter: Service air filter as per engine manufacturer's leaflet. Clean more often in dusty conditions. Never operate the engine without the air filter correctly and securely fitted.

Cooling System: Remove the blower housing and clean out the grass and debris to prevent overheating. Refer engine manufacturer's leaflet.

Lubrication Points: Your Greenfield mower has 5 greasing points. A grease nipple is fitted to the steering link, part no. 46 on illustration 5. This link protrudes through the left side of chassis in front of the running board. The nipple is accessible from underneath with steering turned to the left. A grease nipple is fitted to each king pin, one each side of the front axle beam, part no. 21 on illustration 5. A grease nipple is fitted to the clutch lever assembly, part no. 35 in illustration 2. This nipple, facing upwards, is located between the two clutch pulleys and is accessible from under the rear cover. A grease nipple is also fitted to the clutch link bush, part no. 25 on illustration 2. This bush is located under the frame in front of the rear axle with the grease nipple facing rearwards.  Designates grease points on illustrations. Service these points annually with CASTROL LMM chassis grease. It is recommended that your grease gun be fitted with a flexible hose. All other exposed pivoting joints and lever points to be lubricated with engine oil. The rear drive chain should be removed, cleaned in kerosene and reoiled with CASTROL chain oil. Refer to "Removal and Replacement of Rear Drive Chain" instructions on page 4.

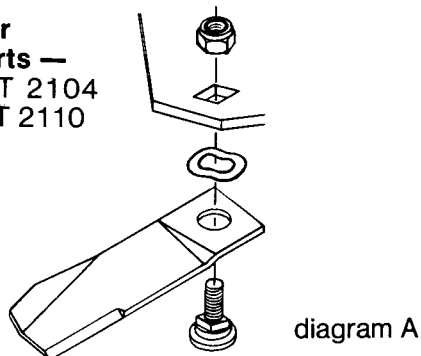
Battery: Top with distilled water as required. If externally charging, care is needed. Remove one battery terminal and TRICKLE CHARGE ONLY to avoid battery damage.

Wheels: The rear wheel nuts should be re-tensioned after the first 5 hours of operation, then regularly with your preventative maintenance checks.

Tyres: Inflate to pressure indicated on the tyres. Don't over inflate.

Blades: Check the condition of blades, blade bolts and blade holder. Replace if damaged or worn. Damaged blades and worn bolts are major hazards. Always replace worn or damaged blades or bolts in sets to preserve balance. Use only GENUINE Greenfield replacement parts. Use of inferior non-genuine service parts on your Greenfield could result in costly damage and even personal injury. Insist on genuine parts branded Greenfield.

Part numbers for replacement parts —
Cutter Blades GT 2104
Blade Bolt Set GT 2110



To fit new blades refer to diagram A. Tighten the blade bolt nuts firmly. Correct torque is 44 Nm. (32ft. lbs.) Blades must be free to turn but not loose.

WARNING — Remove spark plug lead to avoid accidental starting BEFORE inspecting or replacing cutting blades or belts, also before attempting any form of maintenance or cleaning of the mower.

Belts: Inspect the V belts and replace if damaged.

To remove drive-clutch V belt GT 120.

1. Lift and remove back cover.
2. Remove rear support bracket from clutch fork shaft.
3. With the hook tool, remove tension spring from idler pulley notch bar.
4. Pull release trigger backwards to allow idler pulley to travel backwards to permit belt removal.

To replace drive-clutch V belt GT 120.

1. Feed the belt down the back of the clutch pulleys and fit it into the bottom groove of reduction pulley.
2. Fit the belt over the flat idler pulley then into both clutch pulleys then into the idler pulley and push the notch bar forward.
3. Replace notch bar tension spring using hook tool.
4. Replace rear support bracket on clutch fork shaft.
5. Replace back cover.

To remove engine-drive V belt GT 6036.

1. To remove engine-drive V belt — first the drive-clutch V belt must be removed. Follow steps No. 1, 3, 4 of "To remove drive-clutch V belt" instructions and allow this belt to drop off the reduction pulley. It is not necessary to remove this belt completely.
2. Undo bolt in the end of the reduction pulley centre shaft. This will allow the supporting arm to swing away to allow for belt removal. A spacer will drop off the shaft when the arm is swung away. Take care to collect this. The pulley may also drop approximately 20mm but it will not come off.
3. Remove tension spring operating the idler pulley on the engine drive belt. Use the hook tool provided.
4. Drop belt off idler pulley then off the engine and reduction pulleys.

To replace engine-drive V belt GT 6036

1. Fit belt into bottom groove of engine pulley and top groove of reduction pulley. Fit over idler pulley and replace tension spring to idler pulley.
2. While ensuring reduction pulley is pushed back in place, replace spacer bush over end of pulley centre shaft. Swing supporting arm back into position and replace bolt.
3. Repeat steps No. 1, 2, 3 of "Drive-clutch V belt replacement" instructions.

To remove Cutter V belt GT 6037.

1. Disengage cutter clutch (cutters out).
2. To remove Cutter V belt the engine-drive V belt must first be removed. Follow steps No. 3 and 4 of "To remove engine-drive V belt" instructions. It is necessary to remove this belt from the engine pulley only.
3. Using 2 spanners $\frac{3}{8}$ BS remove the cast iron idler pulleys and belt guides in the front of the machine. N.B. Care must be taken not to drop these pulleys as they may crack or break with impact.
4. Disconnect linkage to cutter brake by removing nut retaining chain link to cutter brake arm on the cutter deck.
5. To remove the top belt guide from the cutter pulley remove the nut, bolt and spacer tube from one side, then loosen the other side to allow the guide to swing away.
6. Remove belt from machine.

To replace Cutter V belt GT 6037.

1. Refit the idler pulleys to the mounting brackets in this order — slip heavy washer onto the bolt, then the pulley. The bearing adaptor then slips over the bolt and into the bearing in the pulley. The belt is now held in the V groove while the belt guard is slipped over the bolt with the wings of the guard over the belt and pulley. This assembly is then offered up to the mounting bracket. Push the bolt through the predetermined hole (refer "Cutter Belt Adjustment") then fit another heavy washer and nyloc nut then retighten using the two spanners. N.B. Check pulleys turn freely inside belt guards with belt disengaged.
2. Fit belt to the top groove of the engine pulley then to the cutter pulley.
3. Replace belt guide around cutter pulley.
4. Replace cutter brake linkage.
5. Repeat step No. 1 of "Engine-drive V belt replacement" instructions.

Cutter Belt Adjustment

Both cutter belt idler pulleys can be adjusted to allow for belt stretch. The first adjustment should be required after approximately 10 hours of operation with further adjustments after approximately 50 hours. The right side pulley has four positions available.

When a new belt is fitted this pulley should be fitted in the second hole from the rear, or, if some wear to the pulleys is evident then fit it to the next hole forward.

The left side idler pulley bracket has two adjustment holes. The pulley is fitted in the rear hole at the factory and unless extraordinary belt stretch is experienced, adjustments to the right side only should suffice.

The cutter belt has an adjustment indicator decal on top of the chassis in front of the engine. When the cutter clutch is engaged and the pointer has travelled into the red zone an adjustment to the position of an idler pulley is required. Remove the pulley by following steps No. 1 and 3 of "To remove Cutter V belt" instructions. Be sure to note which mounting position the pulley was in then move it to the next position forward. Replace pulley by following step No. 1 of "To replace Cutter V belt" instructions.

The part numbers for V belts are —

Engine-drive V belt GT 6036

Drive-Clutch V belt GT 120

Cutters V belt GT 6037

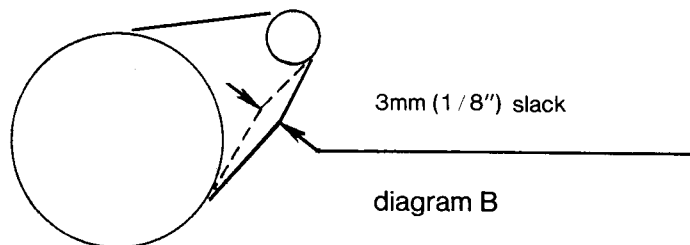
Use only GENUINE Greenfield replacement parts.

WARNING— Remove spark plug lead to avoid accidental starting BEFORE attempting any maintenance or inspection of the mower.

STEERING ADJUSTMENT

To remove excess slack from the steering chain —

1. Open the bonnet and with a 11mm socket loosen the nuts securing the flangette plates and bearing at the base of the steering shaft.
2. With fingers only pull the rear bolt in the slot to the right side of the machine. No force is required. Do not overtighten — the chain must have 3mm (1/8") of slack. Refer diagram B.
3. Retighten nyloc nuts.

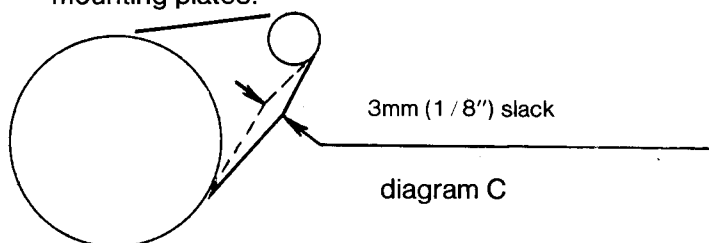


EMERGENCY BRAKE ADJUSTMENT

1. Screw nut on end of brake lever at rear of machine to adjust foot brake. N.B. Don't overtighten. Jack up rear of machine to check wheels still turn freely.
2. With every third or fourth adjustment of this nut it may be necessary to take a quarter turn on the adjusting screw on the fixed or outer brake pad.

REAR DRIVE CHAIN ADJUSTMENT

1. Unlock rear nuts on both rear axle flangette bearing mounting plates.
2. When adjusting, it is very important that the rear axle remains parallel to the mower chassis. Therefore the adjustment nuts positioned under the rear axle side plates should each be turned no more than a quarter of a turn at a time alternating between the two till the chain has 3mm (1/8") of slack. Don't overtighten. Refer diagram C.
3. Re-tighten both nuts on rear axle flangette bearing mounting plates.



Removal & Replacement of Rear Drive Chain: The Evolution model Greenfield is fitted with a heavy duty high tensile roller chain. The connecting link plate is a press fit on the connecting link pins. This can be assembled with a pair of multigrrips. To remove connecting link plate the manufacturer recommends an appropriate small lever or screw driver.

CLEANING: Don't use a high pressure hose when cleaning. Water can penetrate bearings and cause failure.

We suggest that you return your Greenfield to your local Greenfield dealer in winter for an annual preventative maintenance check.

DIFFERENTIAL INSTRUCTIONS

Operating and Safety

This Greenfield Evolution mower features a revolutionary new type differential. This differential offers the operator the option of the full differential action of the rear wheels necessary for fine lawns, or the ability to 'lock out' the differential when operating on slopes or uneven terrain.

With the differential operating, climbing hills, particularly diagonally across slopes, can, in some situations be unsafe. This is due to the operation of a differential. When one wheel loses traction the vehicle will stop. With the differential 'lock out' engaged, potentially dangerous situations are eliminated because both wheels are continually driving. The mower now has the ability to continue its forward motion up or across the slope removing any necessity to reverse down slopes.

When requiring the rear wheels to differential, the 'lock out' mechanism located in the right side rear hub is pulled out.

When the locked differential is required push 'lock out' mechanism in ALL THE WAY until the notched

flange is fully engaged on the wheel nuts. If the 'lock out' mechanism does not readily push in and engage, park the machine on a flat area with the engine switched off. Turn the steering wheel until wheels are near to right hand lock. By rolling the machine forward, the notches will align with the wheel nuts allowing the 'lock out' mechanism to engage.

Do not attempt this procedure from the operators seat or while the engine is running.

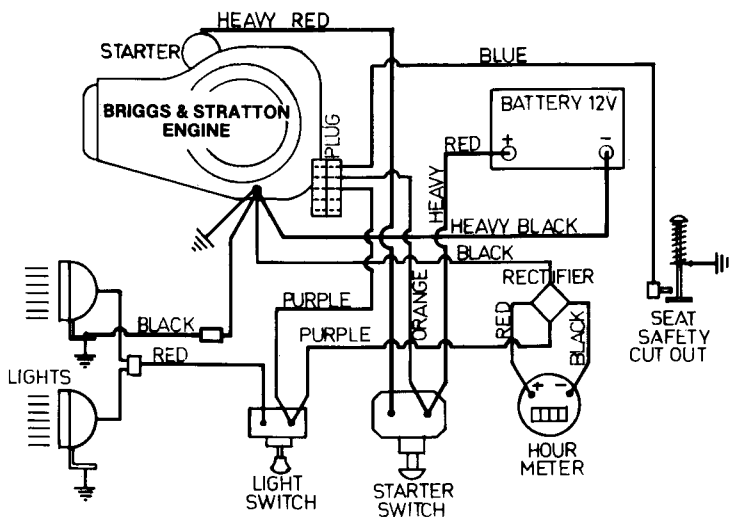
The rear wheel nuts should be re-tensioned after the first 5 hours of operation then regularly with your preventative maintenance checks.

If, for any reason the right side rear wheel needs to be removed the 'lock out' mechanism must first be detached. Remove bolt from the centre of axle which will allow 'lock out' mechanism to slip off. The wheel can then be removed as normal.

If in the unlikely event a differential does fail, the unit should be returned to the manufacturer intact. Units which have been previously dismantled will NOT be considered for warranty.

ELECTRICAL CIRCUITS

Evolution 14-32



Evolution 13-32

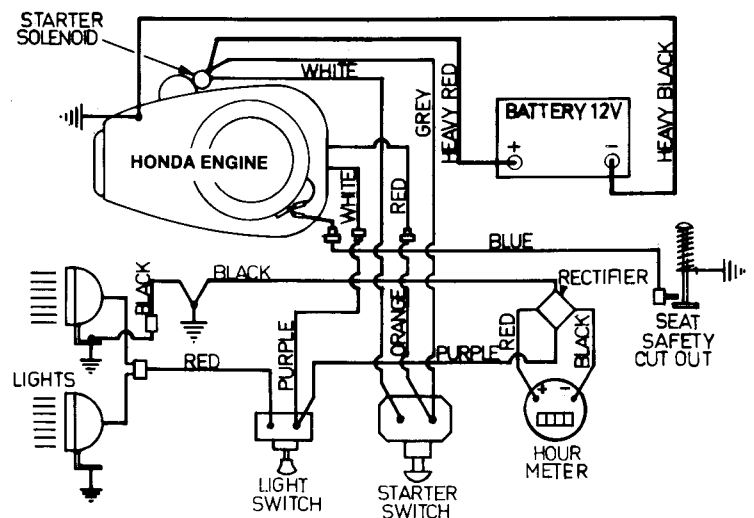
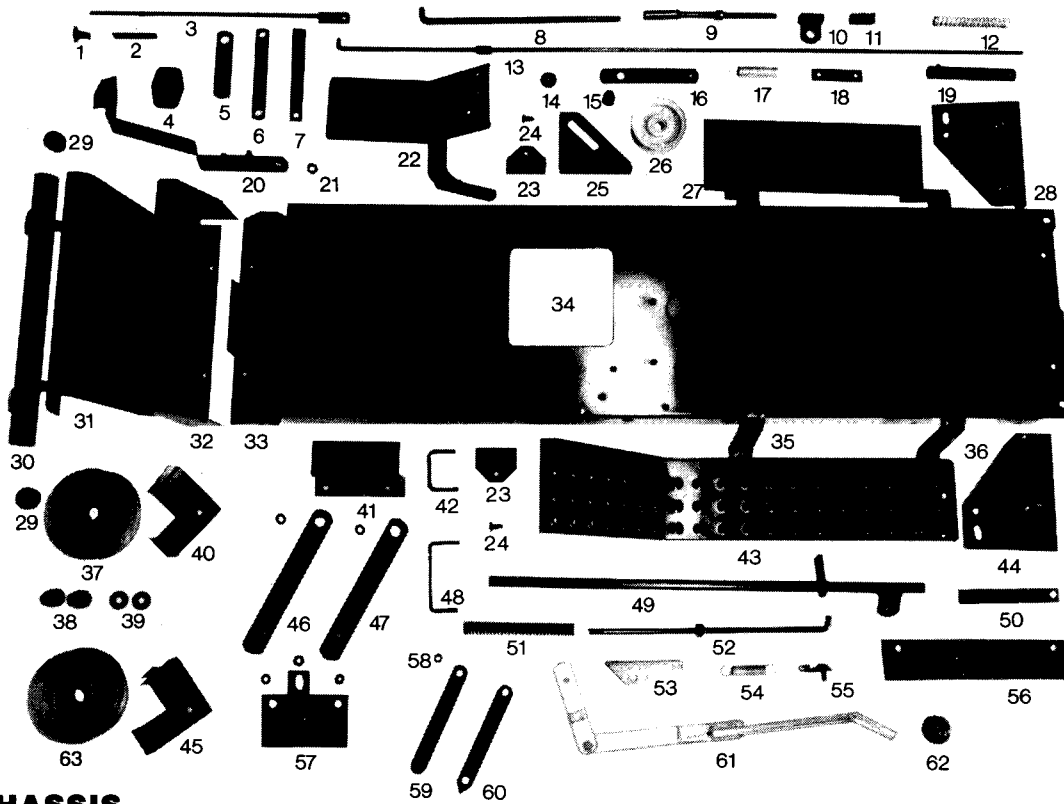


Illustration 1



FRONT CHASSIS

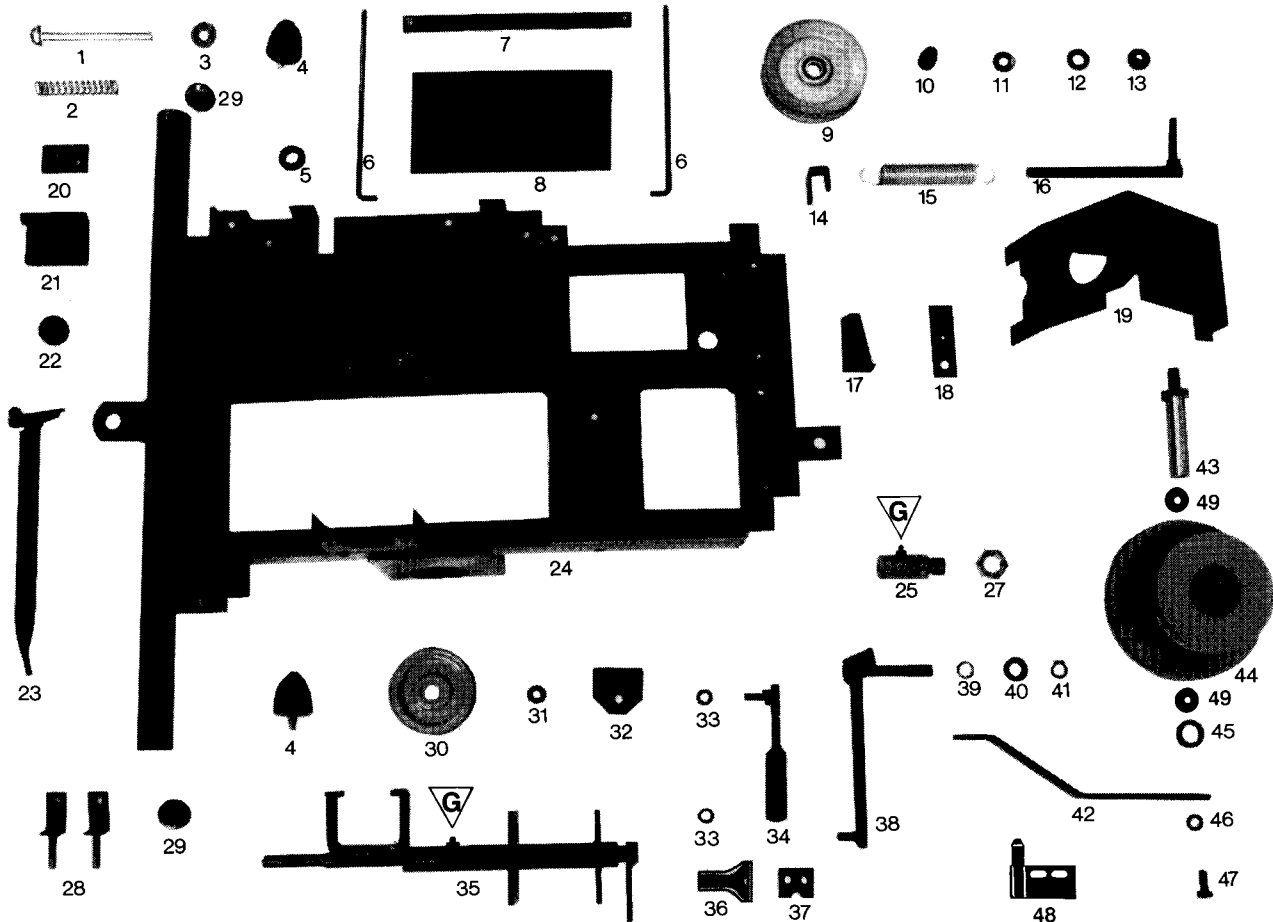
INDEX PART No.	DESCRIPTION	INDEX PART No.	DESCRIPTION
1	GT 6509 Knob	36	GT 6497 Rear Support
2	GT 6508 Tube	37	GT 6868 Idler Pulley Cast complete
3	GT 6445 Park Brake Rod	38	GT 6018 Bearing Adaptor
4	GT 6102 Rubber Pad	39	GT 9407 Washer
5	GT 6463 Transfer Lever	40	GT 6303 R.H. Belt Guide
6	GT 6459 Brake Link	41	GT 6386 Fixed Idler Bracket
7	GT 6461 Brake Release Arm	42	GT 6401 R.H. Belt Guide
8	GT 6316 F-R Control Link	43	GT 6362 L.H. Running Board
9	GT 6322 F-R Adjuster Link	44	GT 6369 L.H. Bracket
10	GT 6317 F-R Lug	45	GT 6613 L.H. Belt Guide
11	GT 6141 Spring F-R	46	GT 6611 Clutch Arm Front
12	GT 6022 Spring	47	GT 6608 Clutch Arm Rear
13	GT 6869 Brake Rod	48	GT 6400 L.H. Belt Guide
14	GT 608 Slide Bush	49	GT 6398 Pedal Support Shaft
15	GT 6165* Bearing Adaptor	50	GT 6577 Bolt Strap
16	GT 6635* Arm	51	GT 6066 Spring
17	GT 6062 Spring	52	GT 6518 Cutter Clutch Rod
18	GT 6579 Anchor	53	GT 6399 Bracket
19	GT 6577 Bolt Strap	54	GT 6064 Spring
20	GT 6458 Brake Pedal	55	GT 6580 Anchor
21	GT 1746 Pivot Bush	56	GT 6582 Attachment Strip
22	GT 6323 Foot Pedal F-R	57	GT 6600 Clutch Idler Bracket
23	GT 6493 Guide Bracket	58	GT 730 Bush
24	GT 1760 Nylon Button	59	GT 6605 Stabilizer Arm
25	GT 6902* Bracket	60	GT 6607 Indicator
26	GT 6171* Pulley	61	GT 6383 Handle
27	GT 6347 R.H. Running Board	62	GT 1565 Knob
28	GT 6368 R.H. Bracket	63	GT 6901 Idler Pulley Steel
29	GT 6081 Bung		
30	GT 6428 Bumper Bar		
31	GT 6426 Bumper Support		
32	GT 6357 Backing Plate		
33	GT 6408 Bonnet Mount Plate		
34	GT 6500 Main Chassis		
35	GT 6499 Front Support		

* For machines manufactured before Feb 1991

15	GT 609	Bearing Adaptor
16	GT 6315	Arm
25	GT 6863	Bracket
26	GT 1009	Pulley

Note: Standard hardware items are not shown.

Illustration 2



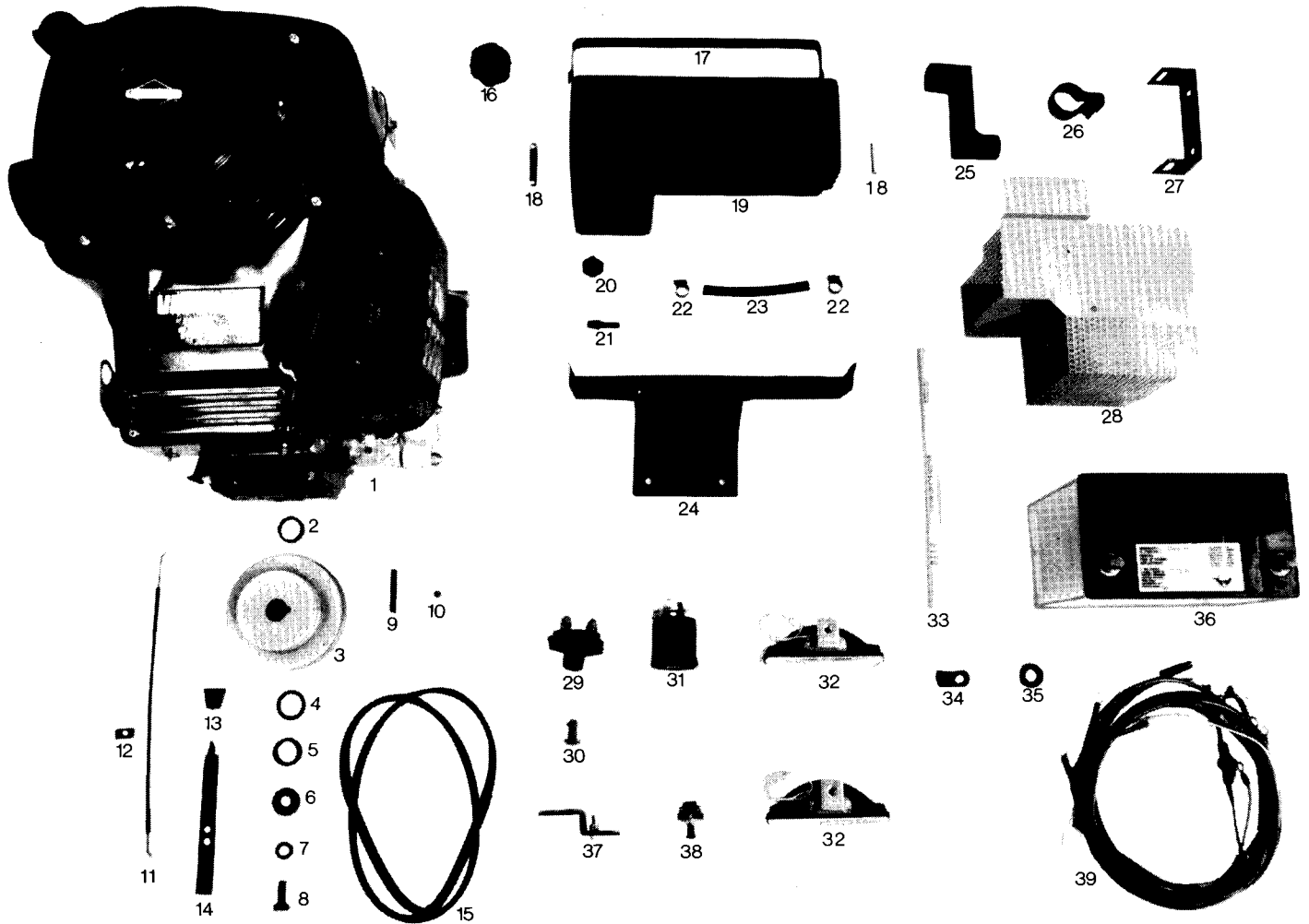
REAR CHASSIS

INDEX	PART No.	DESCRIPTION
1	GT 2080	Bolt
2	GT 6021	Spring
3	GT 6537	Brass Washer
4	GT 1228A	Seat Stop
5	GT 6079	Grommet
6	GT 6395	Hold Down Rod
7	GT 6394	Battery Clamp
8	GT 6320	Rubber Pad
9	GT 7965	Vee Pulley
10	GT 609	Adaptor
11	GT 579	Wave Washer
12	GT 23	Washer
13	GT 608	Slide Bush
14	GT 7308	Bracket
15	GT 1554	Spring
16	GT 6434	Notch Bar
17	GT 6432	Release Lever
18	GT 640	Leaf Spring
19	GT 6536	Bracket — Notch Bar
20	GT 6454	Locking Plate
21	GT 6851	Brake Pad Plate
22	GT 6121	Brake Pad
23	GT 6546	Calliper Actuator
24	GT 6501	Rear Frame
25	GT 7054	Bush

INDEX	PART No.	DESCRIPTION
26		Nut
27	GT 347	Nut
28	GT 6405	Adjuster
29	GT 6081	Bung
30	GT 1009	Pulley
31	GT 609	Adaptor
32	GT 6534	Bracket
33	GT 730	Pivot Bush
34	GT 6469	Clutch Link
35	GT 6617	Clutch Lever Assembly
36	GT 6593	Support
37	GT 6896	Backing Plate
38	GT 6466	Clutch Arm
39	GT 2046	Wave Washer
40	GT 23	Washer
41	GT 2010	Circlip
42	GT 6379	Brace
43	GT 6042	Shaft
44	GT 6864	Pulley
45	GT 6107	Spacer
46	GT 2054	Spring Washer
47	GT 104	Set Screw
48	GT 6619	Locating Peg
49	GT 589	Shield

Note: Standard hardware items are not shown.

Illustration 3



ENGINE & ELECTRICS

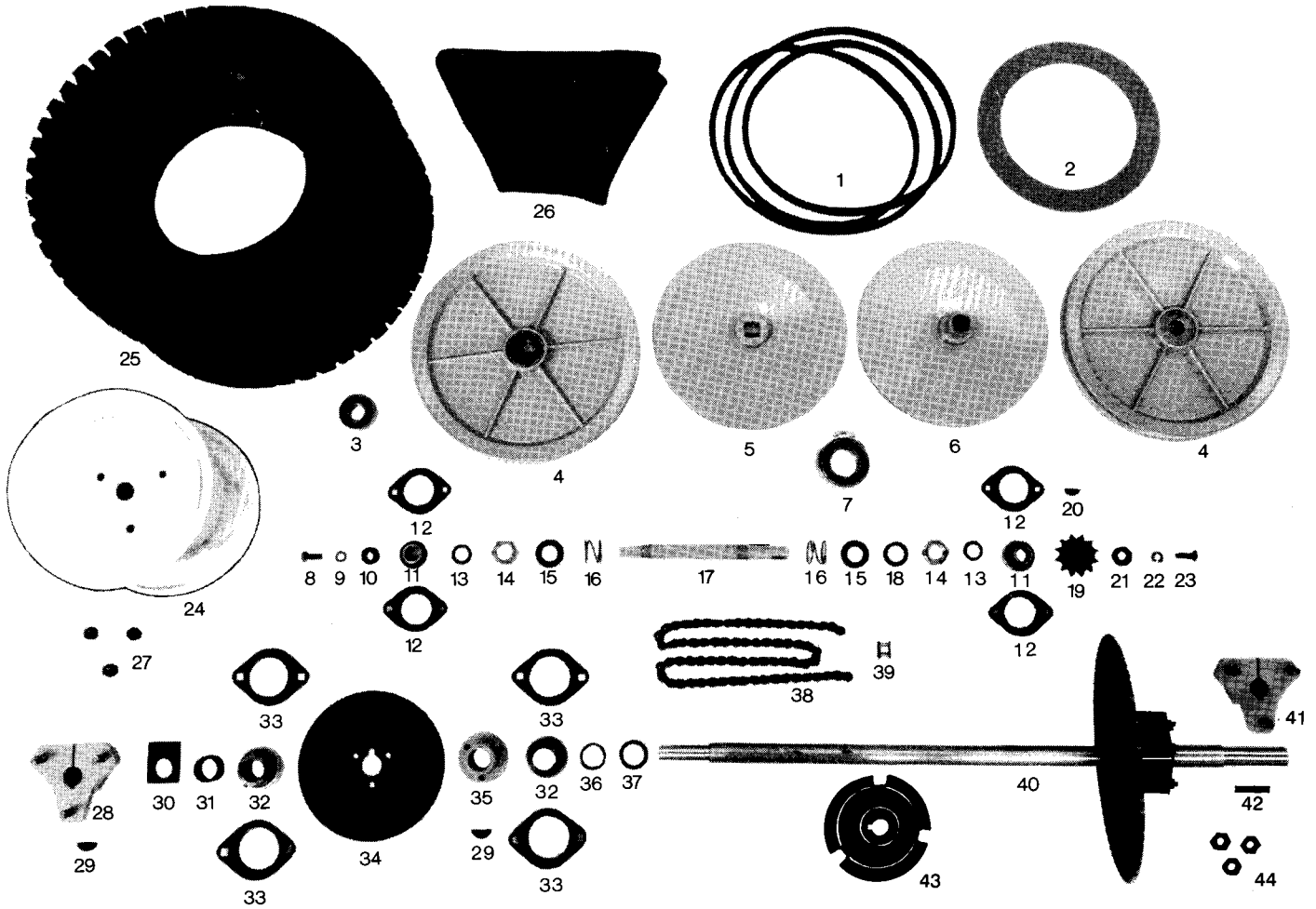
INDEX	PART No.	DESCRIPTION	INDEX	PART No.	DESCRIPTION
1	GT 6032	Engine Honda 13hp	24	GT 6487	Tank Support
1	GT 6020	Engine Briggs & Stratton 14hp	25	GT 6110	Exhaust Extension
2	GT 8083	Spacer	26	GT 6111	Exhaust Clamp
3	GT 6038	Pulley	27	GT 6563	Bracket — Muffler
4	GT 7413	Washer	28	GT 6567	Guard — Muffler
5	GT 8083	Spacer	29	GT 1915	Starter Switch
6	GT 1750	Washer	30	GT 1995	Starter Button
7	GT 2021	Spring Washer	31	GT 6084	Hour Meter
8	GT 1069	Bolt	32	GT 6054	Headlight
9	GT 1500	Key	33	GT 6503	Conduit
10	GT 520	Grub Screw	34	GT 6098	Clamp
11	GT 6871	Throttle Cable — Honda	35	GT 6079	Grommet
11	GT 6857	Throttle Cable — Briggs & Stratton	36	GT 7099	Battery
12	GT 1252	Cable Clamp	37	GT 6887	Cut Out Switch
13	GT 2026	Knob	38	GT 6090	Light Switch
14	GT 6351	Throttle Lever	39	GT 6128	Wiring Harness (Honda Engine Only)
15	GT 6036	V Belt — Engine	39	GT 6109	Wiring Harness (Briggs & Stratton Engine Only)
16	GT 6031	Cap — Fuel Tank			
17	GT 6490	Tank Strap			
18	GT 8058	Spring			
19	GT 6027	Fuel Tank			
20	GT 10044	Nut			
21	GT 10043	Tail			
22	GT 2024	Clamp			
23	GT 6553	Hose			

Briggs & Stratton Engine Only

Briggs & Stratton Engine Only

Note: Standard hardware items are not shown.

Illustration 4



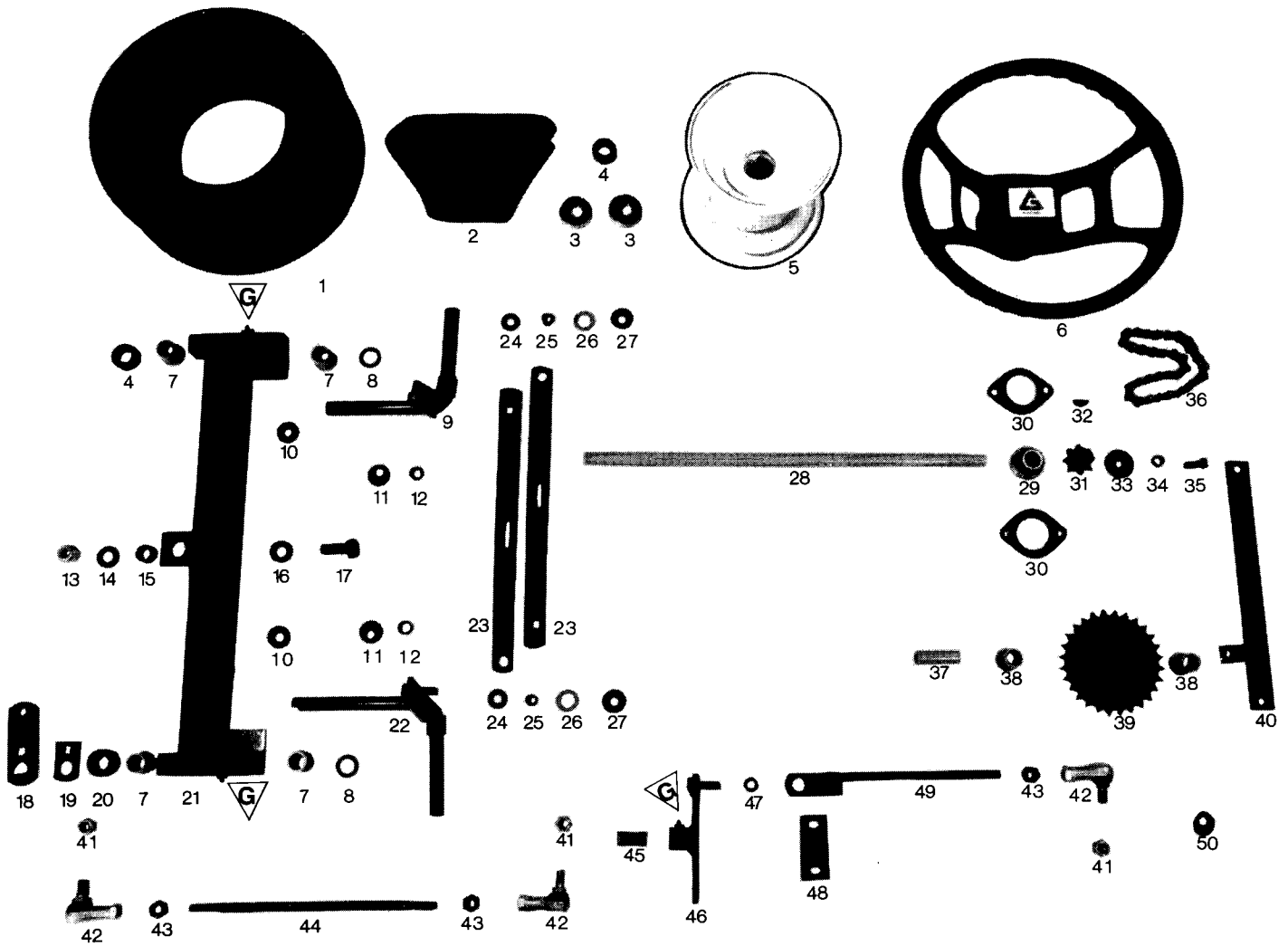
DRIVE CLUTCH & REAR AXLE

INDEX	PART No.	DESCRIPTION
1	GT 120	V Belt
2	GT 6012	Clutch Lining
3	GT 2206	Bearing
4	GT 6850	Pulley with Bearing (3)
5	GT 6855	L.H. Drive Plate
6	GT 6856	R.H. Drive Plate
7	GT 936	Bearing
	GT 6894	Plate & Bearing complete
8	GT 1301	Set Screw
9	GT 2052	Spring Washer
10	GT 7306	Washer
11	GT 7010	Bearing
12	GT 7017	Flangette Plates
13	GT 7304	Washer
14	GT 347	Nut
15	GT 7303	Washer
16	GT 357	Spring
17	GT 6034	Drive Shaft
18	GT 539	Shim
19	GT 6172	Sprocket 11 Tooth
20	GT 517	Key
21	GT 7311	Washer
22	GT 1135	Spring Washer
23	GT 2045	Set Screw
24	GT 1624	Rear Hub L.H.
24	GT 2916	Rear Hub R.H.

INDEX	PART No.	DESCRIPTION
25	GT 1203	Tyre
26	GT 1535	Tube
27	GT 2011	Wheel Nut Left Side
28	GT 1625	Flange L.H.
29	GT 516	Key
30	GT 7032	Clamp
31	GT 9013	Spacer
32	GT 390	Bearing
33	GT 7083	Flangette Plate
34	GT 6052	Brake Disc
35	GT 6048	Boss
36	GT 1501	Spacer
37	GT 7413	Washer
38	GT 6033	Roller Chain
39	GT 6063	Connecting Link
40	GT 2930	Rear Axle complete with diff.
41	GT 2917	Flange R.H.
42	GT 2918	Key
43	GT 2965	Differential Lock Unit
44	GT 2912	Wheel Nut Right Side

Note: Standard hardware items are not shown.

Illustration 5

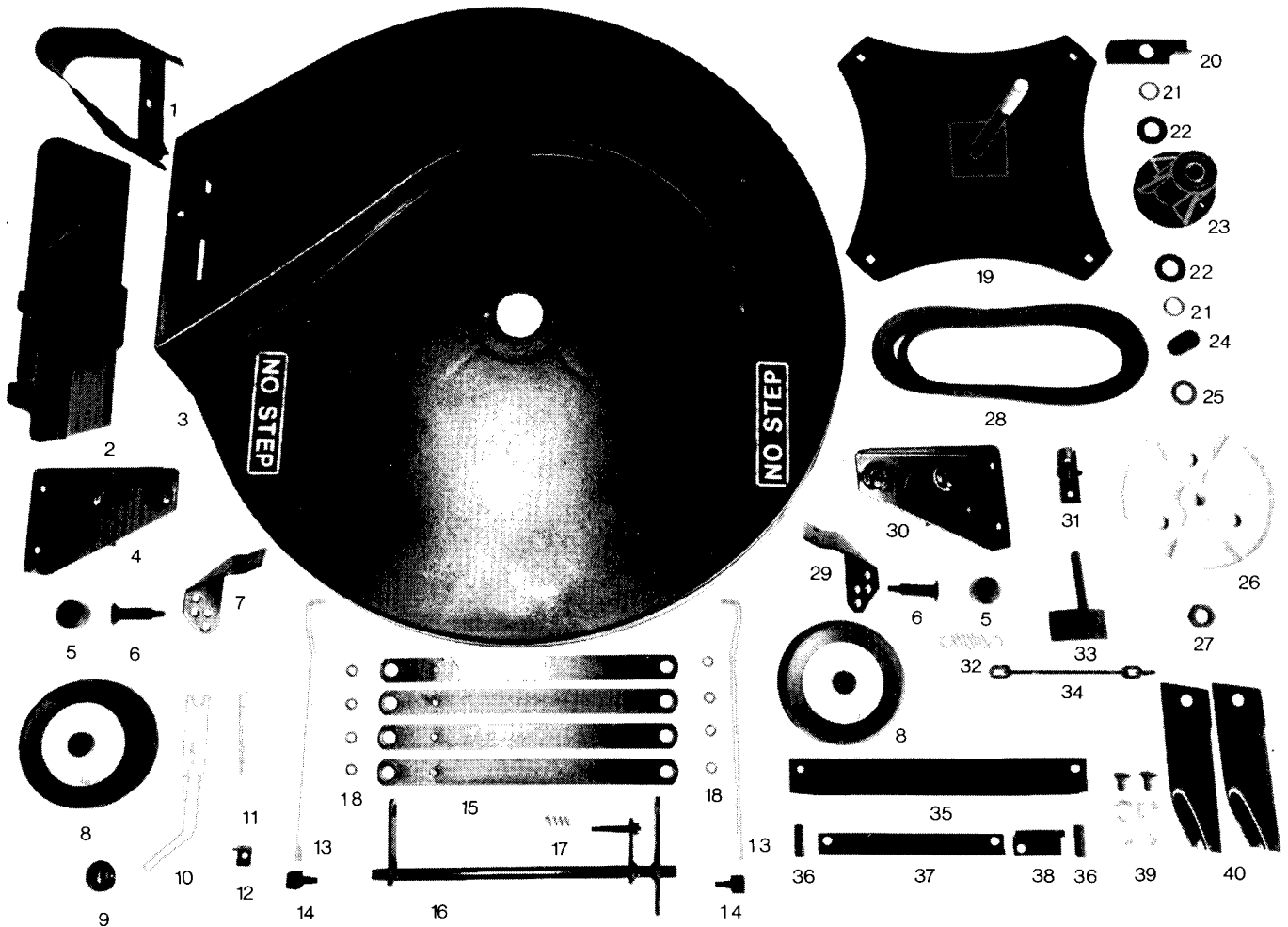


STEERING & FRONT AXLE

INDEX	PART No.	DESCRIPTION
1	GT 455	Tyre
2	GT 456	Tube
3	GT 396	Bearing
4	GT 7009	Collar
5	GT 7007	Wheel Hub
6	GT 1785	Steering Wheel Complete
7	GT 6056	Bush
8	GT 7304	Washer
9	GT 6623	King Pin R.H.
10	GT 9407	Washer
11	GT 8095	Steering Stops
12	GT 730	Bush
13	GT 2412	Nut
14	GT 23	Washer
15	GT 6057	Bush
16	GT 6061	Washer
17	GT 186	Bolt
18	GT 6361	Steering Arm
19	GT 7208	Locking Plate
20	GT 7009	Collar
21	GT 6402	Axle Beam
22	GT 6624	King Pin L.H.
23	GT 6622	Tie Rod
24	GT 10038	Washer
25	GT 10037	Bush

INDEX	PART No.	DESCRIPTION
26	GT 534	Seal
27	GT 10488	Seal Retainer
28	GT 6115	Steering Shaft
29	GT 2207	Bearing
30	GT 7017	Flangette Plate
31	GT 6114	Sprocket
32	GT 518	Key
33	GT 6355	Washer
34	GT 1135	Lock Washer
35	GT 1052	Bolt
36	GT 6876	Roller Chain Complete
37	GT 6113	Sleeve
38	GT 6056	Bush
39	GT 6116	Sprocket
40	GT 6585	Support Bracket
41	GT 2090	Nut
42	GT 6044	Tie Rod End
43	GT 2406	Nut
44	GT 6058	Drag Link
45	GT 6072	Bush
46	GT 6625	Steering Link
47	GT 730	Bush
48	GT 6482	Bracket
49	GT 6353	Steering Rod
50	GT 6586	L.H. Steering Stop

Illustration 6



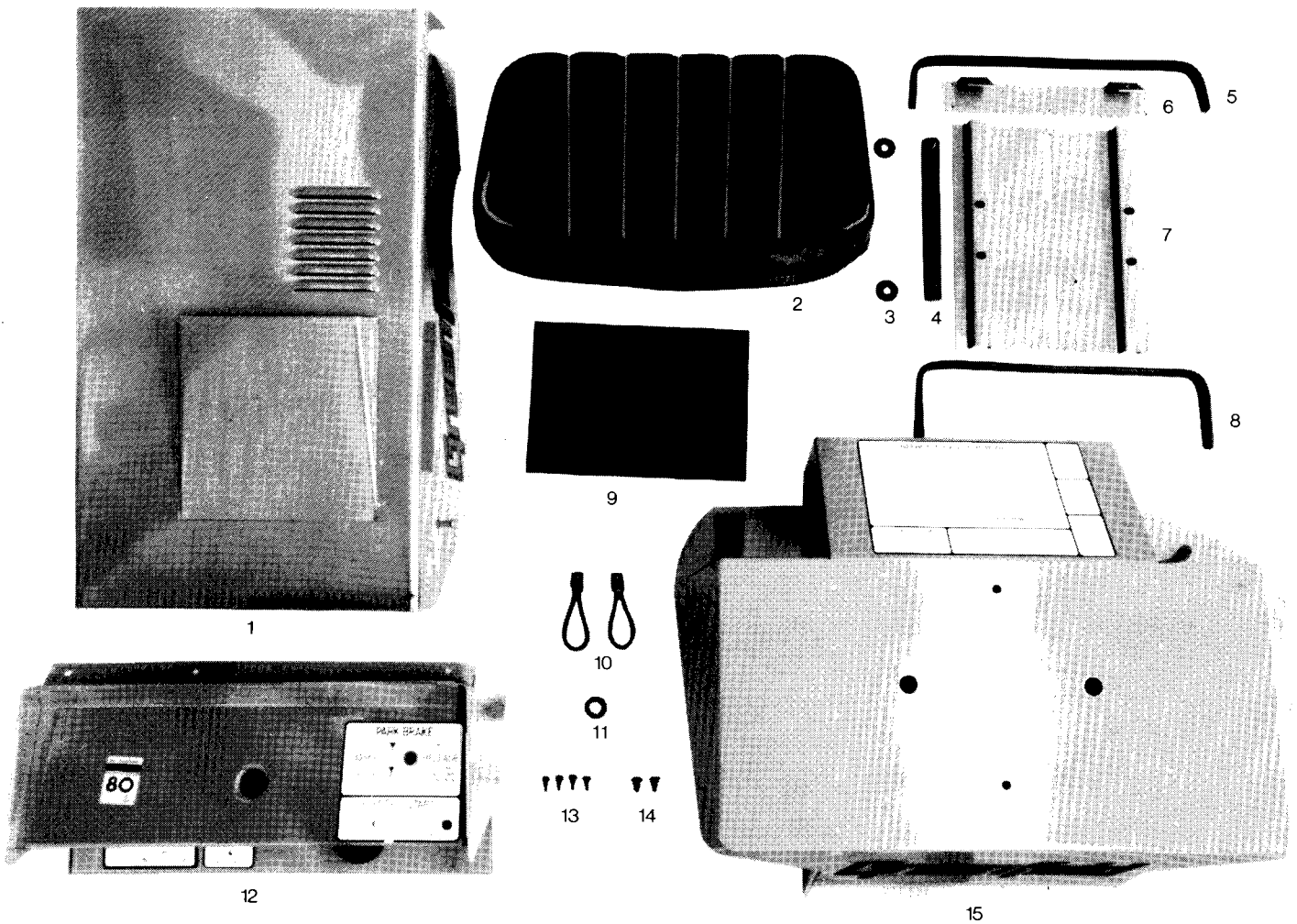
CUTTER DECK

INDEX	PART No.	DESCRIPTION
1	GT 6631	Deck Skid
2	GT 8125	Stone Guard
3	GT 6078	Cutter Deck
4	GT 6522	L.H. Side Plate
5	GT 1930	Wheel Cap
6	GT 1768	Shaft
7	GT 8210	L.H. Bracket
8	GT 1638	Wheel Assembly
9	GT 1565	Knob
10	GT 6309	Lever
11	GT 6030	Spring
12	GT 6321	Bracket
13	GT 6328	Link — Rod
14	GT 6028	Block — Sliding
15	GT 6319	Link — Bar
16	GT 6304	Lifting Shaft Assembly
17	GT 7071	Spring
18	GT 730	Bush
19	GT 6409	Disc and Spindle
20	GT 8205	Bearing Wiper

INDEX	PART No.	DESCRIPTION
21	GT 635	Spacer
22	GT 589	Shield
23	GT 7988	Spindle Housing Unit
24	GT 6097	Spacer
25	GT 7303	Washer
26	GT 6075	Pulley
27	GT 2003	Nut
28	GT 6037	V Belt — Cutters
29	GT 8211	R.H. Bracket
30	GT 6523	R.H. Side Plate
31	GT 6483	Bracket
32	GT 6124	Spring
33	GT 6870	Cutter Brake
34	GT 6899	Linkage
35	GT 6412	Support
36	GT 6494	Spacer
37	GT 6411	Belt Guide
38	GT 6413	Guide
39	GT 2110	Blade Bolt Set
40	GT 2104	Blade

Note: Standard hardware items are not shown.

Illustration 7



**BODYWORK & SEAT
COVERS & SEAT**

INDEX	PART No.	DESCRIPTION
1	GT 6872	Bonnet 13-32
1	GT 6888	Bonnet 14-32
2	GT 8064	Seat
3	GT 1025	Washer
4	GT 6502	Slide Bar
5	GT 6554	Pinchweld — Bonnet
6	GT 6431	Bracket
7	GT 6424	Seat Base
8	GT 6555	Pinchweld — Cowl
9	GT 6570	Floor Mat
10	GT 7015	Strap
11	GT 1766	Bush
12	GT 6873	Steering Cowl 13-32
12	GT 6889	Steering Cowl 14-32
13	GT 6094	Rubber Buffer
14	GT 1760	Nylon Button
15	GT 6874	Rear Cover 13-32
15	GT 6890	Rear Cover 14-32

Note: Standard hardware items are not shown.