



SP105

Greenfield

"Excellence through Innovation"



MODEL

EVOLUTION 3 Mk II

13 / 32 DELUXE

13 / 32 STANDARD

11.5 / 30



Made in
AUSTRALIA
Since 1966

OWNER'S MANUAL

INSTRUCTIONS AND SPARE PARTS

Greenfield Products Pty Ltd

172 Ingram Rd, Acacia Ridge, Qld. Australia 4110

Fax (07) 3441161 Phone (07) 3456100

Contents

Safety Instructions		2
Operating Instructions		4
Differential Instructions		6
Maintenance	General	7
Maintenance	Blades and Belts	8
Maintenance	Chains, Steering and Parking Brake	12
Electrical Circuits		15
Spare Parts	Linkages	
	Cutter Clutch and Drive Clutch	16
	Linkages	
	Brake, Height Adjust and Notch Bar	17
	Engine and Electrics	18
	Drive Clutch and Rear Axle	19
	Steering and Front Axle	20
	Cutter Deck	21
	Body Work and Seat	22
Service Record		23
Guarantee		24
Other Greenfield Products		25



Greenfield 

Australian Made Since 1966

© Greenfield Products Pty Ltd

All details are correct at the time of printing but are subject to change without notice.

Evolution III

Thank you for buying an Australian made **Greenfield** mini tractor. Follow the manufacturer's operating and maintenance instructions and many years of excellent trouble free service can be expected.

Before operating the mower read the owners manual carefully. Do not allow children or any person unfamiliar with the safe operating procedure to operate this mower. Your Greenfield mower has been designed to meet stringent safety standards - but we remind you that a mower is a cutting device - **used incorrectly it could cause personal injury.**

Safety Instructions

1. Do not carry passengers.
2. Know your controls. Read the operating instructions carefully. Learn how to stop the mower and the engine quickly in an emergency.
3. Do not mow whilst people, especially children or pets are in the mowing area.
4. Make sure the area to be mown is clear of sticks, stones, bottles, bones, wire and other debris which could be thrown by the blades.
5. Do not operate the machine without first inspecting the blades, blade bolts and blade holder for wear or damage. **Damaged blades and worn bolts are major hazards.** Always replace blades and blade bolts in sets to preserve balance. Replace worn or damaged parts with **genuine Greenfield** replacement parts only. N.B. Use of inferior non-genuine service parts on your Greenfield mower could result in costly damage and even personal injury. Refer "Maintenance Instructions", for replacement part numbers and fitting instructions.
6. Before using, check that the grass catcher, safety switches and guards provided by the manufacturer are operating properly and fitted securely. Regularly check all the components on the mower to ensure the machine is in a safe operating condition.
7. Never mow while barefoot or wearing open sandals or thongs. Wear long trousers and heavy shoes. It is also important to wear suitable eye protection.
8. A mower operator should be in good physical and mental health and not under the influence of any drug or alcohol which might impair vision, co-ordination or judgement.
9. Replace worn or faulty exhaust mufflers.
10. Keep the engine free of grass, leaves or excessive grease. These can be a fire hazard.
11. Refuel outdoors only. Do not smoke while fuelling engine. Never remove the cap of the fuel tank or add petrol while the engine is running or if the engine is hot, allow it to cool. Remove fuel cap slowly relieve any tank pressure. Do not overfill the fuel tank. If petrol is spilled do not attempt to start the engine but move the machine away from the area of the spill and avoid creating any source of ignition until petrol vapours have dissipated.
12. Check for fuel leaks, while refuelling or using the mower. If a fuel leak is detected, do not start the engine until the fuel leak is fixed and the spilled fuel is wiped away.
13. Do not operate the engine in a confined space where the poisonous exhaust fumes (carbon monoxide) can collect.
14. Always disengage the cutting blades from the operator's seat before starting or stopping the engine.
15. Always mount or dismount from the mower from the opposite side to the discharge chute. Always stop the engine before dismounting.

16. Exercise extreme caution when on slopes. Reduce speed particularly when making sharp turns to prevent overturning or loss of control. Do not stop or start suddenly when mowing uphill or downhill.
17. Never operate a ride-on mower across a slope steeper than what you would comfortably drive a car across.
18. Stay alert for holes in the terrain and other hidden hazards.
19. Before crossing paths, driveways or any other area foreign to mowers, reduce engine speed, disengage cutting blades and lift cutting attachment to maximum height. Do not drive over obstacles.
20. Watch out for traffic when crossing or operating the mower near roadways. Always mow with the safety grass deflector properly fitted.
21. When mowing, never direct discharge of material toward bystanders nor allow anyone near the machine while in operation.
22. Before leaving the operator's position -
 - (A) Disengage the cutting blades.
 - (B) Apply the parking brake.
 - (C) Stop the engine and remove the starter button or key (whichever is fitted).
23. Disengage the drive to the cutting blades and stop the engine -
 - (A) Before refuelling
 - (B) Before removing grass catcher or any attachment.
 - (C) Before making a height adjustment unless adjustment is being made from the operator's position.
 - (D) Before clearing blockages.
 - (E) Before inspecting, cleaning or working on the mower.
 - (F) After striking a foreign object (inspect the mower for damage and make necessary repairs before restarting and operating the machine).
 - (G) If the machine starts to vibrate abnormally (check immediately).
24. Disengage drive to the cutting blades when not in use or in transporting.
25. Do not over-speed the engine or alter governor settings. Excessive speed is dangerous and shortens the mower's life.
26. Use care when pulling loads or using attachments.
 - (A) Use only the approved drawbar hitch point.
 - (B) Limit loads to those you can safely control.
 - (C) Do not turn sharply. Use care when backing up.
27. Store the mower in a well ventilated room away from naked flames such as may be found in some hot water heaters.
28. Do not lend or sell the mower without the owner's manual.
29. **Warning** - Remove spark plug lead to avoid accidental starting before attempting any maintenance or inspection of the mower.

Operating Instructions

Before Starting

Fuel

Top with clean regular **Unleaded** petrol only. **Don't Over Fill.** Make sure the petrol is free from impurities, particularly water. The petrol tank is located inside the engine compartment of your Greenfield. Raise the bonnet for access. Do not use stale petrol in your mower, add clean fresh fuel only.

Engine Oil

Check oil level by positioning the mower on level ground, remove the dipstick and wipe clean, replace the dipstick screwing correctly into position. Remove again and sight the oil level. Fill to the full mark. Do not Overfill. Dipstick must be firmly in place when the engine is running. Refer to the "CRANKCASE LUBRICATION" in the maintenance section of this manual for oil recommendations.

Tyres

Inflate to the pressure indicated on the tyres. Usually 20psi (140KPa) on the front and 10psi (70KPa) on the rear. Don't over inflate.

TO START

Apply park brake, disengage blade clutch (Cutters Out). Turn on fuel tap (if fitted). For cold starting set throttle control to "Choke". Turn starter key or push starter button (whichever is fitted) for ten (10) seconds, maximum to avoid overheating of starter motor. If engine does not start it may be flooded. Set throttle control half way then attempt to start again. Make sure to return the key to the RUN position after the engine starts or each time you attempt to start it.

Do not allow children or any person unfamiliar with the safe operating procedure to use this mower. Know your controls. Read the following instructions carefully. Learn how to stop the mower and the engine quickly in an emergency.

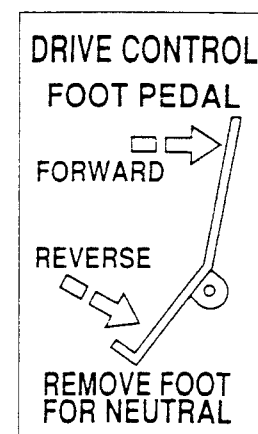
Important - This Evolution Model Greenfield mower is fitted with a safety "cut-out" switch activated by the seat. The operator must be seated to start the engine and remain seated while operating the mower. If you don't remain seated the engine will stop. This safety switch must be kept functional for your protection. Adjustment is easily done if ever necessary.

TO STOP

Reduce engine speed using the throttle control, disengage cutter blades (cutters out). The cutter blades should come to a complete stop in approximately 7 seconds (refer Cutter Belt Adjustment). Apply the park brake and allow engine to cool down by idling approximately 20 seconds. Set throttle control to "STOP" position to switch engine off. Then, and only then, dismount from the driver's seat. Turn fuel tap off (if fitted).

TO OPERATE

A simple pivoted foot pedal controls forward, neutral and reverse. Apply toe pressure to move forward, heel pressure to move in reverse. Increased toe or heel pressure provides speed variation in forward or reverse respectively. Allow pedal to centralise for neutral. The drive pedal can also be used as a brake by applying toe or heel pressure opposite to the directional movement of the mower. Sudden or violent directional changes and/or wheel spinning must be avoided.



Cutting Height

The height adjustment lever located to the front right of the rear cover enables the operator to select the desired cutting height. To alter the cutting height move the lever to the right then shift upwards or downwards to select the setting then release to lock in position. An indicator panel displays the setting. Keep the indicator in the green band for maximum belt life.

Blade Clutch

The blade clutch lever is located on the cutter deck alongside the right hand side running board. To engage the cutting blades, move this lever fully rearward, then away from the running board to lock the clutch lever into the engaged position. To disengage the cutting blades, pull the lever towards the machine and gradually move the lever to the "OUT" position. Always disconnect blades (OUT) before dismounting and wait for the blades to stop. **NEVER USE WITHOUT SAFETY DEFLECTOR FITTED.**

Seat

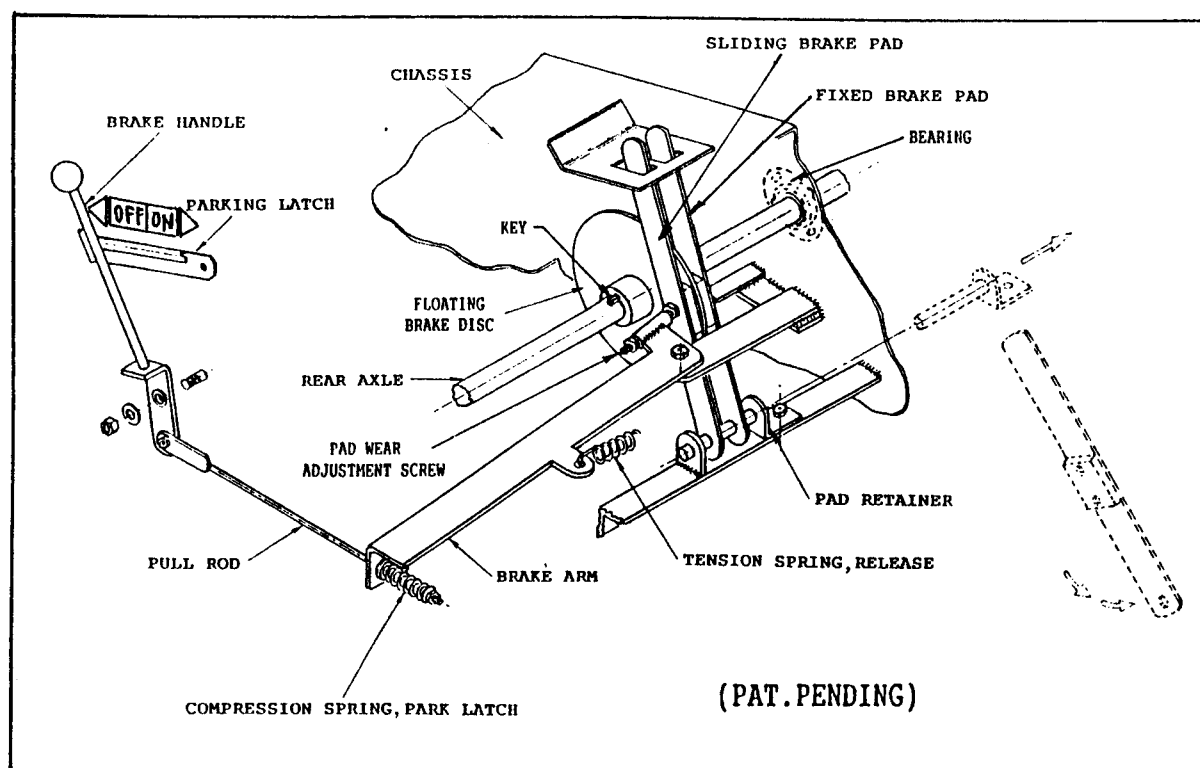
The operator's seat is adjustable front to rear. To adjust, hinge seat forward, loosen four seat securing bolts, move seat to position required and retighten bolts. Oil pivots occasionally.

Disc Brake

The park brake handle is located in front of the left side rear mudguard. This handle has two positions, "OFF" and "ON". To engage the park brake, lift the handle fully up and engage the handle into the parking latch. To disengage, lift the handle up and out of the parking latch and lower to the "OFF" position. this brake can also be used for stopping the mower in an emergency. **DO NOT DRIVE THE MOWER WITH THE BRAKE IN THE "ON" POSITION. YOU WILL WEAR OUT THE LINING.**

Check effectiveness of the parking brake by its ability to stop the tractor mower by applying the brake to the "ON" position while it is rolling forward with the foot pedal in the neutral position.

Should the parking brake need adjusting, Refer to "BRAKE PAD WEAR ADJUSTMENT" on page 14 of this manual.



Greenfield Differential

Instructions and Hints

The Greenfield Evolution mower features a unique and patented new type of differential. This differential offers the operator the option of the full differential action of the rear wheels for improved steering and a tight turning circle, whilst eliminating rear wheel scuffing on fine lawns. Most people will run their Greenfield with the differential operating all the time. This is the preferred method of operation and is accomplished by keeping the handle hooked over the end of the rear axle (see "A" below).

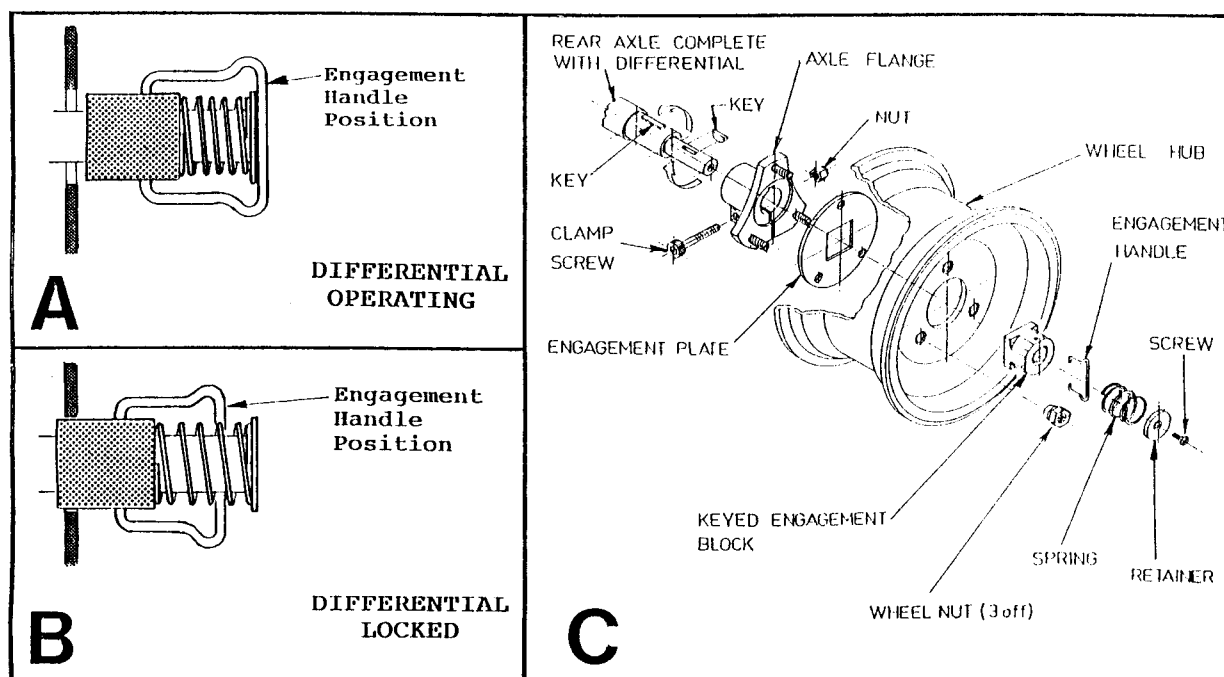
Important: Do not attempt to engage or disengage the differential lock from the operator's seat or while the engine is running.

In some situations, such as extremely wet areas or if hill climbing, you may choose to lock out the differential action for improved traction. You accomplish this by simply releasing the handle from the end of the rear axle. The lock will automatically engage when released (See "B" below).

To return the differential to the operating position (See "A" below) turn the steering wheel either to the left or right; then rock the mower back and forth while simultaneously pulling out the engagement handle and hook it over the end of the rear axle. Lubricate if necessary.

If the left side rear wheel is removed, make sure the keyed engagement block slides freely into the engagement plate square before the final tightening of the wheel nuts.

Greenfield differentials are fully lubricated and sealed for life at the factory. If the unlikely event that your differential needs service, it must be returned to Greenfield intact. During the warranty period service and spares for the differential are only available through the factory. **Differentials that have been tampered with or dismantled will NOT be considered for warranty.** Normal warranty is 12 months for private use and 3 months for commercial use. Extended warranty is available for up to 3 years for private use or 6 months for commercial use. See your Greenfield dealer for details. The factory gives a same day service if a differential is returned.



MAINTENANCE

Warning: Remove the spark plug lead to avoid accidental starting BEFORE attempting any maintenance or inspection of the mower.

Crankcase Lubrication

Change engine oil after the first 5 hours of operation then every 6 months or 25 working hours, whichever comes first. Change more often in heavy work or dusty conditions. Drain engine oil whilst engine is warm then replace with a high quality detergent oil classified for service SF/CC by the A.P.I. such as Briggs & Stratton "Warranty Certified" SAE 30 oil. available from Briggs & Stratton Service Dealers.

Fill to full mark indicated on the dipstick. Do not overfill. To check oil level, position the mower on level ground. Remove the dipstick and wipe clean. Replace dipstick screwing correctly into position. Remove again and sight the oil level. The Dipstick must be firmly in place when the engine is running. Refer to the engine manufactures operating booklet for oil recommendations.

Air Filter

Service the air filter as per the engine manufactures booklet. Clean or replace more often in dusty conditions. Never operate the engine without the air filter correctly and securely fitted - rapid and expensive wear will occur. Because the air cleaner is in a clean air zone, less servicing is required.

Cooling System

Remove the blower housing and clean out the grass and debris to prevent engine overheating. Refer to engine manufacturer's booklet.

Battery

Top with distilled water to correct level as required. If externally charging, care is needed. TRICKLE CHARGE ONLY to avoid battery damage. The maximum charge is 2 AMPS per hour.

Warning: Do not let the battery discharge during winter. Trickle charge regularly or use the mower at least once a month to avoid damage to the plates.

Wheels

The rear nuts should be re-tensioned after the first 5 hours of operation to 78 Nm (58 ft.lbs) on 11.5/30 model, 100 Nm (74 ft.lbs) on 13/32 model and 44 Nm (33 ft.lbs) on 13/32 deluxe model, then regularly with your preventative maintenance checks.

Tyres

Inflate to pressure indicated on the tyres. Usually 20psi (140KPa) on the front and 10 psi (70KPa) on the rear. Do not over inflate.

Cleaning

Never wash your Greenfield with a high pressure wash gun. You could blast water and dirt past the seals in the bearings causing premature bearing failures and rusted pivot points.

- * Never wash your Greenfield immediately after use. The quenching contraction effect from hosing off the machine when it's at operating temperature could also draw water and dirt into the bearings and cause premature bearing failures.
- * The best way to clean your Greenfield is to use an air hose to blow the loose grass, etc. from around pulleys, belts and the top of the cutter deck. Wash the exterior with a sponge and bucket, then rinse off with a hose and wipe it down the same as you would your car. For maximum machine life, do not spray water on the pulley's and bearings. Recoil all pivots after wash.
- * Allow your Greenfield to cool after use then clean off all grass and other debris before storing. Sticks, stones or an accumulation of grass and other debris will damage belts and fracture pulleys if they go through between the pulley and belt. So keep the cutter deck clear.

BLADES AND BELTS

Belts

Greenfield "V" belts are self-adjusting although the cutter belt may need occasional adjustment within its tensioning range (see page 11) Inspect the "V" belts regularly and replace if damaged. Part Number for V belts are -

Drive V Belts GT 14004
Cutter V Belt GT 18005

Important - For long service life, **use only Genuine Greenfield branded V belts**, refuse substitutes.

Blades

Check condition of blades, blade bolts and blade holder. Replace if damaged or worn. Worn or damaged blades and bolts are major hazards. Always replace worn or damaged blades and bolts in sets to preserve balance. Use only Genuine Greenfield branded replacement parts. Use of inferior non-genuine replacement parts on your Greenfield could result in costly damage or even personal injury. Part Numbers for Blades and Bolts are:

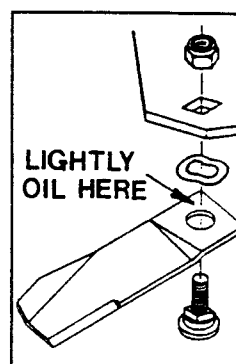
Cutter Blade and Bolt Set GT 2139
Cutter Blade and Nut Set GT 2138
Bolt and Nut Set GT 2110

To fit new blades refer to illustration A.

Tighten the blade bolt nuts firmly. Correct torque is 44Nm. (32ft.lbs). Blades must be free to move but not loose. Lightly oil the blade pivot point before fitting.

Warning: Always remove the spark plug lead to avoid accidental starting.

Illustration A



Chassis Lubrication

Your Evolution 3 MkII Greenfield mower has 3 greasing points. A grease nipple is fitted to each king pin housing in the front axle beam, the third grease nipple is fitted to the steering link idler which is located in the centre of the machine close behind the front axle beam and accessible from under the chassis. Grease these locations every 6 months or 50 operating hours with a quality No 2 lithium base grease or equivalent. It is recommended your grease gun be fitted with a flexible hose. All other exposed pivoting joints, lever points and slides are to be lubricated with engine oil.

The rear drive chain should be removed, thoroughly cleaned in kerosene and soaked in a quality chain oil every 50 operating hours, more often if hosed. Refit drive chain and adjust as described in "REAR DRIVE CHAIN ADJUSTMENT" in this manual. If the rear drive chain is cleaned and oiled regularly, a much longer service life can be expected from the chain and sprockets.

TO REMOVE REAR DRIVE BELT

1. Remove the spark plug lead to prevent accidental starting.
2. Lift up the seat and disconnect the wire to the seat cut out switch by pulling apart the spade connector on the blue wire near the top of the battery. Remove the rear cover by undoing the star knob under the seat and removing the rear cover and seat assembly.
3. Set the blade height to the "LOW" position.
4. Swing back the steady bracket supporting the rear clutch link (refer illustration C).
5. Remove the split pin from the back end of the clutch yoke. Lift off the rear clutch link and swing rearward (refer illustration D).
6. With the spring release hook tool provided (see illustration E), remove the tension spring from the idler pulley notch bar.
7. Release the notch bar leaf spring by inserting a flat screwdriver through the slot in the bracket above the leaf spring. Lever the leaf spring clear of the notch bar and hold in a released position allowing the idler pulley to slide freely rearward to permit belt removal. (refer illustration E).
8. To remove the drive V belt from the engine pulley the cutter V belt must be removed. Follow steps No. 1, 2 and 3 of "To remove cutter V belt" instructions. Now remove the drive V belt from the engine pulley.
9. Lift the drive V belt off both flat idler pulleys and remove the belt through the opening at the rear clutch link.

Illustration C

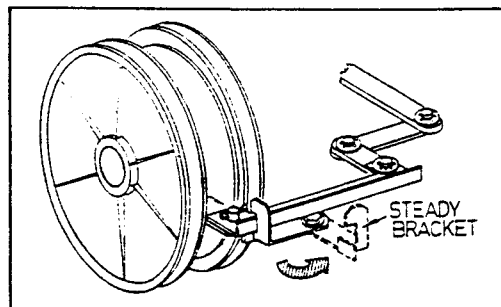


Illustration D

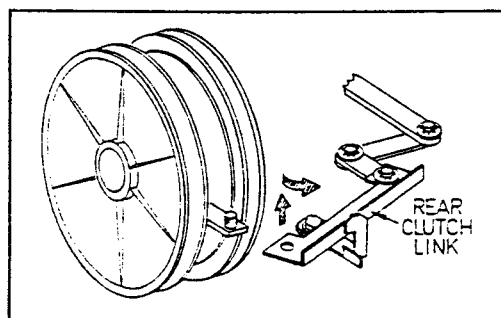
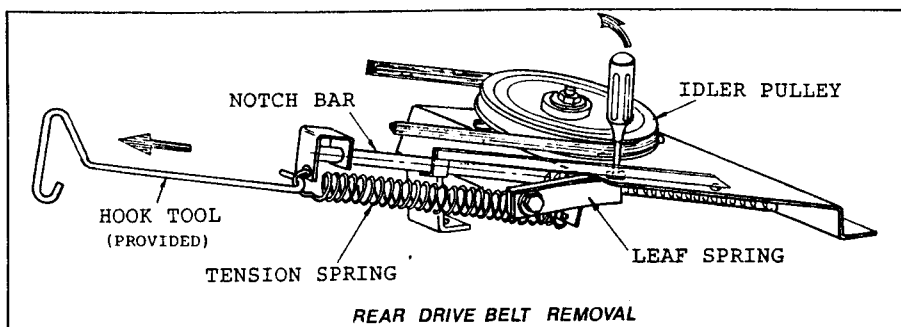


Illustration E



TO REPLACE REAR DRIVE V BELT

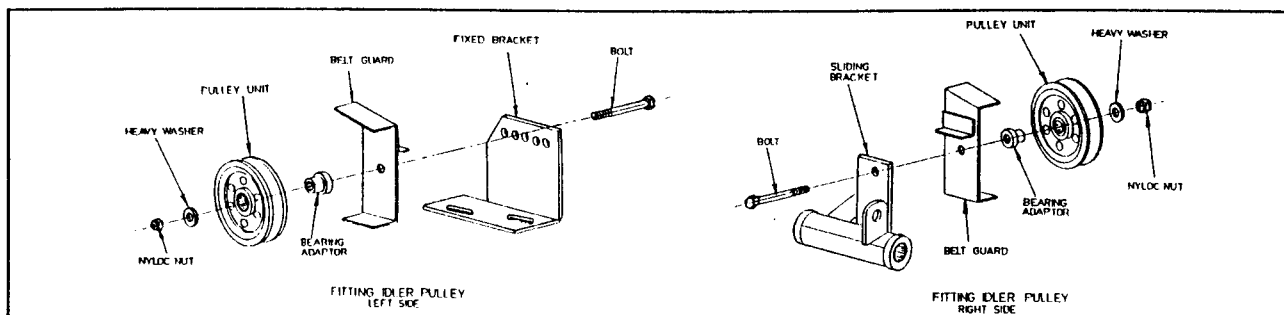
1. Feed the belt down the back of the clutch pulleys and onto the top groove of the engine pulley. If the cutter V belt is in position on the engine pulley, remove the belt by following steps No 1, 2 and 3 of "To remove cutter V belt" instructions.
2. Fit the belt into both clutch pulleys then into the idler pulley on the notch bar. This pulley will need to be in the fully rearward position. Lubricate the slide and notch bar with grease.
3. Fit the belt over both flat idler pulleys. The pulleys run on the back of the belt.
4. Replace the notch bar tension spring using the hook tool.
5. Replace the rear clutch link and the split pin.

6. Swing the steady bracket forward to support the rear clutch link.
7. Refit the cutter V belt into the bottom groove of the engine pulley by following step No.2 of "To replace cutter V belt" instructions.
8. Replace the rear cover and reconnect the wire th the safety cut out switch.
9. Remove spark plug lead.

To Remove Cutter V Belt

1. Remove the spark plug lead to prevent accidental starting.
2. Lower the blade height th the "LOW" position and disengage the cutters, blade clutch "OUT".
3. Remove the V belt from the engine pulley by manoeuvring the belt down between the pulley and belt guide pins.
4. Remove the fixed clutch pulley and belt guide and the sliding clutch pulley and belt guide located on the cutter deck (see illustration F).
5. Remove the belt guide from the cutter pulley by loosening the nuts on each side and removing the nut at the front of the belt guide.
6. Remove the belt from the machine.

illustration F



To Replace Cutter V Belt

1. Refit the idler pulleys to the mounting brackets in this order - Insert the bolt through the bracket. Position the belt guard over the bolt against the bracket with a guard wing at the top, bottom and rear. The bearing adaptor, large end first then slips over the bolt. While holding the V belt into the pulley groove, slide the pulley over the bolt and onto the bearing adaptor.

With the wings of the guard over the belt and pulley, fit the thick flat washer and nyloc nut (see illustration F).

Important - Before starting, check that pulleys turn freely inside belt guards with belt disengaged and not jammed.

2. Fit the belt th the bottom groove of the engine pulley ensuring belt is inside belt guard pins then to the cutter pulley.
3. Replace the belt guide around the cutter pulley and tighten the nyloc nuts.
4. Replace the spark plug lead.

From the operator's seat, run engine and engage cutters to check V belt operation. (refer cutter belt adjustment page 11).

Note - A belt run-in period is required as follows. With the height adjusting lever in the green band (mid height position) engage cutter blades and run for a minimum of ten minutes at medium engine speed. Ideally, a total run-in time would be approximately one hour, during which time you can cut grass, on mid height position.

Cutter Belt Adjustment

Warning: Remove the spark plug lead to avoid accidental starting **BEFORE** attempting any maintenance or inspection of the mower.

With the cutter clutch lever in the "**OUT**" position (disengaged) the cutter belt should be sufficiently disengaged to allow the cutter blades to come to a complete stop in approximately 7 seconds. The correct amount of belt slack and the efficient operation of the cutter brake control this stopping time. The spring loaded clutch idler pulley maintains the correct belt tension when the blade clutch lever is in the "Engaged" position.

The left side cutter belt idler pulley can be adjusted to allow for belt stretch. The first adjustment should be checked after approximately 5 hours of operation with further checks after approximately 50 hours. Adjust if necessary.

This left side pulley bracket has five bolt hole positions available plus a sliding adjustable base.

To adjust belt, loosen two nyloc nuts on the pulley bracket base and slide bracket rearwards. Retighten nuts. This should suffice unless some extraordinary wear has occurred. If further adjustment is required you can relocate the pulley to the next hole.

The manufacturer recommends all Greenfields be returned to your authorised Greenfield dealer for normal servicing i.e. oil changes, air filters etc. at the times indicated in the maintenance section and by the engine manufacturer. The manufacturer also recommends a maintenance and safety inspection be performed every 6 months or every 50 working hours by your authorised Greenfield dealer to comply with the conditions for both standard and extended warranty offered by the manufacturer, refer to warranty leaflet.

CHAINS AND BRAKES

Steering Chain Adjustment

1. Remove spark plug lead to prevent accidental starting.
2. Lower the cutter deck to "LOW" position.
3. Working from under the bonnet at the rear of the engine from the right hand side, Loosen both nyloc nuts on the steering shaft bearing flangette plates and the nyloc nut on the locking tab. See illustration "G"
4. With fingers only, push the steering shaft to the left side of the machine to tighten the steering chain, remove all slackness from the chain. Do not overtighten
5. Re-tension the two nuts on the bearing plate and the nut on the locking tab.
6. Replace spark plug lead.

Illustration G

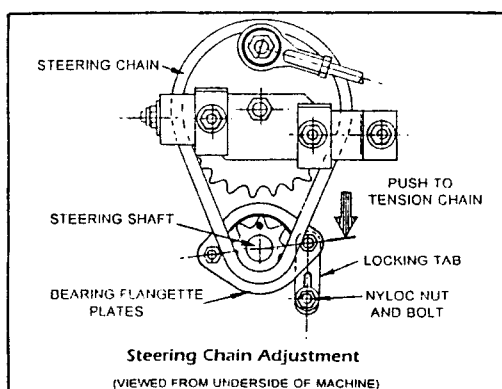


Illustration H

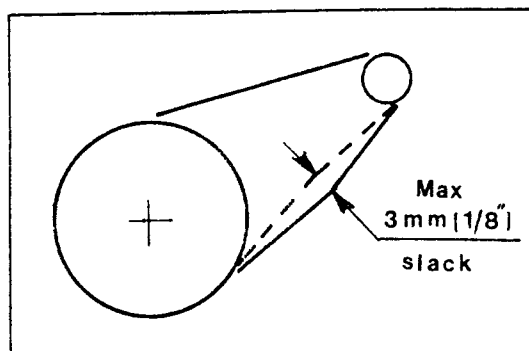
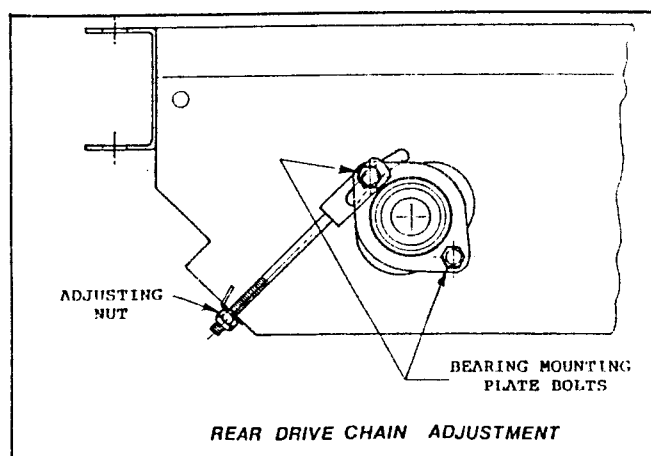


Illustration J



REAR DRIVE CHAIN ADJUSTMENT

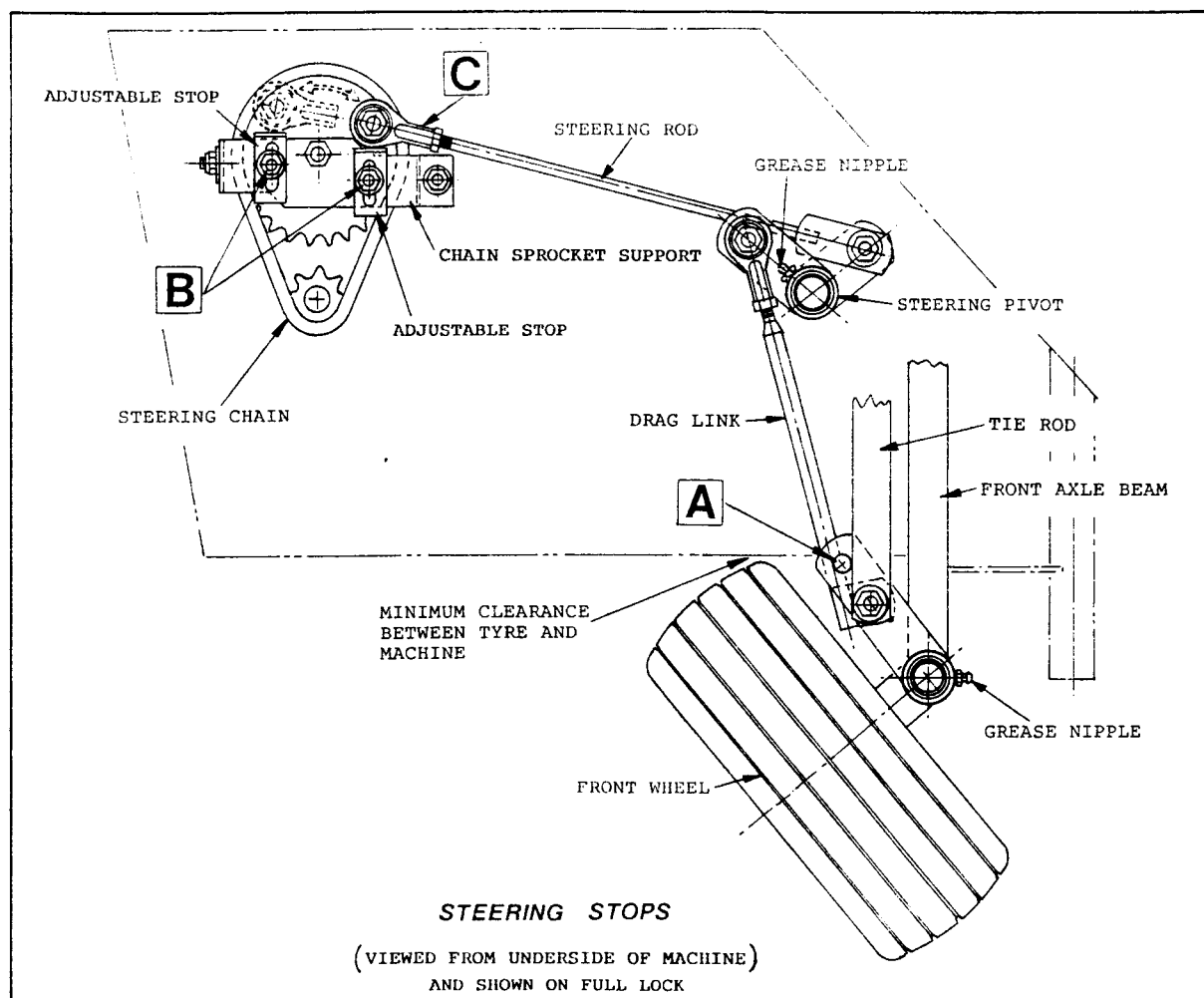
1. Remove spark plug lead to prevent accidental starting.
2. Lift up seat and disconnect the wire to the seat cut out switch by pulling apart the spade connector on the blue wire near the top of the battery. Remove the rear cover by undoing the star knob under the seat base and removing the rear cover and seat assembly.
3. Raise and block up rear of mower. Remove rear wheels for access to flange bearings.
4. Loosen the two bearing mounting plates on each side. See illustration "J"
5. Adjust the chain by turning the adjusting nuts positioned at the bottom of the rear axle side plates clockwise to tighten the chain. It is very important to adjust each side evenly so the rear axle remains parallel to the mower chassis and the sprockets are in alignment. It is suggested that you turn each nut no more than a quarter of a turn at a time alternating between the two until the chain has 3mm slack as shown in illustration "H". Do not overtighten the chain.
6. Re-tension rear axle flange bearing mounting plate bolts.
7. Re-fit and tension rear wheels to 78 Nm (58 ft.lbs) on 11.5/30 model, 100 Nm (74 ft.lbs) on 13/32 model and 44 Nm (33 ft.lbs) on 13/32 Deluxe model.
8. Replace rear cover, and reconnect the blue wire to the safety switch and Replace spark plug lead .

STEERING STOP ADJUSTMENT

The steering stops "B" are readily seen and accessible from under the right hand side of the chassis with the cutter deck in the "LOW" position. Adjustments should not be necessary, unless the steering has been damaged.

1. Remove spark plug lead to prevent accidental starting.
2. Check the front wheel alignment has 0-1.5mm toe-in. Correct if necessary by resetting the adjustable tie rod. Toe-in must be correct before any adjustments are made.
3. Loosen the nuts retaining the two steering stops on the chain sprocket support (refer illustration K, item B).
4. Turn the steering wheel full lock to the left till the left hand king pin is hard against the fixed stop "A".
5. Slide the left side stop on the chain wheel support until it hits against the tie rod end "C". Retighten the locking nut "B".
6. Turn the steering wheel full lock to the right then repeat step 5 listed above.
7. To check your adjustments are correct, turn the steering wheel to either lock, noting stops "A" and "B" make contact at the same moment. This will ensure the smallest turning circle without unnecessary strain on the steering component.
8. Replace spark plug lead.

Illustration K



Park Brake Adjustment

Check effectiveness of the parking brake by its ability to stop the tractor mower by applying the brake to the "IN" position while it is rolling forward with the foot pedal in the neutral position.

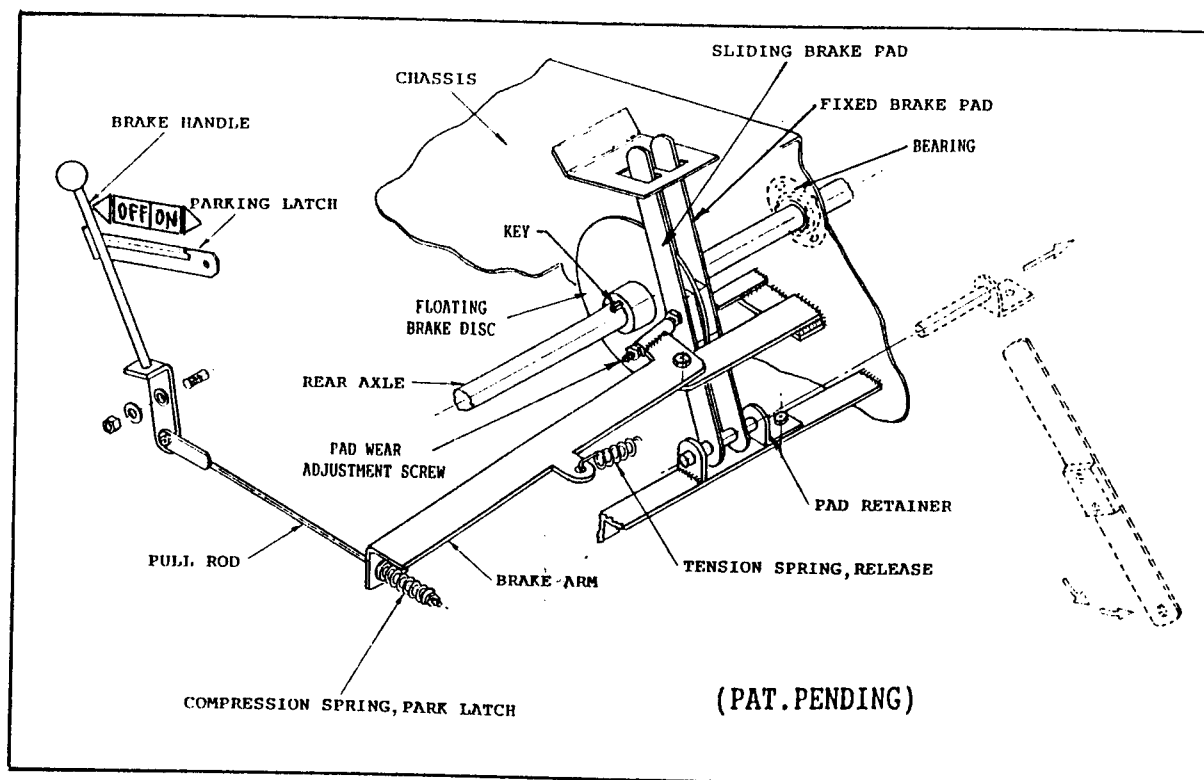
BRAKE PAD WEAR ADJUSTMENT

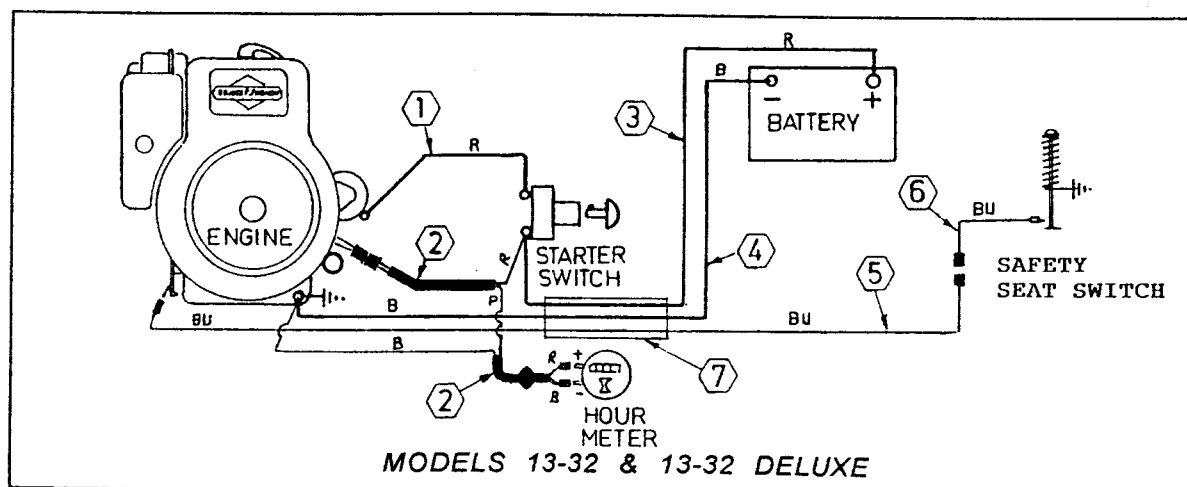
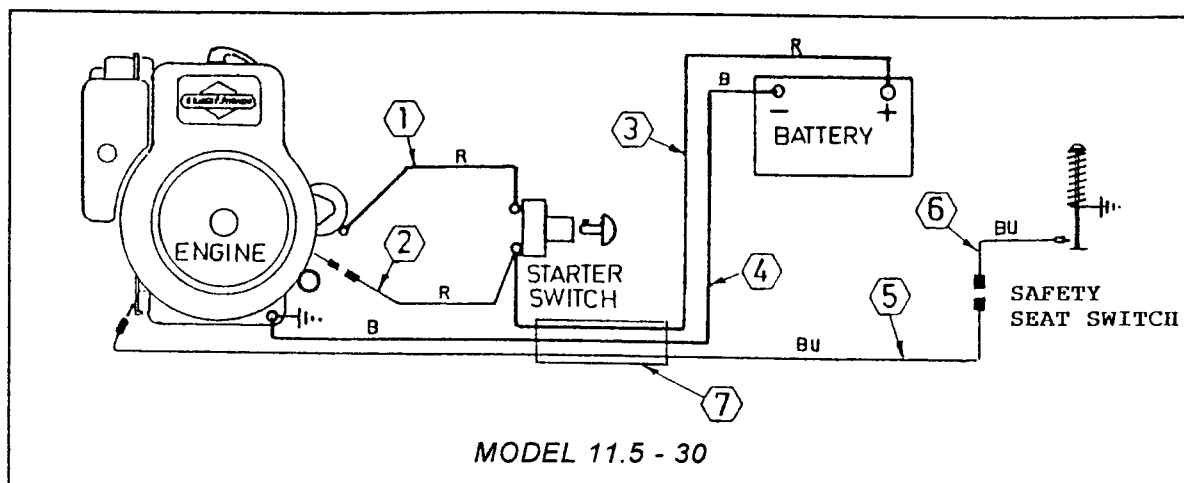
The adjusting screw is located on the brake arm and bears against the sliding brake pad. As the brake pads wear, the brake disc is free to slide along the axle against the fixed pad. This adjusting screw compensates for wear on both pads and at times will need to be adjusted as described below.

- (A) Remove the spark plug lead to prevent accidental starting.
- (B) Place the brake handle in the "OFF" position.
- (C) Loosen the locknut and screw out the adjusting screw until both pads are just lightly touching the brake disc and not binding
- (D) Tighten locknut while holding adjusting screw stationary.
- (E) Check that the brake disc rotates freely between the pads and replace the spark plug lead.

PAD REPLACEMENT

- (A) Remove the spark plug lead to prevent accidental starting.
- (B) Remove the pad retainer.
- (C) Remove both brake pads.
- (D) Loosen the locknut on the adjusting screw and screw in the adjusting screw. The new pads will be thicker.
- (E) Fit the two new brake pads.
- (F) Refit the pad retainer.
- (G) Re adjust the adjusting screw following steps "A" to "E" of "PARK BRAKE ADJUSTMENT". See illustration "L"
- (H) Oil all pivots, **DO NOT OIL BRAKE PADS OR DISC**





INDEX	PART No.	DESCRIPTION
1.	GT 18021	Red Cable - Starter Switch to Starter Motor
2.	GT 18023	Red wire - Charging Wire 11.5 - 30
2.	GT 12067	Wire Harness - Charging & Hour Meter Model 13-32 and 13-32 DELUXE
3.	GT 6136	Red Cable - Battery Positive to Starter Switch
4.	GT 10473	Black Cable - Battery Negative to Engine Base
5.	GT 12061	Blue Wire - Seat Switch to Engine
6.	GT 12066	Blue Wire - Seat Switch
7.	GT 14373	Black Spaghetti Tube

STARTER SWITCH SHOWN IS THE PUSH BUTTON TYPE.
A KEY SWITCH COULD ALSO BE FITTED WITH A STARTER SOLENOID.

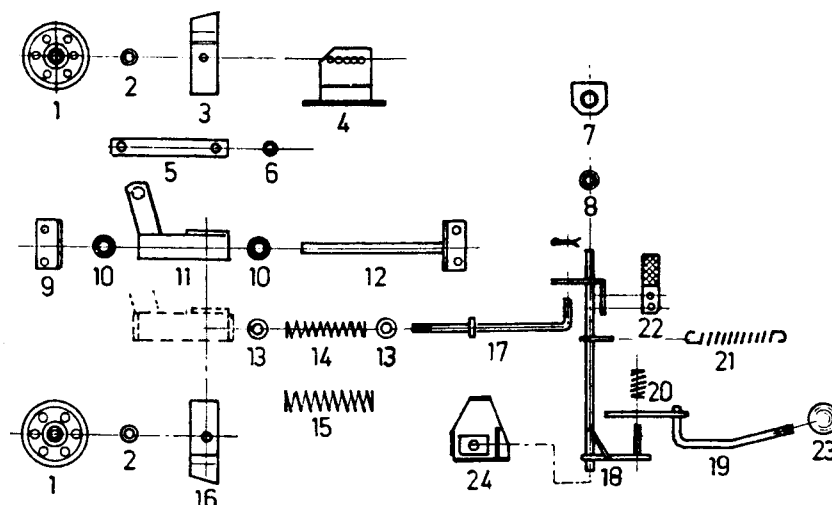
PARTS AND SPECIFICATIONS SUBJECT TO CHANGE WITHOUT NOTICE.

COLOUR LEGEND

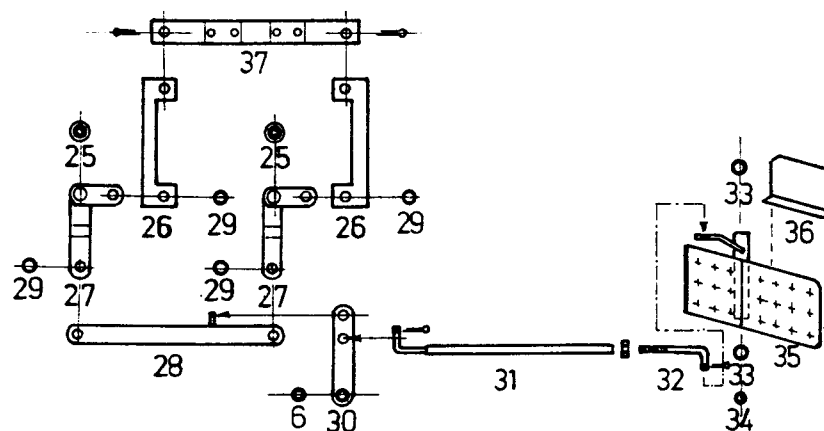
B	-	BLACK
P	-	PURPLE
R	-	RED
BU	-	BLUE

Linkages

CUTTER CLUTCH



DRIVE CLUTCH

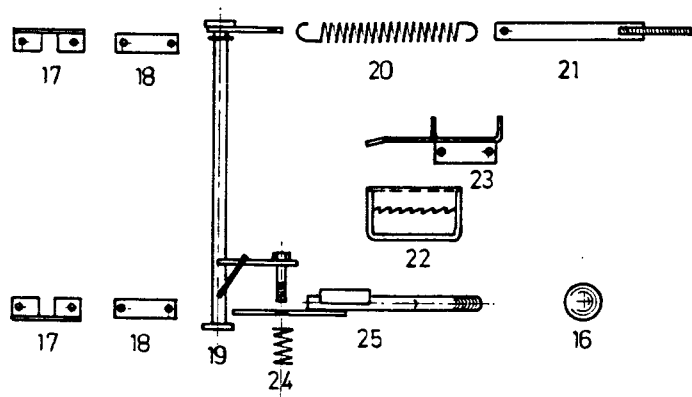
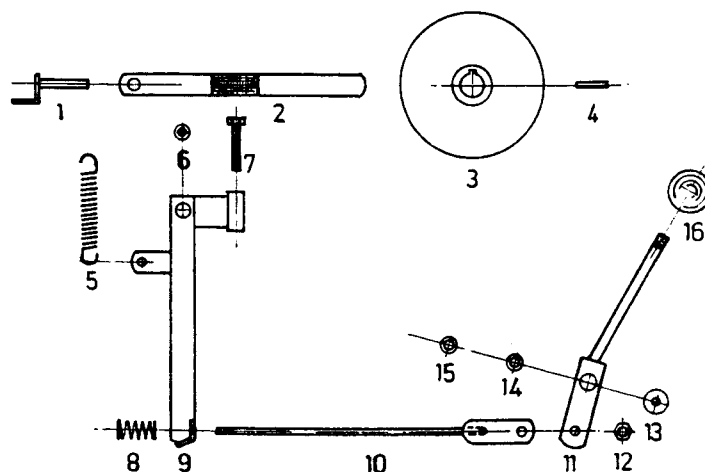


INDEX	PART NO.	DESCRIPTION	INDEX	PART NO.	DESCRIPTION
1.	GT 6901	V Pulley & Bearing Complete	19.	GT 18905	Handle
2.	GT 6018	Bearing Adaptor	20.	GT 7071	Spring - Compression
3.	GT 13790	L.H. Belt Guide	21.	GT 9090	Spring - Tension
4.	GT 18855	Fixed Pulley Brakcet 30" Model	22.	GT 13801	Cutter Brake Pad Unit
4.	GT 18740	Fixed Pulley Bracket 32" Model	23.	GT 1565	Knob
5.	GT 14318	Bar (2 Required)	24.	GT 12990	Latch - Cutter Clutch
6.	GT 730	Bush	25.	GT 18042	Pivot Bush
7.	GT 12305	Bracket	26.	GT 14309	Clutch Link
8.	GD 5525	Bush	27.	GT 18780	Pivot Arm
9.	GT 13776	Bracket	28.	GT 18785	F - R Link
10.	GT 12394	Bush	29.	GT 2057	Retainer
11.	GT 13780	Sliding Bracket 30" Model	30.	GT 18318	Link
11.	GT 18910	Sliding Bracket 32" Model	31.	GT 18950	Control Tube
12.	GT 13775	Rail Assembly	32.	GT 8227	Adjusting Link
13.	GT 585	Cup	33.	GT 12394	Bush
14.	GT 12105	Spring Inner	34.	GT 580	Retainer
15.	GT 14024	Spring Outer	35.	GT 18945	F - R Foot Pedal
16.	GT 13785	R.H. Belt Guide	36.	GT 18328	Heat Shield
17.	GT 13770	Clutch Rod	37.	GT 13883	Yoke Unit
18.	GT 13370	Clutch Shaft Assembly			

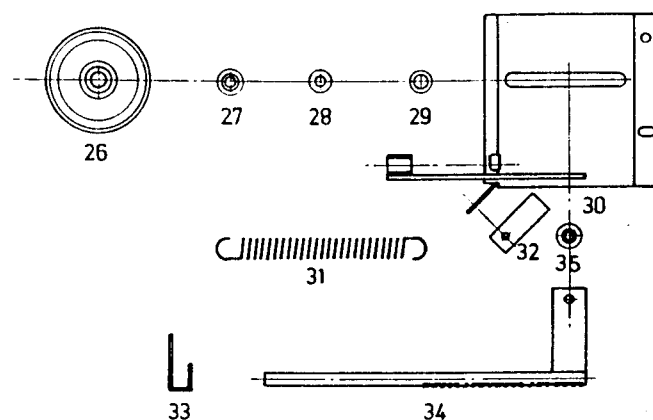
PARTS AND SPECIFICATIONS SUBJECT TO CHANGE WITHOUT NOTICE.
STANDARD HARDWARE ITEMS ARE NOT SHOWN.

Linkages

PARK EMERGENCY BRAKE



CUTTER HEIGHT



NOTCH BAR

INDEX PART NO. DESCRIPTION

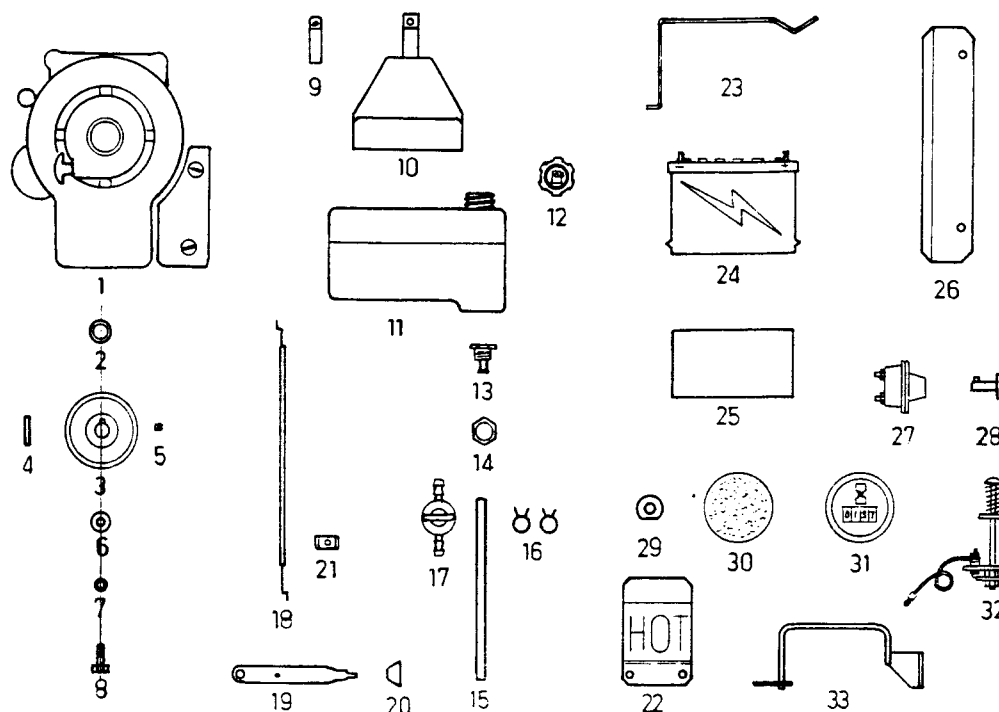
1.	GT 15270	Anchor - Brake Pads
2.	GT 19805	Brake Pad Unit
3.	GT 18660	Brake Disc
4.	GT 12093	Key
5.	GT 6064	Spring - Tension
6.	GT 1851	Pivot Bush
7.	GT 1137	Adjusting Screw
8.	GT 18048	Spring - Compression
9.	GT 18830	Brake Arm
10.	GT 18805	Brake Rod
11.	GT 18810	Brake Handle
12.	GT 2466	Nyloc Nut
13.	GT 579	Wave Washer
14.	GT 730	Pivot Bush
15.	GT 14341	Washer
16.	GT 1565	Knob
17.	GT 18313	Pivot Bracket
18.	GT 18314	Packer

INDEX PART NO. DESCRIPTION

19.	GT 18820	Height Adjust Shaft
20.	GT 6030	Spring Tension
21.	GT 18775	Tensioner
22.	GT 18815	Height Adjust Rack
23.	GT 18315	Rack Support
24.	GT 7071	Spring - Compression
25.	GT 18705	Handle
26.	GT 7965	Vee Pulley Complete
27.	GT 610	Bearing Adaptor
28.	GT 579	Wave Washer
29.	GT 18322	Washer
30.	GT 18760	Bracket
31.	GT 1554	Spring - Tension
32.	GT 14023	Leaf Spring
33.	GT 7308	Anchor - Spring
34.	GT 18765	Notch Bar
35.	GT 608	Slide Bush

PARTS AND SPECIFICATIONS SUBJECT TO CHANGE WITHOUT NOTICE.
STANDARD HARDWARE ITEMS ARE NOT SHOWN.

Engine & Electrical

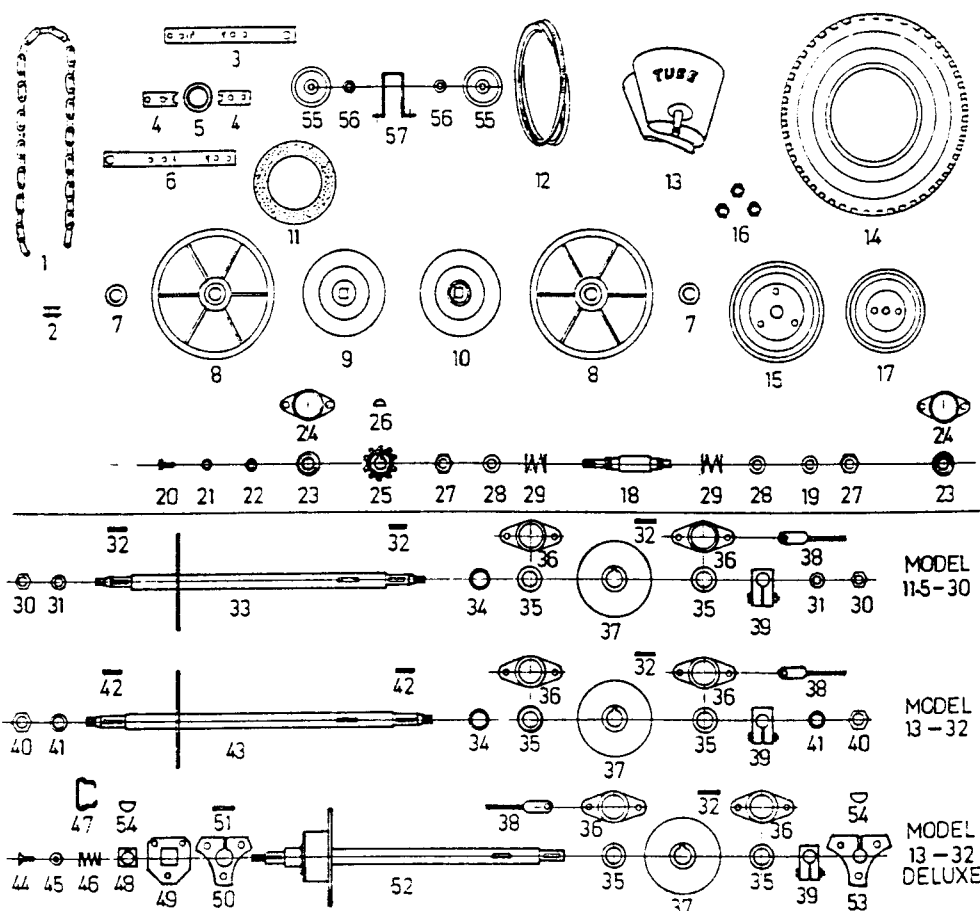


INDEX	PART NO.	DESCRIPTION	INDEX	PART NO.	DESCRIPTION
1.	11.5 HP Briggs & Stratton Model 11.5-30		17.	GT 2215	Fuel Tap - When Fitted
1.	13 HP Briggs & Stratton Models 13-32		18.	GT 13804	Throttle Cable
2.	GT 18047	Spacer - Crankshaft	19.	GT 12353	Throttle Lever
3.	GT 18004	Pulley - Engine	20.	GT 2025	Throttle Knob
4.	GT 14037	Key	21.	GT 1252	Cable Clamp
5.	GT 520	Grub Screw	22.	GT 18302	Heat Shield - Muffler
6.	GT 1750	Washer	23.	GT 14350	Battery Clamp
7.	GT 2021	Spring Washer	24.	GT 1914	Battery
8.	GT 1069	Bolt	25.	GT 14336	Rubber Mat - Battery
9.	GT 14323	Clamp - Fuel Tank	26.	GT 18321	Support - Electric Harness
10.	GT 18870	Fuel Tank Support	27.	GT 1915	Starter Switch
11.	GT 14001	Fuel Tank - Bare	28.	GT 1995	Starter Button
12.	GT 6031	Cap - Fuel Tank	29.	GT 12345	Insulator - Positive Pole
13.	GT 10043	Hose Tail	30.	GT 2223	Blank Grommet 11.5-30
14.	GT 10044	Nut	31.	GT 6084	Hour Meter *
15.	GT 12343	Fuel Hose	32.	GT 13831	Seat Safety Switch Unit
16.	GT 2024	Hose Clip	33.	GT 18885	Belt Guide - Engine Pulley

* USED ON 13HP ENIGNES ONLY

PARTS AND SPECIFICATIONS SUBJECT TO CHANGE WITHOUT NOTICE.
STANDARD HARDWARE ITEMS ARE NOT SHOWN.

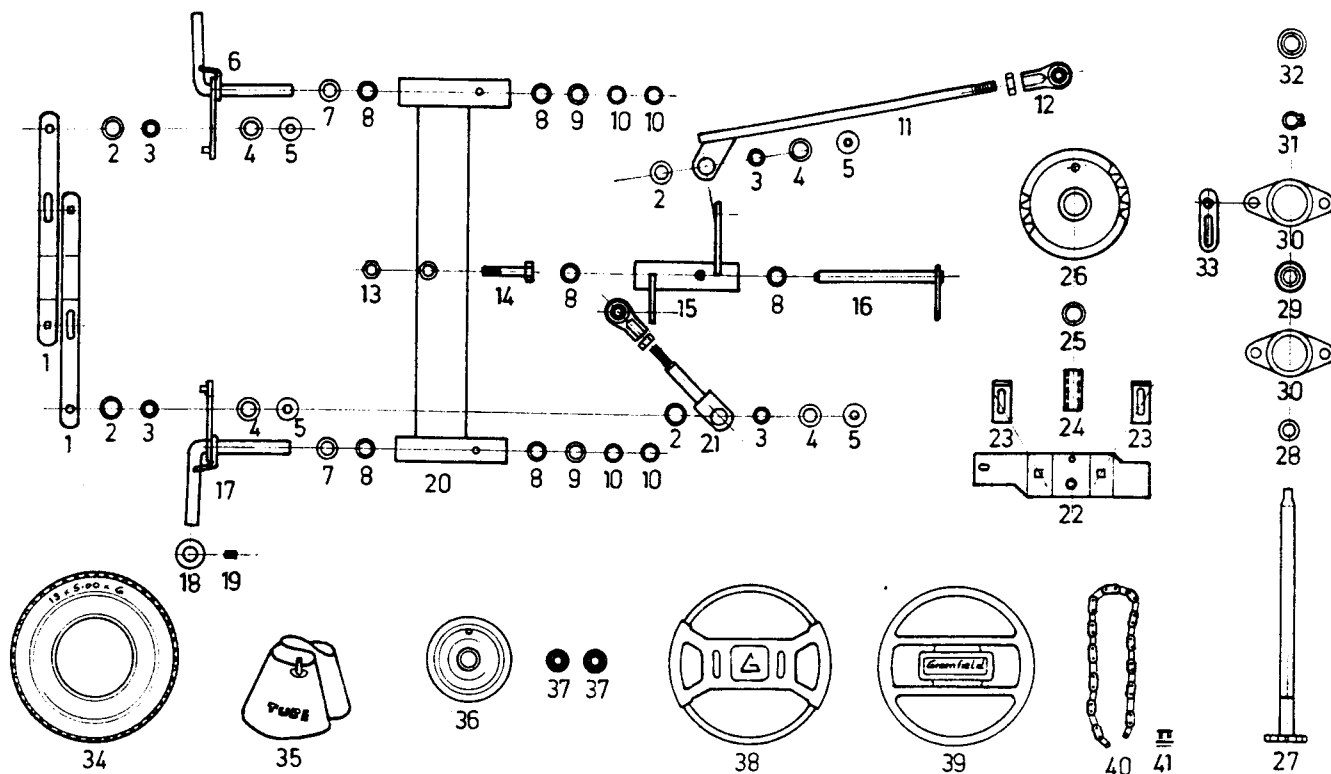
Drive Clutch & Rear Axle



INDEX	PART NO.	DESCRIPTION	INDEX	PART NO.	DESCRIPTION
1.	GT 18006	Roller Chain	27.	GT 347	Nut
2.	GT 501	Connecting Link	28.	GT 7303	Washer
3.	GT 10620	Yoke Top Half	29.	GT 357	Spring
4.	GT 12364	Retainer	30.	GT 178	Nut
5.	GT 855	Bearing Clutch Plate	31.	GT 22	Washer
6.	GT 10630	Yoke Bottom Half	32.	GT 12093	Key
7.	GT 2206	Bearing Clutch Pulley	33.	GT 18035	Rear Axle & Sprocket Model 11.5-30
8.	GT 920	Clutch Pulley Complete	34.	GT 18310	Spacer
9.	GT 6855	L.H. Drive Plate (Reverse)	35.	GT 390	Bearing
10.	GT 6856	R.H. Drive Plate (Forward)	36.	GT 7083	Flangette Plate
11.	GT 6012	Clutch Lining	37.	GT 18660	Brake Disc
12.	GT 14004	V Belt - Drive	38.	GT 18865	Chain Adjuster
13.	GT 1341	Tube Model 11.5-30	39.	GT 7032	Clamp
13.	GT 10002	Tube Model 13-32 Standard	40.	GT 1017	Nut
13.	GT 1535	Tube Model 13-32 Deluxe	41.	GT 2477	Washer
14.	GT 1340	Tyre Model 11.5-30	42.	GT 4121	Key
14.	GT 10001	Tyre Model 13-32 Standard	43.	GT 18040	Rear Axle & Sprocket Model 13-32 Standard
14.	GT 1203	Tyre Model 13-32 Deluxe	44.	GT 2425	Screw
15.	GT 1624	Wheel Hub 13-32 Deluxe R.H.	45.	GT 10488	Spring Retainer
15.	GT 2929	Wheel Hub 13-32 Deluxe L.H.	46.	GT 2958	Spring
16.	GT 2011	Wheel Nut Model 13-32 Deluxe	47.	GT 2957	Handle
17.	GT 410	Wheel Hub Model 11.5-30	48.	GT 2956	Engagement Block
17.	GT 2240	Wheel Hub Model 13-32 STD	49.	GT 2955	Engagement Plate
18.	GT 18031	Drive Shaft	50.	GT 2954	Wheel Flange (Differential Side)
19.	GT 539	Shim .010"	51.	GT 2995	Key
20.	GT 1455	Set Screw	52.	GT 2850	Rear Axle And Differential 13-32 Deluxe
21.	GT 2052	Spring Washer	53.	GT 1625	Wheel Flange
22.	GT 7306	Washer	54.	GT 516	Key
23.	GT 392	Bearing - Drive Shaft	55.	GT 1009	Pulley - Flat Idler
24.	GT 7017	Flangette Plate	56.	GT 18050	Bearing Adaptor
25.	GT 12111	11 Tooth Sprocket	57.	GT 18312	Bracket
26.	GT 517	Key			

PARTS AND SPECIFICATIONS SUBJECT TO CHANGE WITHOUT NOTICE.
STANDARD HARDWARE ITEMS ARE NOT SHOWN.

Steering & Front Axle



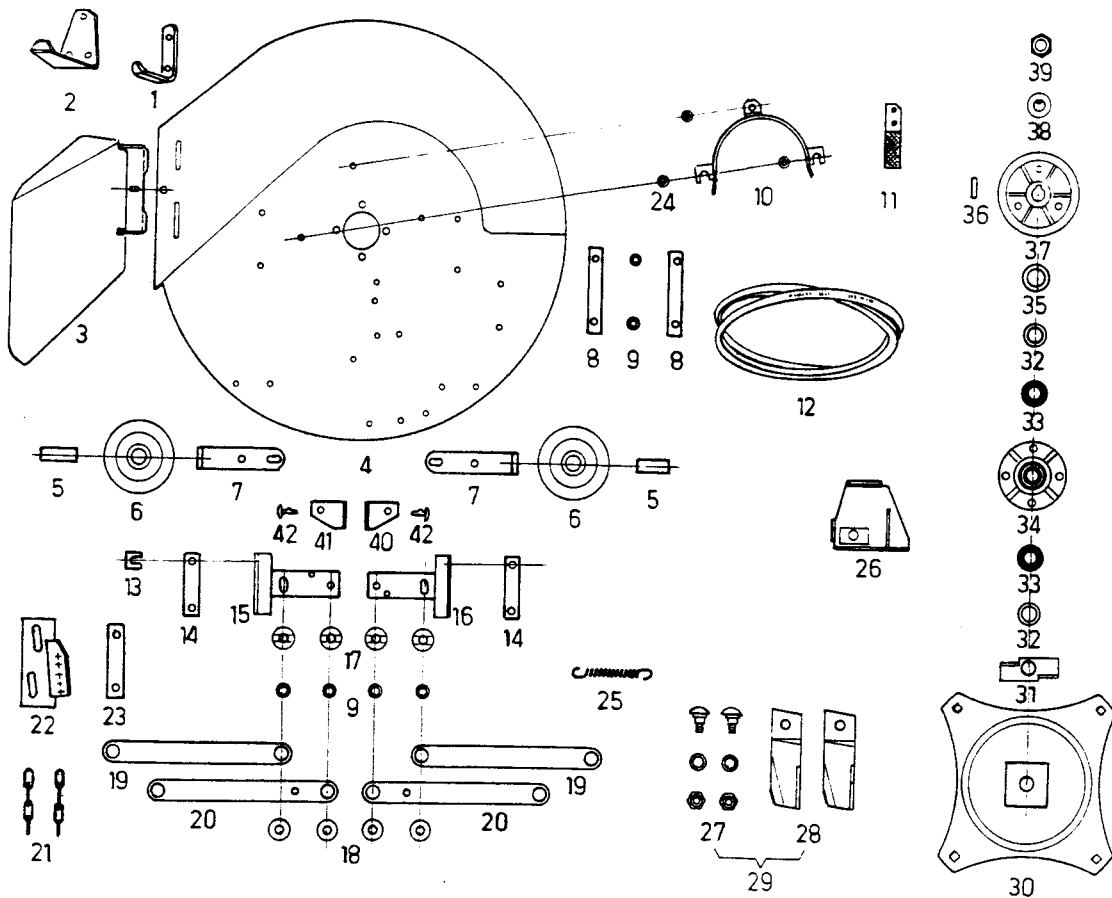
INDEX PART NO. DESCRIPTION

INDEX PART NO. DESCRIPTION

1.	GT 18323	Tie Rod	26.	GT 13265	Chain Wheel
2.	GT 10038	Nylon Washer	27.	GT 18880	Steering Shaft
3.	GT 10037	Pivot Bush	28.	GT 18037	Spacer
4.	GT 534	Felt Seal	29.	GT 7010	Bearing
5.	GT 10488	Cup	30.	GT 7017	Flangette Plate
6.	GT 18920	R.H. King Pin	31.	GT 2470	Circlip
7.	GT 2018	Washer	32.	GT 1766	Bush
8.	GT 12394	Bush	33.	GT 18324	Locking Tab
9.	GT 7304	Washer	34.	GT 1635	Tyre Model 11.5-30
10.	GT 580	Retainer	34.	GT 455	Tyre Model 13-32 Standard
11.	GT 18940	Steering Link	34.	GT 455	Tyre Model 13-32 Deluxe
12.	GT 1626	Tie Rod End	35.	GT 1454	Tube Model 11.5-30
13.	GT 195	Nut	35.	GT 456	Tube Model 13-32 Standard
14.	GT 2476	Bolt	35.	GT 456	Tube Model 13-32 Deluxe
15.	GT 18930	Steering Crank	36.	GT 7093	Wheel Hub Model 11.5-30
16.	GT 18645	Pivot Pin	36.	GT 7007	Wheel Hub Model 13-32 Standard
17.	GT 18925	L.H. King Pin	36.	GT 7007	Wheel Hub Model 13-32 Deluxe
18.	GT 7009	Collar	37.	GT 2202	Bearing - Wheel Hub Model 11.5-30
19.	GT 520	Grub Screw	37.	GT 396	Bearing - Wheel Hub Models 13-32
20.	GT 18750	Front Axle Beam	38.	GT 1785	Steering Wheel Comp. Model 11.5-30
21.	GT 18935	Drag Link	38.	GT 1785	Steering Wheel Comp. Model 13-32 STD
22.	GT 18316	Support	39.	GT 2212	Steering Wheel Comp. Model 13-32 DLX
23.	GT 18317	Stops - Adjustable	40.	GT 12043	Roller Chain
24.	GT 12110	Sleeve	41.	GT 504	Connecting Link
25.	GT 12407	Bush			

PARTS AND SPECIFICATIONS SUBJECT TO CHANGE WITHOUT NOTICE.

STANDARD HARDWARE ITEMS ARE NOT SHOWN.

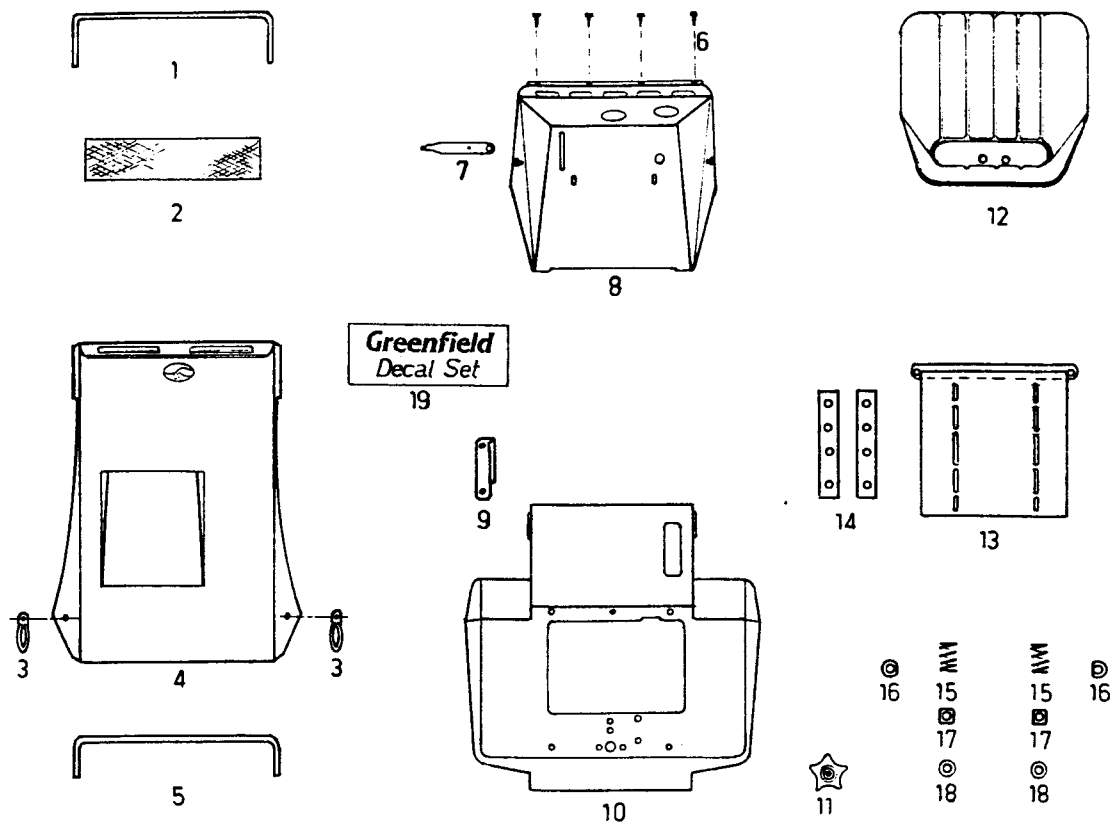


INDEX	PART NO.	DESCRIPTION	INDEX	PART NO.	DESCRIPTION
1.	GT 12363	Deck Skid 30" Model	20.	GT 18835	Top Link 30" Model
2.	GT 14392	Deck Skid 32" Model	20.	GT 18840	Top Link 32" Model
3.	GT 15135	Stone Guard	21.	GT 12346	Lifting Chain
4.	GT 12384	Cutter Deck 30" Model	22.	GT 18855	Fixed Bracket 30" Model
4.	GT 18332	Cutter Deck 32" Model	22.	GT 18740	Fixed Bracket 32" Model
5.	GT 8501	Bush	23.	GT 13280	Bolt Retainer
6.	GT 12010	Jockey Wheel	24.	GT 18325	Spacer
7.	GT 12362	Bracket	25.	GT 9090	Spring - Tension
8.	GT 14318	Bar	26.	GT 12990	Latch - Cutter Clutch
9.	GT 730	Bush	27.	GT 2110	Blade Bolt Set
10.	GT 13210	Belt Guard	28.	GT 2138	Blade Set
11.	GT 13801	Cutter Brake	29.	GT 2139	Blade and Bolt Set
12.	GT 18005	V Belt - Cutters	30.	GT 13005	Disc & Spindle 30" Model
13.	GT 10463	Shim (East - West Levelling)	30.	GT 18895	Disc & Spindle 32" Model
14.	GT 13285	Bolt Retainer	31.	GT 8205	Bearing Wiper
15.	GT 18850	L.H. Side Plate 30" Model	32.	GT 635	Spacer
15.	GT 18955	L.H. Side Plate 32" STD	33.	GT 589	Shield
15.	GT 18745	L.H. Side Plate 32" DLX	34.	GT 13815	Spindle Housing Unit Complete
16.	GT 18850	R.H. Side Plate 30" Model	35.	GT 18046	Spacer 32" Model Only
16.	GT 18955	R.H. Side Plate 32" STD	36.	GT 14047	Key
16.	GT 18745	R.H. Side Plate 32" DLX	37.	GT 14044	Pulley
17.	GT 579	Wave Washer	38.	GT 14390	Tab Washer
18.	GT 1012	Washer	39.	GT 2471	Nut M20 L.H.
19.	GT 18320	Bottom Link 30" Model (Bent)	40.	GT 7115	R.H. Bracket
19.	GT 18333	Bottom Link 32" STD (Bent)	41.	GT 7114	L.H. Bracket
19.	GT 7406	Bottom Link 32" DLX (Shown)	42.	GT 1760	Button

PARTS AND SPECIFICATIONS SUBJECT TO CHANGE WITHOUT NOTICE.

STANDARD HARDWARE ITEMS ARE NOT SHOWN

Body Work & Seat



INDEX	PART NO.	DESCRIPTION	INDEX	PART NO.	DESCRIPTION
1.	GT 18326	Pinch weld Front	12.	GT 8060	Seat Model 11.5-30
2.	GT 12379	Grille	12.	GT 8063	Seat Model 13-32 Standard
3.	GT 7015	Strap - Bonnet hold down	12.	GT 8064	Seat Model 13-32 Deluxe
4.	GT 18685	Bonnet Model 11.5 - 30	13.	GT 13480	Hinged Seat Base
4.	GT 18685	Bonnet Model 13-32 Standard	14.	GT 10508	Packing Strip
4.	GT 18915	Bonnet Model 13-32 Deluxe	15.	GT 14050	Spring
5.	GT 18327	Pinch weld Rear	16.	GT 10452	Clamp
6.	GT 6094	Buffer Grommet	17.	GT 10451	Locating Block
7.	GT 12353	Throttle Lever	18.	GT 1660	Washer
8.	GT 18680	Steering Cowl	19.	GT 18063	Decal Set Model 11.5-30
9.	GT 18311	Latch - Park Brake	19.	GT 18062	Decal Set Model 13-32 Standard
10.	GT 18670	Rear Cover	19.	GT 18061	Decal Set Model 13-32 Deluxe
11.	GT 13807	Knob - Rear Cover			

NOTE BODY PANELS ARE BARE ITEMS PAINTED WITH DECALS.

PARTS AND SPECIFICATIONS SUBJECT TO CHANGE WITHOUT NOTICE.

STANDARD HARDWARE ITEMS ARE NOT SHOWN.

GUARANTEE

Greenfield Products Pty Ltd the manufacturer guarantee their product free of faulty workmanship and material for a period of 12 months for domestic use, 3 months for commercial use. Engines and batteries used on Greenfield mowers carry the respective manufacturers warranty.

For details of the special Greenfield 3 year extended warranty plan ask your Greenfield Dealer.

This Guarantee will not apply to:

- * Fair wear and tear, V Belts, Tyres, Tubes, Blades and Blade Bolts, blade holder, and damage caused by misuse, neglect and accidents.
- * Repairs rendered necessary or arising from use of other than genuine Greenfield parts, or the relevant genuine engine manufacturers parts.
- * Any work performed by other than an authorised Greenfield dealer, or damages arising therefrom or parts that have been tampered with or dismantled.

Products or parts considered faulty should be returned intact to the authorised Greenfield dealer, or direct to Greenfield with all necessary information, freight paid for inspection. In all warranty claims the manufacturers decision is final and binding.

The benefits conferred by the above guarantee are in addition to all other rights and remedies in respect of the product which the consumer has under existing laws in Australia and New Zealand.

Greenfield Products Pty Ltd, the manufacturer reserves the right to change parts and specifications without notice.

Guarantee Registration Details

Owner _____

Address _____

_____ Postcode _____

Purchase Date _____ Model _____

Chassis No. _____ Engine No. _____

Dealer Name _____

Dealer Signature _____

Please complete this record which should be held by the purchaser and presented should service under guarantee be required. To register your guarantee please complete the enclosed guarantee card and return to Greenfield Products.

Greenfield Products Pty Ltd
172 Ingram Rd, Acacia Ridge, Qld 4110
P.O. Box 155 Archerfield Qld Australia 4108
Fax (07)344 1161 Phone (07)345 6100